



CATALOG NO. 496-2087

EDITION 2018



# **AUTOMOTIVE MASTER CATALOGUE**

**DRIVING INNOVATION, COLLABORATION  
AND EXCELLENCE TO IMPROVE QUALITY  
AND INCREASE EFFICIENCY**



# THE PARTS WORLD AT YOUR FINGERTIPS

[WWW.GATESCATALOGUE.COM.AU](http://WWW.GATESCATALOGUE.COM.AU)



DRIVEN BY POSSIBILITY



## CATALOGUE SEARCH

FIND PARTS FOR YOUR VEHICLE

SEARCH MAKE, MODEL OR PART NUMBER...

3 WAYS TO SEARCH



Catalogue Search

Gates Automotive catalogue to find quality Motorcraft replacement parts.



FOLLOW US:  
GATES AUSTRALIA



DRIVEN BY POSSIBILITY™



# TABLE OF CONTENTS

<b>MISSION - CRITICAL POWER TRANSMISSION &amp; FLUID POWER SOLUTIONS</b> .....	<b>4</b>	<b>INDUSTRIAL BELTS</b> .....	<b>18 - 19</b>	FIREWALL™ HEATER HOSE .....	38
<b>TIMING BELT SYSTEM</b> .....	<b>5 - 6</b>	SUPER HC™ AND SUPER HC™ MOULDED NOTCH V-BELTS .....	18	SAFETY STRIPE™ HEATER HOSE .....	38
AUTOMOTIVE TIMING BELTS .....	5	INDUSTRIAL MICRO-V® BELTS (J, L AND M SERIES) .....	18	POLYBAGGED SAFETY STRIPE™ HEATER HOSE .....	39
TIMING COMPONENT KITS .....	5	SUPER HC™ AND SUPER HC™ MOULDED NOTCH POWERBAND™ V-BELTS .....	18	CHARTER™ HEATER HOSE .....	39
TIMING BELT COMPONENT KITS WITH WATER PUMP .....	6	TRI-POWER™ BELTS .....	19	HEATER VALVES .....	39
HYDRAULIC TENSIONERS .....	6	HI-POWER™ II BELTS .....	19	HEATER VALVE & HOSE ASSEMBLIES .....	40
POWERGRIP™ INDIVIDUAL TIMING COMPONENTS .....	6	<b>LAWN &amp; GARDEN BELTS</b> .....	<b>20 - 21</b>	SILICONE HEATER HOSE .....	40
RACING PERFORMANCE TIMING BELTS .....	6	BLADERUNNER™ BELTS .....	20	GREEN STRIPE™ HEATER HOSE .....	41
<b>ACCESSORY BELT DRIVE SYSTEM</b> .....	<b>7 - 11</b>	POWERATED™ V-BELTS .....	20	ELECTRIC HEATER VALVES .....	41
MICRO-V® COMPONENT KITS .....	7	TRUFLEX™ V-BELTS .....	21	<b>COOLANT SYSTEM - COMPONENTS</b> .....	<b>42 - 44</b>
MICRO-V® BELTS .....	7	<b>COOLANT SYSTEM - WATER PUMPS</b> .....	<b>22</b>	HOSE I.D. REDUCERS .....	42
MICRO-V® AT™ EMD BELTS .....	7	WATER PUMPS .....	22	HEATER HOSE QUICK-LOK™ CONNECTORS .....	42
MICRO-V® DUAL-SIDED BELTS .....	8	WATER PUMPS WITH BACK HOUSINGS .....	22	PLASTIC HEATER HOSE AND FUEL LINE CONNECTORS .....	43
STRETCH FIT™ BELTS .....	8	ELECTRIC WATER PUMPS .....	22	CLAMP SELECTION GUIDE .....	44
RPM MICRO-V® BELTS .....	8	WATER PUMPS - HEAVY-DUTY APPLICATIONS .....	22	<b>HOSE CLAMPS AUTOMOTIVE</b> .....	<b>45 - 46</b>
XL™ V-BELTS .....	9	<b>COOLANT SYSTEM - HOSE</b> .....	<b>24 - 36</b>	SMALL DIAMETER CLAMPS .....	45
DRIVEALIGN™ AUTOMATIC BELT TENSIONERS .....	10	MOULDED COOLANT HOSE .....	24	FUEL INJECTION CLAMPS .....	45
DRIVEALIGN™ IDLER PULLEYS .....	10	MODULAR RADIATOR HOSE .....	25	1/2" BAND CLAMPS .....	46
ALTERNATOR DECOUPLER PULLEYS (ADP) .....	10	SMALL INSIDE DIAMETER MOULDED COOLANT HOSE .....	26	<b>HOSE CLAMPS AUTOMOTIVE &amp; INDUSTRIAL</b> .....	<b>47 - 48</b>
DRIVEALIGN™ TORSIONAL VIBRATION DAMPER .....	11	MULTI-FIT COOLANT HOSE .....	26	NON-PERFORATED BAND CLAMPS .....	47
EUROGRIP™ OE DRIVE COUPLERS .....	11	EMERGENCY 4WD KIT .....	26	POWERGRIP™ SB CLAMPS (SHRINKBAND CLAMPS) .....	48
FAN PULLEY BRACKETS .....	11	COOLANT HOSE PACKS .....	26	<b>HOSE CLAMPS HEAVY-DUTY</b> .....	<b>49</b>
<b>HEAVY - DUTY BELT DRIVE SYSTEM</b> .....	<b>12 - 15</b>	VULCO-FLEX™ II COOLANT HOSE .....	27	LINED CLAMPS .....	49
FLEETRANNER™ HEAVY-DUTY V-BELTS .....	12	VULCO STRAIGHT COOLANT HOSE .....	28	<b>HOSE CLAMPS HEAVY-DUTY</b> .....	<b>50 - 52</b>
GREEN STRIPE™ XL™ V-BELTS .....	12	90° MOULDED COOLANT HOSE .....	29	T-BOLTS .....	50 - 52
GREEN STRIPE™ TRUCK AND BUS SERIES V-BELTS .....	12	GREEN STRIPE™ 2-PLY STRAIGHT COOLANT HOSE .....	30	HIGH PERFORMANCE WORM DRIVE CLAMPS .....	52
GREEN STRIPE™ POWERBAND™ BELTS .....	13	GREEN STRIPE™ 4-PLY COOLANT HOSE .....	31	<b>HOSE CLAMPS HEAVY-DUTY CONSTANT TENSION</b> .....	<b>53</b>
TRU-POWER™ V-BELTS .....	13	GREEN STRIPE™ VULCO-FLEX™ COOLANT HOSE .....	32	FLEX-GEAR™ CLAMPS .....	53
FLEETRANNER™ MICRO-V® BELTS .....	13	WIRE-INSERTED GREEN STRIPE™ COOLANT HOSE .....	33	<b>HOSE CLAMPS SPECIALTY</b> .....	<b>54</b>
EXTRA SERVICE MICRO-V® XF™ BELTS .....	14	GREEN STRIPE™ VIBRAFLEX™ COOLANT HOSE .....	34	QUICK RELEASE CLAMPS .....	54
GREEN STRIPE™ MICRO-V® BELTS .....	14	SILICONE COOLANT HOSE .....	35	<b>HOSE CLAMPS RETAIL PACKS</b> .....	<b>55</b>
DRIVEALIGN™ HEAVY-DUTY IDLER PULLEYS .....	14	SEVERE SERVICE SILICONE COOLANT HOSE .....	36	CARDED CLAMPS .....	55
DRIVEALIGN™ HEAVY-DUTY AUTOMATIC BELT TENSIONERS .....	15	<b>HEATER HOSE</b> .....	<b>37 - 41</b>	IDEAL HANDY PACKS .....	55
BUS BELT TENSIONER .....	15	90°C MOULDED HEATER HOSE .....	37	<b>HOSE CLAMPS GRAB PACKS</b> .....	<b>56</b>
<b>POWER SPORT RECREATIONAL BELTS</b> .....	<b>16</b>	MOULDED HEATER HOSE .....	37	FUEL LINE HOSE CLAMP GRAB PACK .....	56
G-FORCE™ CVT BELTS .....	16	<b>HOSE CLAMPS SPECIALTY</b> .....	<b>54</b>	CLAMP & HOSE CONNECTOR GRAB PACK .....	56
POWERLINK™ BELTS .....	16	QUICK RELEASE CLAMPS .....	54	FLEXIBLE HOSE CLAMP DRIVERS .....	56



<b>COOLANT SYSTEM - THERMOSTATS</b>	<b>57 - 59</b>	<b>BRAKING SYSTEM</b>	<b>74 - 80</b>	HOSE HANGERS	93
GATES CONVENTIONAL WAX THERMOSTATS	57	AIR BRAKE HOSE ASSEMBLIES	74	FUEL AND VACUUM HOSE MERCHANDISER	94
INTEGRATED THERMOSTAT HOUSINGS	57	BRAKE LINE ABRASION SHIELDS	75	EFI & VACUUM HOSE MERCHANDISER	94
COOLANT OUTLETS	58	AB SERIES AIR BRAKE HOSE	76	HEATER HOSE MERCHANDISER	94
GREEN STRIPE™ HEAVY-DUTY THERMOSTATS	58	GREEN STRIPE™ VACUUM BRAKE HOSE	76	CURVED HOSE RACKING	95
GREEN STRIPE™ HEAVY-DUTY THERMOSTAT SEALS	59	POWER BRAKE VACUUM HOSE	77	BELT RACKING - DK12	95
GATES LOW TEMPERATURE THERMOSTATS	59	HEAVY-DUTY GREEN STRIPE™ AIR BRAKE HOSE	77	BELT RACKING (TIERED)	95
<b>COOLANT SYSTEM RADIATOR PRESSURE CAPS</b>	<b>60</b>	NYLON AIR BRAKE TUBING	78	SILICONE COOLANT HOSE MERCHANDISER	96
<b>COOLANT SYSTEM RACING RADIATOR CAPS</b>	<b>61</b>	SURELOK™ FITTINGS	79	V-BELT AND MICRO-V® BELT MERCHANDISER	97
<b>COOLANT SYSTEM H.D. RADIATOR CAPS</b>	<b>62</b>	SMALL AIR BRAKE ASSORTMENT	79	VULCO-FLEX™ MERCHANDISER	97
<b>FUEL SYSTEM - HOSE</b>	<b>63 - 68</b>	LARGE AIR BRAKE ASSORTMENT	79	GREEN STRIPE™ VULCO-FLEX™ COOLANT HOSE MERCHANDISER	98
BARRICADE™ FUEL INJECTION HOSE (MPI)	63	COMPRESSION FITTINGS	80	HOSE CLAMPS MERCHANDISER 57 SERIES	99
BARRICADE™ CARBURETION FUEL LINE HOSE	64	SMALL COMPRESSION ASSORTMENT	80	HOSE CLAMPS MERCHANDISER 67 SERIES	99
BARRICADE™ MARINE FUEL HOSE	64	LARGE COMPRESSION ASSORTMENT	80	T-BOLT CLAMPS MERCHANDISER 32 SERIES	100
SAFETY STRIPE™ II RETURN FUEL LINE/PCV/EVAPORATIVE EMISSION CONTROL HOSE	65	<b>AIR CONDITIONING &amp; REFRIGERATION SYSTEM</b>	<b>81</b>	T-BOLT CLAMPS MERCHANDISER 33 SERIES	100
PACKAGED SAFETY STRIPE™ II RETURN FUEL LINE/PCV/EVAPORATIVE EMISSION CONTROL HOSE	66	POLARSEAL™ HOSE	81	HEATER HOSE CONNECTOR ASSORTMENT	101
SUBMERSIBLE FUEL LINE HOSE	66	POLARSEAL™ II HOSE	81	FUEL HOSE CONNECTOR ASSORTMENT	101
FUEL FILL HOSE	67	POLARSEAL™ AND POLARSEAL™ II COUPLINGS AND ACCESSORIES	81	<b>PROFESSIONAL - TOOLS</b>	<b>102 - 110</b>
FUEL FILLER NECK HOSE	68	<b>WINDSHIELD WASHER &amp; VACUUM SYSTEM</b>	<b>82 - 83</b>	TIMING BELT INSTALLATION TOOLS	102
<b>FUEL SYSTEM - FUEL CAP</b>	<b>69 - 70</b>	WINDSHIELD WASHER, VACUUM AND RADIATOR OVERFLOW TUBING	82	HYDRAULIC TENSIONER PIN SET	102
FUEL CAPS	69	WINDSHIELD WIPER HOSE	82	SUBARU TIMING BELT SPACER TOOL	103
HEAVY-DUTY FLEET AND OFF-ROAD EQUIPMENT HEAVY-DUTY SADDLE TANK CAPS	70	CLAMSHELL PACKAGING	83	SUBARU STRETCHFIT™ BELT INSTALLATION TOOL	103
DIESEL EMISSION FLUID (DEF) CAPS - LOCKING & NON-LOCKING	70	SILICONE VACUUM TUBING (EGR HOSE) AND DPFE	83	STRETCHFIT™ BELT INSTALLATION TOOLS	103
<b>OIL &amp; LUBRICATION SYSTEM</b>	<b>71</b>	WET ARM WIPER TUBING	83	SERPENTINE BELT INSTALLATION TOOL	103
TRANSMISSION OIL COOLER HOSE	71	<b>AIR &amp; DEFROSTER SYSTEM</b>	<b>84 - 90</b>	BELT WEAR GAUGE	104
PCV OIL FILLER CAPS	71	TURBOCHARGER HOSE	84	V-RIBBED BELT STRAP PULLEY WRENCH	104
OIL FILLER CAPS	71	MOULDED TURBO CHARGER HOSE	85	TRUFLEX™ AND POWERATED™ BELT LENGTH FINDER	104
<b>POWER STEERING SYSTEM</b>	<b>72 - 73</b>	TURBOCHARGER REDUCER HOSE	85	BELT MEASURER	105
POWER STEERING HOSE ASSEMBLIES	72	GREEN STRIPE™ RING RETAINED TURBOCHARGER HOSE	86	KRIKIT™ V-BELT TENSION GAUGE	105
LOW PRESSURE POWER STEERING RETURN LINE ASSEMBLIES	72	DEFROSTER/AIR INTAKE HOSE	86	KRIKIT™ II (V-RIBBED) BELT TENSION GAUGE	105
PS188 POWER STEERING HOSE	72	GREEN STRIPE™ HEAVY-DUTY AIR VENT HOSE	87	ALTERNATOR DECOUPLER PULLEY (ADP) TOOL KIT	105
BULK POWER STEERING HOSE	73	PVC AIRLINE HOSE	87	COOLANT AND BATTERY REFRACTOMETER	106
HIGH TEMPERATURE 300° CPE POWER STEERING RETURN LINE HOSE	73	AV SERIES AIR VENT HOSE	88	HOSE CUTTERS (HAND-HELD) AND REPLACEMENT BLADES	106
POWER STEERING REPAIR KITS	73	EMISSION CONTROL DUCT HOSE	88	POWERCLEAN™ FLUSH TOOL	107
		AIR VENT HOSE	89	POWER CLEAN™ ACCESSORY - HEAVY DUTY CONE	108
		DIESEL EMISSION FLUID (DEF) HOSE ASSEMBLIES	90	SURELOK™ QUICK-RELEASE PLIERS	108
		DIESEL EMISSION FLUID (DEF) TANK FILL HOSE	90	SONIC TENSION METER	108
		<b>SERVICE HOSE</b>	<b>91</b>	COOLING SYSTEM PRESSURE TESTER	109
		<b>FLEET ACCESSORIES</b>	<b>92</b>	DRIVEALIGN™ LASER TOOL	109
		<b>MERCHANDISERS &amp; SALES AIDS</b>	<b>93 - 101</b>	STATIC STRAPS	110
		INTERACTIVE ABDS/SBDS SYSTEM DISPLAY	93		
		BELT FINGER RACK	93		



**WARNING**

Be safe! Do not use Gates belts, pulleys or sprockets on any aircraft propeller or rotor drive systems or in-flight accessory drives. Gates products are not designed or intended for aircraft use.

**CAUTION**

Use Gates products only on applications specified in Gates literature. Install and maintain products according to the vehicle manufacturers' recommended procedures and with recommended tools. Failure to follow these instructions could result in injury or property damage. Gates disclaims all liability due to failure to follow these instructions.

**WARRANTY**

Goods are warranted to be free from defects in material or workmanship for the life of the Goods (or the published recommended replacement interval specified by Gates). Gates will replace or repair, at its option, any Goods proved defective in material or workmanship during the warranty period. This is the sole remedy for breach of warranty. Color fade and color difference is not warranted. This warranty is void if the defect is caused by improper installation, use or maintenance of the Goods, or used for racing or competition. Goods are not warranted to comply with laws that may apply to uses of the Goods not stated in related materials, e.g., use in manned or unmanned aviation or life support applications.

ALL OTHER WARRANTIES, EXPRESS OR IMPLIED, INCLUDING, BUT NOT LIMITED TO WARRANTIES OF MERCHANTABILITY AND FITNESS FOR A PARTICULAR PURPOSE, ARE EXPRESSLY DISCLAIMED. FAILURE TO REPLACE TIMING BELTS OR OTHER GATES PRODUCTS AS SPECIFIED MAY RESULT IN CATASTROPHIC ENGINE OR EQUIPMENT DAMAGE FOR WHICH GATES DISCLAIMS ALL RESPONSIBILITY, TO THE EXTENT PERMITTED BY APPLICABLE LAW.

COMPLETE DETAILS ON GATES WARRANTY PERIODS FOR ALL PRODUCTS CAN BE FOUND ON THE GATES WEBSITE. [WWW.GATESAUSTRALIA.COM.AU](http://WWW.GATESAUSTRALIA.COM.AU)



# MISSION - CRITICAL POWER TRANSMISSION & FLUID POWER SOLUTIONS

Gates Corporation is a global diversified industrial company that provides advanced power transmission and fluid transfer solutions by engineering products and services that reduce the total cost of ownership for a wide variety of applications.

An engineering leader with a strong foundation in research and development, Gates is committed to advancing the science of motion performance by developing safe, forward-thinking products, services, systems and solutions, as well as fostering long-term customer and employee relationships.

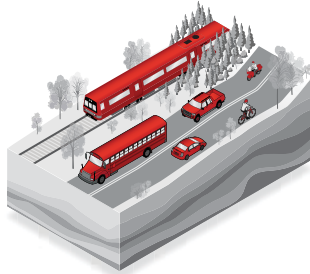
## TOP 3 GLOBAL PROVIDER FOR

- » POWER TRANSMISSION BELTS
- » HYDRAULICS
- » ENGINE SYSTEMS METALS
- » OIL & GAS DRILLING HOSE

- » 13,500 + EMPLOYEES
- » 100 + LOCATIONS
- » 128 COUNTRIES SOLD TO

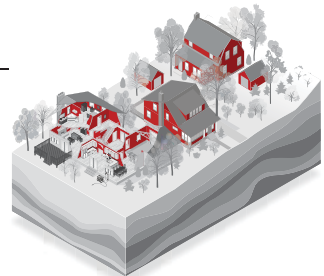
## IN MOTION

Providing an extensive range of high-performance transmission solutions for original equipment and replacement applications.



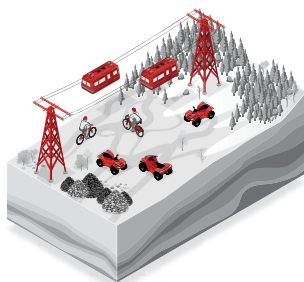
## AT HOME

Making everyday home life easier and more efficient through a broad range of products and solutions.



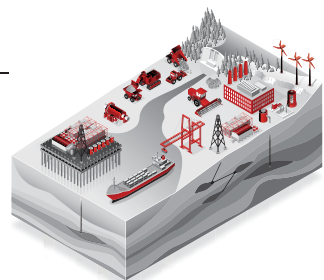
## AT PLAY

Power indoor and outdoor play, from the most extreme to the more familiar.



## IN THE FIELD

Developing advanced technology that powers everything from construction equipment to windmills.



## IN THE FACTORY

Delivering specialised industry solutions that enable superior manufacturing and automation when and where quality matters most.



- A REPUTATION BUILT OVER 100+ YEARS
- GLOBALLY RECOGNISED
- WELL KNOWN ACROSS INDUSTRIAL SEGMENTS
- STANDS FOR QUALITY AND RELIABILITY
- OVER A CENTURY OF MARKET LEADING INNOVATION
- A CULTURE DRIVEN BY PRIDE AND POSSIBILITY

# TIMING BELT SYSTEM

Today, Gates is the world's largest manufacturer of Timing Belts and Timing Component Kits (TCKs). For nearly every make and model, Gates covers your automotive applications with Timing Belts and TCKs that are OE-equivalent or better in service life and performance. As the Original Equipment Manufacturer (OEM) for virtually every vehicle manufacturer worldwide, you can be confident every time you install Gates. Restore your customers' drive system to factory original condition with Gates Timing Belts and Timing Component Kits.



## AUTOMOTIVE TIMING BELTS

Gates is the largest global manufacturer of OE timing belts. This means Gates is able to cover the aftermarket with timing belts that are OE-equivalent, or better, in service life and performance. Gates timing belts are manufactured using the same high grade materials and processes as the OE to ensure superior heat and contamination resistance. Gates timing belts provide the most extensive coverage in the industry.

- Aramid reinforced nylon jackets and back side jackets for longer wear.
- High grade HNBR rubber for superior heat and contamination resistance.
- Unlike some competitors, Gates does not substitute inferior belt constructions for premium constructions specified by the OEM on any application.
- Premium high strength tensile members.
- Most extensive coverage in the industry.
- Timing belt sets also available for engines which have multiple timing belts.



## TIMING COMPONENT KITS

Why take a chance? With Gates TCKs, you can avoid warranties and comebacks by replacing all critical system components at the same time.

- Kits include OE Exact or OE Performance tensioners and idlers.
- Kits for virtually every timing belt-driven application.
- Total solution for any application, including belts, idler(s), tensioners, hydraulic tensioners, supporting hardware, instructions and Technical Service Bulletins for troublesome applications.



### EUROPEAN TIMING COMPONENT KITS NOW AVAILABLE FROM GATES

A badly functioning timing belt drive system can cause serious and costly problems. This is especially so for European vehicles. Avoid expensive premature failures by changing all the components at the same time. These kits contain all the relevant timing components to complete a full timing system service for European vehicles. Trusted by vehicle manufacturers. Recommended by quality mechanics. Relied on by motorists.





## TIMING BELT COMPONENT KITS WITH WATER PUMP

Gates Timing Belt Component Kits with Water Pump (TCKWP) offer customers the best and most complete repair solution by including the same OE components as our TCKs: timing belts, pulleys and tensioners as well as a water pump. Timing belt driven water pumps should always be replaced at the same time as the timing belt. Don't take chances. With Gates TCKWPs, you can avoid returns by replacing all critical system components at the same time.

- Water pumps are designed and built for long-lasting, efficient cooling.
- Everything you need to do the job right, all in one box.



## HYDRAULIC TENSIONERS

For applications with high loads and/or angular vibrations, where a mechanical automatic tensioner cannot provide sufficient damping or tensioner movement.

- All parts are either OE sourced or engineered by Gates to meet or exceed OE performance standards.
- Gates tensioner pin set tool (Part No. 91010) for securing piston.



## POWERGRIP™ INDIVIDUAL TIMING COMPONENTS

Gates PowerGrip™ timing components for those who want to replace individual parts.

- Components include automatic, manual and hydraulic tensioners and idler pulleys.
- Only OE components for the most popular and problematic applications.



## RACING PERFORMANCE TIMING BELTS

No other belts help protect your engine investment while delivering high performance like Gates Racing Performance Timing Belts.

Gates Racing Performance Timing Belts are incredibly strong and extremely heat-resistant. Constructed of HNBR elastomeric composites, Gates Racing Performance Timing Belts are as much as 300% stronger than stock belts and deliver up to three times the heat resistance. You can count on them to hold up to the rigors of high horsepower, which is extremely important with interference engines.

- Superior construction provides up to three times the heat resistance.
- Gripping teeth reinforced with aramid and nylon rubber minimise wear.
- As much as 300% stronger than the standard aftermarket belt.
- Withstand the rigors of high horsepower applications.





# ACCESSORY BELT DRIVE SYSTEM

## MICRO-V® COMPONENT KITS

Gates belt and tensioner kits make it easy to service front-end accessory drives. Eliminate customer comebacks by fixing the vehicle the first time by servicing the entire accessory drive. Neglecting to replace the tensioner and pulley(s) at the same time you replace the belt can ultimately shorten the life of the belt as well as other front-end accessory components.

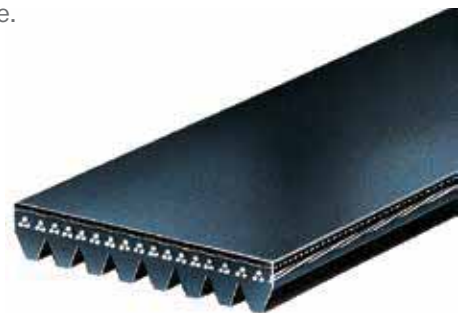
- Broad vehicle coverages.
- Includes multi-ribbed belt with premium EPDM construction and related tensioners and idlers.



## MICRO-V® BELTS

Every vehicle can depend on the superior quality of Gates precision fit Micro-V® belts. With advanced technology that matches the OE size, construction and materials Micro-V® ensures optimal vehicle performance. Micro-V® belts provide peak operating performance while delivering the highest value available.

- Meets or exceeds all specifications from the Original Equipment Manufacturer.
- Designed for small diameter pulleys, backside idlers, and for use with (or without) automatic tensioners.
- Special belt construction eliminate belt noise, reduces tension loss, and solves problem drive applications.
- Utilises advanced materials like Aramid Fiber found in bullet-proof vests and crack and heat resistant EPDM materials.
- Unique form grinding of each individual belt assures precise dimensional control.
- Meets or exceeds SAE J1459, SAE J2432, and SAE J1596 specifications.



Gates also offers Micro-V® Green Stripe™ belts with greater load-carrying capacity designed for demanding, heavy-service drives.



## MICRO-V® AT™ EMD BELTS

Electrical Mechanical Drive (EMD) belt engineered to meet the demands of Electric Assist models.

- Enhanced undercord of synthetic fibers for extended belt life.
- Manufactured using Gates TwistLock™ aramid cord technology for increased load.





### MICRO-V® DUAL-SIDED BELTS

For replacing original equipment belts on accessory drives that require a higher degree of efficiency when transmitting power. Designed for small diameter pulleys and for use with or without automatic tensioners.

- V-ribbed on both sides of the belt.
- Specially designed to resist wear and cracking due to overall reduced thickness in construction.
- Broad coverage on unique applications.
- Custom setup for Gates specialised solution kits for accessory drives that cause problems from the OEM.



### STRETCH FIT™ BELTS

Gates Stretch Fit™ belts, with exclusive self-tensioning technology, were the first aftermarket belts engineered to fit like a glove and perform properly on these unique stretch fit drive systems and Gates continues to add coverage to this growing market segment.

- Patented, highly engineered EPDM belt ribs are extremely resistant to oil leaks, wear and pilling.
- Gates engineered tensile cord has the needed combination of strength and flexibility using advanced polyamide tensile cord.
- Specially formulated adhesive literally locks on to the cord - allowing the cord to elongate and stretch, but never lose tension.

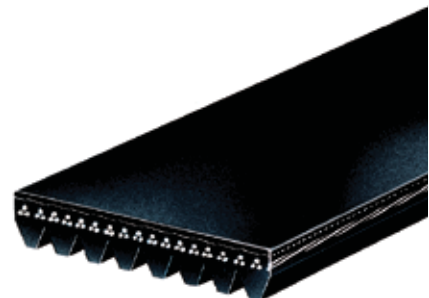


**Prior to installation, Stretch Fit™ belts are shorter than the actual working length, but once installed they automatically tension - maintaining the proper tension over the life of the belt and ensuring optimum load-carrying capacity.**

### RPM MICRO-V® BELTS

Specially-engineered to deliver optimum boost from supercharged engines, these belts feature the most advanced technology.

- Nylon-fiber reinforced undercord.
- High-modulus, low stretch aramid or polyester cord.
- Advanced, exact-fit, precision-ground belt profile.
- Strict OEM dimensional tolerances.
- Two layers of adhesion for increased durability.



**These features result in lower heat, noise, vibration, and belt slip, for increased durability, improved power transmission, and unsurpassed boost. Racing. Performance. Muscle.**





 **XL™ V-BELTS**

Replacement belt for the most demanding engine drives. Due to thermal forces, this variable notched belt tightens on the drive as it gets hot. This results in improved belt performance by reducing tension decay and noise.


- Fiber-loaded rubber stock puts more flexibility along the length of the belt, yet gives the belt greater lateral stability in the pulley.
- Thermally active tensile cords for maintenance-free performance when properly installed and tensioned.
- Form ground to ensure precise top width and sidewall dimensional control for proper fit in pulley as well as a smoother, quieter running belt.
- Meets or exceeds SAE J636C specifications.

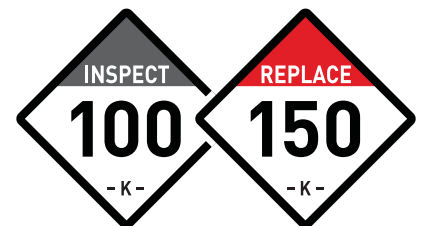


Gates also offers Green Stripe™ XL™ V-belts as a premium-quality replacement for heavy-duty engines.

BE SYSTEM SMART  
STAY ON THE MOVE

PROTECT YOURSELF AND YOUR INVESTMENT FROM INCONVENIENT BREAKDOWNS AND EXPENSIVE REPAIRS BY FULLY MAINTAINING YOUR VEHICLE'S CRITICAL ACCESSORY BELT DRIVE SYSTEM. INSPECT THE SYSTEM AT 100,000KMS AND REPLACE WORN COMPONENTS BY 150,000KMS.





System failures can lead to expensive engine repairs. The best way to prevent this is to remember to start inspecting the accessory system at 100,000 km and replace worn components by 150,000 km or as advised by the manufacturer.

The Gates brand of accessory system replacement parts is trusted by vehicle manufacturers, recommended by quality mechanics and relied on by motorists. Be sure to use Gates parts when it's time for replacement.



## DRIVEALIGN™ AUTOMATIC BELT TENSIONERS

Gates is a global leader in Original Equipment (OE) System Design. With a full line of tensioners and international manufacturing locations, you can count on Gates to supply premium quality DriveAlign™ Automatic Belt Tensioners. Gates ensures that every tensioner they manufacture is built to rigid tolerances and specifications that guarantee OE fit, form and function.

- Full line coverage for passenger car.
- Manufactured using the same technology as Original Equipment Manufacturer (OEM) part, assuring a factory match.
- Patented vibration damping system improves tensioners, belts and accessory life.
- Torsional round spring design provides consistent tension and does not allow contamination.
- Comprehensive line includes parts to fit cars, vans, SUV's and light trucks.



## DRIVEALIGN™ IDLER PULLEYS

Built to last by resisting dirt, salt, and other under-hood contaminants and are designed for use on passenger cars and light trucks as a locked center tensioning pulley, an automatic belt tensioner pulley or an idler pulley.

- Steel or thermoplastic construction provides high durability for long life.
- Bearing meets or exceeds OE and is designed for application specific speed and load requirements.
- Reliable operation under severe conditions.
- Mounting hardware included on some popular applications.



## ALTERNATOR DECOUPLER PULLEYS (ADP)

Gates Alternator Decoupler Pulleys provide vibration isolation within the Accessory Belt Drive System resulting in smoother engine performance and efficiency and increased belt and component life. The line consists of overrunning alternator decoupler pulleys and one way clutches (not interchangeable).

- Exact OE replacement.
- Patented design unmatched by any other supplier.
- Torsion spring absorbs engine vibration for quieter, smoother ride.
- Chosen by OEM to reduce noise, vibration and harshness.
- Need tools? Use the ADP Tool Kit (Part No. 91024).





### DRIVEALIGN™ TORSIONAL VIBRATION DAMPER

The torsional vibration damper positively affects the performance of all components in the accessory belt drive system.

- Prevents failure of the crankshaft by fatigue.
- Decreases wear and tear on the belt, tensioner and other components in the driven assembly.
- Improves noise, vibration and harshness (NVH) characteristics, and therefore increases the comfort of vehicle drivers and their passengers.
- As an OE supplier Gates offers a wide range of high-quality dampers to the aftermarket.



### EUROGRIP™ OE DRIVE COUPLERS

Gates is the only manufacturer in the aftermarket offering EuroGrip™ Original Equipment (OE) Drive Couplers. That's because Gates designed, engineered and produced new technology for European Original Equipment Manufacturers (OEM) to help drive accessories in compact engine compartments.

Using Gates proven synchronous belt technology, the flexible coupling connects the drive pulley to the decoupler pulley on the alternator and air conditioning compressor, working to dampen engine vibration and increase performance. Our high quality OE replacement couplings guarantee a perfect fit every time.

- Designed for specific VW and Volvo vehicles.
- Lubricated jacket minimises coupling and end piece wear and retains tooth integrity during operation.
- Glass fibre cord provides excellent dimensional stability at high rotational speeds.
- Fibre-loaded construction maximises torque capability, controls damping and provides excellent age resistance.
- Coupling's flexibility tolerates misalignment in components.
- Predictable shear properties allow for component protection.



### FAN PULLEY BRACKETS

OE-exact fan pulley brackets are constructed from high-quality materials for maximum durability and strength.

- High-quality bearings and casting materials withstand vibrations and imbalances for maximum service life.
- OE-exact design provides a precise fit to ensure easy installation.
- Designed to provide the proper structure and support for the fan clutch.





# HEAVY - DUTY BELT DRIVE SYSTEM



## FLEETRUNNER™ HEAVY-DUTY V-BELTS

Patented EPDM construction with distinct green overcord built specifically for more durability and longer life on heavy-duty drives.

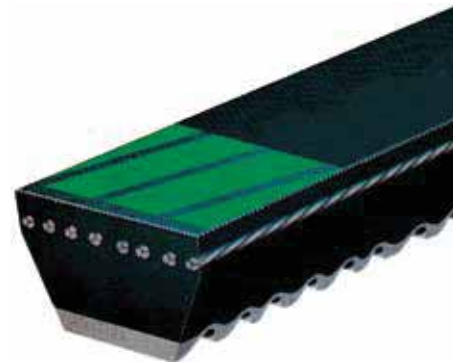
- Outperforms the competition on the most troublesome drives.
- Special compound provides un-matched flexibility, stability, load carrying capacity and belt life.
- Patented material provides peak performance at extreme prolonged operating temperatures.
- Heavy-duty construction resists cracking and wear.
- Oil and heat resistant.
- Unique undercord notch pattern offers increased flexibility for smaller diameter pulleys.
- Available in over 70 sizes.



## GREEN STRIPE™ XL™ V-BELTS

Premium quality replacement belts for heavy-duty engines.

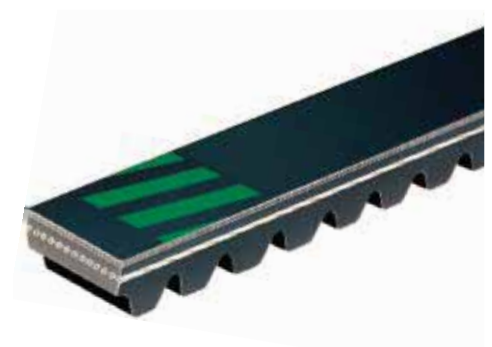
- Fibre loaded rubber stock puts added flexibility along belt's length, yet affords greater lateral stability.
- Variable notch pattern causes belt to run cooler, quieter and with less bending stress.
- Precision V-forming process assures exact size and angle control.
- High tenacity tensile cords and special layer of reinforcement for long, maintenance-free performance when belt is properly installed and tensioned.
- Meets or exceeds SAE 636 specifications.
- Meets or exceeds RMA standards for static conductivity.



## GREEN STRIPE™ TRUCK AND BUS SERIES V-BELTS

Specifically designed for heavy-duty truck, bus and off-road equipment applications. Absorbs normal shock loads without damage to belt.

- Special tensile cords give high stretch resistance.
- Special notch design resists cracking while providing tensile member support during operation.
- Oil and heat-resistant construction throughout.
- Meets SAE J636b and SAE J637 specifications.





### GREEN STRIPE™ POWERBAND™ BELTS

Designed for problem, heavy-duty, heavily vibrating applications requiring belt sets. Tie-band feature joining belts together ensures stability lacking in ordinary belt sets.

- Even load distribution between strands provides better shock load absorption.
- Belt cannot turn over or slip off drive.
- Unique tensile cord design gives belt extra strength, added flexibility and shock-load resistance.
- Moulded notches reduce bending stress, especially on small diameter pulleys, while dissipating heat.
- Meets or exceeds SAE J1459 specifications.



### TRU-POWER™ V-BELTS

Heavy-duty replacement belts specially designed for Asian bus applications.

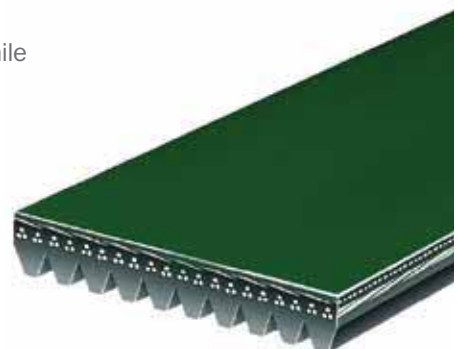
- Precision formed / ground special moulded regular notch design ensures proper fit in pulley.
- Deep notch pattern that allows greater flexibility over small diameter pulleys and helps keep belt cool.
- Made with thermally active polyester tensile cord that shrinks when temperature rises and maintains tension.
- Loaded with directional fibre for stability and offers high shock load resistance.
- Available in singles and Powerbands™.
- Heat and oil resistant construction.
- Meets SAE; JASO specifications.



### FLEETRANNER™ MICRO-V® BELTS

Designed for the toughest applications, FleetRunner™ construction provides superior flexibility, stability, load capacity and unsurpassed belt life. Patented materials deliver peak performance at extreme prolonged operating temperatures making this belt the ultimate problem solver. An advanced blend of EPDM rubber technology withstands the modern threats of deterioration from increased exposure to ozone and water-based coolants. FleetRunner™ does this all while providing the lowest cost per km for fleets, including ¾ + 1 ton pickups.

- Belt of choice by fleets, including ¾ + 1 ton pickups.
- Lowest cost per km.
- Consistently outperforms all competitors.
- Outstanding crack resistance at extreme temperatures.
- Problem-solver designed for the toughest applications.





### EXTRA SERVICE MICRO-V® XF™ BELTS

Extensive testing has shown that it lasts up to twice as long as standard multi-ribbed belts. Extra service Micro-V® XF consistently outperforms all competitors in terms of wear and heat resistance, load capacity and flexibility.

- Built to original equipment quality standards.
- Engineered specifically for fleets and heavy-duty applications in trucks and buses.
- Newly developed polyester tensile cords guarantee low stretch and optimum load carrying capacity at even the highest tensions.
- Extremely resistant to piling, oil drops and UV exposure.
- Low belt profile increases flex life, thus ensuring higher mileage and trouble free performance.



### GREEN STRIPE™ MICRO-V® BELTS

Long wearing fibre-loaded stocks with greater load-carrying capacity designed for demanding, heavy-service drives. Designed for replacing original belts on accessory drives and other heavy-duty V-ribbed belt applications.

- Special belt construction eliminates belt noise, reduce tension loss and solves problem drive applications.
- Extra heavy-duty construction resists cracking and wear.
- Precision ground to assure optimum belt-to-pulley fit.
- Special formation process for precise dimensional control.
- Reinforced with stretch-resistant, thermally active polyester tensile members.
- Meets or exceeds SAE J1459 specifications.



### DRIVEALIGN™ HEAVY-DUTY IDLER PULLEYS

Long-lasting pulleys built to endure the rigors of today's heavy-duty, fleet and off-road equipment.

- Superior bearings outperform OE Idler Pulleys.
- Robust and high-quality pulley materials to withstand contaminants.
- New hardware included on some popular applications.
- Built with precise dimensional tolerance to ensure proper fit and long lasting performance.
- Built with corrosive-resistant coating to prevent rust and increase durability.







## DRIVEALIGN™ HEAVY-DUTY AUTOMATIC BELT TENSIONERS

The longest lasting belt tensioners in the industry. Engineered to exceed demanding OEM requirements. In laboratory tests, under extreme peak-to-peak vibration and contamination tests, DriveAlign™ heavy-duty tensioners lasted up to three times longer than competitive aftermarket tensioners.

- Labyrinth Seal – prevents contamination of internal parts for maximum durability and service life.
- Machined Steel Pulley – reduces surface wear while shielding internal bearing from outside contaminants.
- Double Row Bearings – twin rows of bearings carry more load and last up to three times longer than two individual bearings.
- Optimised Components – engineered for maximum strength and durability.
- Patented Design – provides superior belt alignment and tension for improved drive efficiency and life.
- Round Spring Wire – includes chrome-silicone torsion spring for less flex-fatigue than flat-wire designs.
- Patented Damping Mechanism – provides maximum stability, reducing vibration and increasing the life of belt, tensioner and other accessory drive components.



## BUS BELT TENSIONER

### INSTALL CONFIDENCE, INSTALL GATES

The new Gates DriveAlign™ Heavy-Duty Bus Belt Tensioner (#38655) significantly outlasts other tensioners in the punishing environment of the bus engine compartment. This purpose-built tensioner utilises all the patented features that make DriveAlign™ tensioners the best in the market today. Features include a longer swing arm, heavy-duty components and a large-diameter double groove pulley to accommodate Powerband™ belts. In real-world testing it delivered **up to three times the service life** of the OEM version. Smoother operation and superior damping increases belt life, reducing downtime and extending maintenance intervals. The exclusive, patented shoe damper absorbs shock loads better than any other tensioner brand - including OEM - and protects A/C compressor and generator bearings from shock loads and excess heat.

Includes an adapter plate that provides a wide range of positioning options and enables the tensioner to be installed on most engines, even those with retrofit brackets.



## BELT WEAR GAUGE

**BELT WEAR GAUGE - NEW AND IMPROVED. EASIER TO USE!**

The Gates Belt Wear Gauge was designed with input from automotive technicians. It is easy to use and gives instant pass / fail results. You can use it on or off the vehicle, one-handed, and even in places where you can't see.

**REQUEST A GATES BELTWEAR GAUGE AT  
WWW.GATESAUSTRALIA.COM.AU/BELTWEAR**

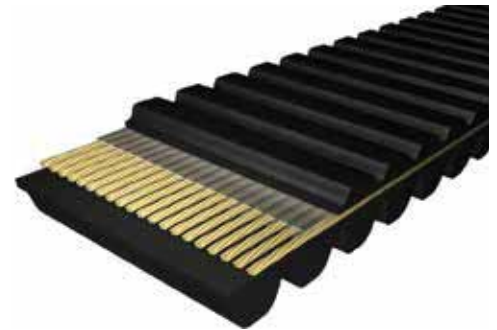


# POWER SPORT RECREATIONAL BELTS

## G-FORCE™ CVT BELTS

Gates G-Force™ belts are the first of a new generation of Continuously Variable Transmission (CVT) belts. Designed using Finite Element Analysis (FEA) techniques, the latest construction, materials and measuring technology G-Force™ drive belts are designed for superior fit, performance and durability for today's recreational and utility all-terrain equipment. Identical to OEM, G-Force™ belts are constructed with double or single cog designs to match the OEM belt. Extreme testing, in controlled environments as well as on race vehicles, has proven the G-Force™ belt to be high performing and durable, with no clutching adjustments necessary at installation.

- OEM constructed drop-in belt with no clutching adjustments.
- Tested under extreme conditions in controlled environments as well as on race vehicles.
- Viability testing completed to match shift curves.
- Dynamometer testing proves G-Force™ belts outlast other high-performance belts by as much as five times.
- Advanced aramid tensile cords and reinforced fibre loaded undercord are used in construction for durability and dependability.
- Proprietary measuring technology assures exact fit.



## POWERLINK™ BELTS

Gates POWERLINK™ drive belts are specially designed for a variety of motorised Continuous Variable Transmission (CVT) applications including street legal step-through scooters and Go-Karts. POWERLINK™ belts are available in two types:

- Conventional belt offers OE-equivalent performance and durability.
- Premium belt provides longer durability for high performance applications.





DRIVEN BY POSSIBILITY™

# WORK & PLAY HARD WITH THE BEST ATV/ UTV & SLED BELTS



**G-FORCE™**



# INDUSTRIAL BELTS

## SUPER HC™ AND SUPER HC™ MOULDED NOTCH V-BELTS

Recommended for use on special drives where space and weight limitations are critical. These “narrow” cross-sections can transmit up to three times the horsepower of the classical cross-sections (A, B, C and D) in the same amount of drive space. Suitable for all industrial applications, particularly where space, weight and horsepower capacity are critical.

- Gates curves provide proper cord support and full contact with the sheave-groove for uniform loading, uniform wear and increased belt life.
- Flex-bonded cords are strongly bonded to the body of the belt resulting in equal load distribution and the absorption of bending stress without cord deterioration.
- The Flex-Weave™ cover is a patented construction for longer cover life, providing extended protection to the core of the belt from oil, dirt, and heat.
- Meets or exceeds RMA standards for static conductivity and heat and oil resistance.



## INDUSTRIAL MICRO-V® BELTS (J, L AND M SERIES)

Exclusive truncated (shortened) profile gives Micro-V® belts increased flexibility, reduced heat buildup and allows performance at higher speeds on smaller diameter sheaves. Well suited for applications such as appliances, outdoor power equipment, roller conveyors, machine tools, medical equipment and exercise equipment.

- Fibre reinforced ribs for excellent wear resistance.
- High modulus, low-stretch tensile member for added strength and dependability.
- Smooth running for minimal vibration at high speeds.
- Meets or exceeds RMA standards for static conductivity and heat and oil resistance.



## SUPER HC™ AND SUPER HC™ MOULDED NOTCH POWERBAND™ V-BELTS

The PowerBand™ construction allows multiple belts to function as a single unit, with even load distribution and each strand fitting securely in the sheave groove. Recommended for multiple V-belt drives exposed to pulsating or heavy shock loads which can make belts whip, turn over or jump off the drive.

- The tie band assures high lateral rigidity, guiding the belt in a straight line and preventing it from coming off the drive.
- Concave sidewalls provide proper cord support and full contact with the sheave-groove for equal loading and uniform wear.
- Flex-bonded cords are strongly bonded to the body of the belt resulting in equal load distribution and the absorption of bending stress without cord deterioration.
- Meets or exceeds RMA standards for static conductivity and heat and oil resistance.





## TRI-POWER™ BELTS

Constructed with Gates proprietary construction, this belt has a superior combination of flex and load carrying capacity, as well as less stretch resulting in less maintenance. This provides superior performance on the toughest heavy-duty A, B and C Section industrial drives. Suitable for all industrial applications, particularly where small or sub-minimal sheave diameters are required.

- Notches moulded into the belt during manufacturing make this belt well suited for drives with smaller diameter sheaves.
- Belt edge is machined for even sheave groove contact resulting in less slip and wear.
- Flex-bonded cords are strongly bonded to the body of the belt resulting in equal load distribution and the absorption of bending stress without cord deterioration.
- Meets RMA oil and heat resistant standards.
- Meets RMA static conductivity requirements.



**Note:** Tri-Power™ belts are available in AX, BX, and CX sizes. Tri-Power™ belts longer than 210 inches are a banded, cut notch construction.

## HI-POWER™ II BELTS

Featuring a composite, multi-purpose construction, these belts resist oil and heat, ozone, sunlight, weather and aging. Suitable for all industrial applications, including V-flat drives.

- Gates Curves provide proper cord support and full contact with the sheave-groove for uniform loading, uniform wear and increased belt life.
- Flex-bonded cords are strongly bonded to the body of the belt resulting in equal load distribution and the absorption of bending stress without cord deterioration.
- The Flex-Weave™ Cover is a patented fabric construction for longer cover life, providing extended protection to the belt core from oil, dirt and heat.
- Meets or exceeds RMA standards for static conductivity and oil and heat resistance.





# LAWN & GARDEN BELTS

## BLADERUNNER™ BELTS

An aftermarket belt designed and applied to specific unique applications providing exact OEM fit, construction and performance of leading lawn and garden equipment manufacturers. Built to withstand the rigorous start and stop operation of outdoor power equipment.

- Meets or exceeds the performance of each specific application.
- Utilises aramid cord construction in most cases.
- Smooth operation during frequent and severe shock loads.
- Reduces costly downtime and labor associated with replacing a belt.
- Superior performance over fractional horsepower belts on recommended applications.



## POWERATED™ V-BELTS

These green belts are an alternative to conventional light-duty belts, with high performance construction delivering more horsepower, less stretch and providing longer service life. PoweRated™ belts are suitable for outdoor power equipment, appliances and industrial applications where Fractional Horsepower (FHP) belts are typically used.

- Bareback construction for smooth clutching on shock loaded, backside-idler driven equipment.
- Aramid tensile cords combine limited stretch with extraordinary strength and durability.
- Meets RMA oil and heat resistant standards.
- Extra long life and dependability in deep powder or hard pack conditions.



**Note:** PoweRated™ V-Belts can be substituted for equivalent sizes of Truflex™ V-Belts.

PoweRated™ belts do not meet RMA requirements for static conductivity.



## TRUFLEX™ V-BELTS

Truflex™ belts feature superior length stability for minimal take-up requirements. Suitable for all industrial light-duty applications, usually using Fractional Horsepower (FHP) motors.

- Gates curves provide proper cord support and full contact with the sheave-groove for uniform loading, uniform wear and increased belt life.
- Flex-bonded cords are strongly bonded to the body of the belt resulting in equal load distribution and the absorption of bending stress without cord deterioration.
- The Flex-Weave™ cover is a patented construction for longer cover life, providing extended protection to the core of the belt from oil, dirt and heat.
- Meets or exceeds RMA standards for static conductivity and heat and oil resistance.



**Note:** Truflex™ belts are offered in cross sections 2L (0), 3L (1), 4L (2), 5L (3).





# COOLANT SYSTEM - WATER PUMPS



## WATER PUMPS

- Coverage includes Toyota Prius, Honda Civic, Ford Escape and more.
- Pumps manufactured to ISO/TS 16949 standards.
- 100% fully tested unitised bearings/seals.
- Quality packaging ensures intact delivery of all components.
- 100% inline quality tested.
- Metal impeller pumps available where applicable.
- Computerised machined surfaces for proper fit/sealing.
- Precisely balanced impeller for OE fit/function.



## WATER PUMPS WITH BACK HOUSINGS

- Allows the technician to replace both pieces with one pre-assembled unit.
- Order one part number and receive the water pump and back housing.
- 100% fully tested unitised bearings/seals.
- Reduces installation time and ensures trouble-free operation with reduced warranty claims and comebacks.



## ELECTRIC WATER PUMPS

- OE replacement ensures an exact fit and easy installation.
- Main engine electric water pumps come with gaskets or rubber seals to eliminate leaks.
- Auxiliary electric water pumps are sealed to prevent leaking.
- Electromagnetic power drives the impellers, thus eliminating the need for bearings and weep holes.



## WATER PUMPS - HEAVY-DUTY APPLICATIONS

- Our heavy-duty water pump offering is designed to handle rugged Fleet standards.
- Pumps manufactured to ISO/TS 16949 standards.
- 100% fully tested unitised bearings/seals.
- Gates heavy-duty water pumps, represented as a part number with an HD suffix, carry a warranty of 18 months or 250,000 kms / 5,400 hours, whichever comes first.
- Computerised machined surfaces for proper fit/sealing.

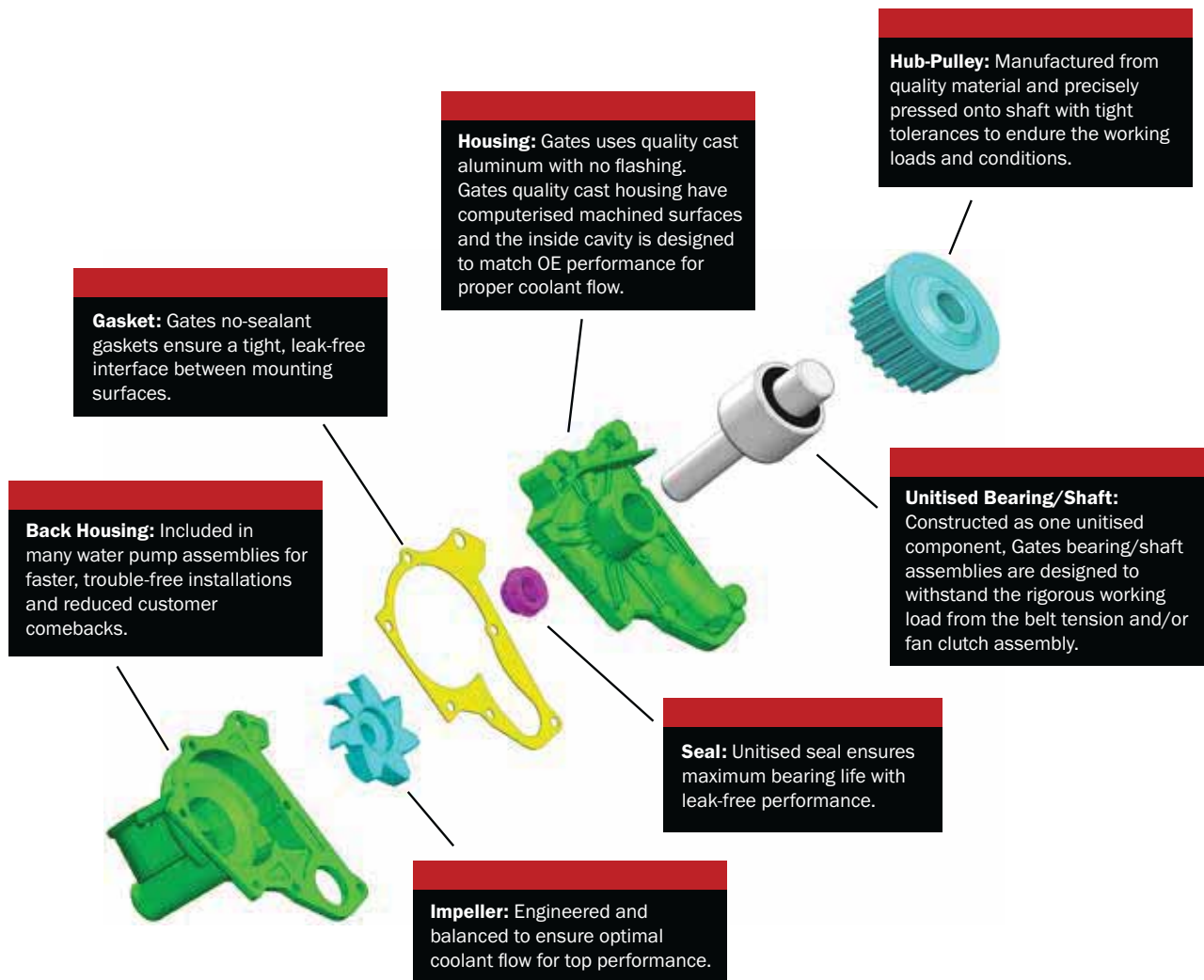






# GATES OFFERS A WARRANTY AND STATE-OF-THE-ART MANUFACTURING PROCESS.

Gates water pumps are recognised in the industry for their durability and superior quality. Gates water pumps are constructed with premium alloy materials and a 100% functional test of seals and bearings along with a 100% leakage test for both the casting and assembled water pump. We are committed to selling the highest quality new, never remanufactured, water pumps in the aftermarket. Our end goal is to provide our customers with worry-free operation for the life of their vehicle.





# COOLANT SYSTEM - HOSE

## HOSE SHELF LIFE

Storage environment, along with rubber materials, can vary the shelf life limit. Shelf life is difficult to quantify as many variables affect the hose. Proper storage precautions can result in three to five years of shelf life. Beyond this time, there can be a significant service life decrease, depending on storage environment variables.

Some variables include:

Hose should be stored in a cool, dry area never exceeding +100°F (+38°C). If stored below freezing, pre-warming may be required prior to handling, testing and placing into service. Store hose in original container. Never stack hose too high, as its weight can crush hose at the bottom of the stack. Gates recommends hose in extended storage be visually inspected and tested prior to use. Hose judged marginal should be replaced to avoid potential failure, property damage or bodily injury. Store hose on a first-in/first-out basis. Unusually long storage, or poor storage environment can deteriorate hose, reduce performance and may lead to premature failure.



## MOULDED COOLANT HOSE

Gates moulded coolant hose is manufactured to fit specific applications. Designed to meet or exceed OEM specifications. Approved for marine applications.

- Recommend for upper, lower, by-pass, heater and other coolant hose applications.
- Heat and ozone resistant cover.
- Engineered to resist electrochemical degradation - the leading cause of hose failure.
- Re-engineered materials resist vacuum collapse, this reduces the need for internal springs in many applications.
- Meets SAE 20R4 and 20R3 Type EC Class D-1 and D-2 specifications.
- Temperature rating: -40°F to 275°F (-40°C to 135°C) in coolant hose applications.



**Note:** Gates recommends replacing standard worm drive and spring loaded clamps with Gates PowerGrip™ SB Clamps each time a new coolant hose is installed.

**Caution:** Do not use for fuel or oil transfer applications.



## MODULAR RADIATOR HOSE

Moulded to fit specific applications. Factory quality connections are durable and eliminate coolant leaks.

- Engineered to resist electrochemical degradation – the leading cause of hose failure.
- Heat and ozone resistant cover.
- Meets SAE 20R4 and 20R3 Type EC Class D-1 and D-2 specifications.
- Temperature rating: -40 °F to +275 °F (-40 °C to +135 °C) in coolant hose applications.



**Note:** Gates recommends replacing standard worm drive and spring loaded clamps with Gates PowerGrip™ SB Clamps each time a new coolant hose is installed.

**Caution:** Do not use for fuel or oil transfer applications.

## MODULAR HOSES

OEM's are designing the majority of new coolant and heater hose parts as branched/modular assemblies. This is particularly so by European vehicle manufacturers, as European makes have the highest percentage of branched/modular hose. As such, Gates will continue to expand the range to offer the aftermarket replacement.

Hoses now have quick connects, sensors, restrictors, valves, and other components built into the hose, and this transformation is going to continue. The quick connects and brackets are for ease of assembly and orientation and T's are used to route additional hoses to new vehicle systems which require cooling.



**MODULAR HOSES REPRESENT GREAT SALES OPPORTUNITIES AS THEY TEND TO FAIL SLIGHTLY EARLIER THAN STANDARD HOSES**



 **SMALL INSIDE DIAMETER MOULDED COOLANT HOSE**

Specially designed, OEM style factory-moulded hose to fit today’s smaller, tighter-fitting engine compartments. Can be used for coolant and water applications. Approved for marine applications.

- Equivalent in design to OEM specifications and all the quality features of Gates moulded coolant hose.
- Engineered to resist electrochemical degradation – the leading cause of hose failure.
- Inside diameters range from 1/4” to 1”.
- Meets SAE 20R3 Type EC Class D-1 and D-2 specifications.
- Temperature rating: -40 °F to +275 °F (-40 °C to +135 °C) in coolant hose applications.



**Note:** Gates recommends replacing standard worm drive and spring loaded clamps with PowerGrip™ SB clamps each time a new coolant hose is installed.

**Caution:** Do not use for fuel or oil transfer applications.

 **MULTI-FIT COOLANT HOSE**

Gates Multi-Fit hose consists of two bends, a 45 and 90 degree. This enables the hose to be used in some applications as a replacement to small bore hose. The range consists of 7 part numbers ranging from 6mm ID to 25mm ID hose.

PART NO.	I.D. INCHES (MM)	LENGTH INCHES (MM)	PART NO.	I.D. INCHES (MM)	LENGTH INCHES (MM)
01-0001	1/4 (6)	20 (515)	01-0005	5/8 (15)	18 (460)
01-0002	5/16 (8)	20 (520)	01-0006	3/4 (19)	22 (550)
01-0003	3/8 (10)	21 (535)	01-0007	1 (25)	22 (550)
01-0004	1/2 (12)	19 (485)			



 **EMERGENCY 4WD KIT**

Looking for that convenient pack that will give you peace of mind? Gates 4WD Emergency Kit provides you with the things you need for that unexpected breakdown. Each kit contains the relevant radiator hose, V & Micro-V belts and hose clamps, packed conveniently all together for each application.



 **COOLANT HOSE PACKS**

Take the hassle out of shopping around for coolant hose parts. Each Gates hose pack includes the relevant hose parts you need for a complete coolant hose service. They even include the clamps.

- Convenient.
- Vehicle Specific.
- Value Pack.





## VULCO-FLEX™ II COOLANT HOSE

Gates Vulco-Flex™ II hose will bend in almost any direction. It easily replicates the angles and planes of a wide variety of expensive original equipment coolant hose, for quick, easy replacement.

- Improved sealing surface for greater leak resistance and increased flexibility for easier installation.
- Heat and ozone resistant cover.
- Rated for SAE 20R5 Class D-2 performance.
- High temperature rating up to +257 °F (+125 °C).

**Note:** Gates recommends replacing clamps each time a new coolant hose is installed.

**Caution:** Do not use for fuel or oil transfer applications.



PART NO.	I.D. INCHES (MM)	LENGTH INCHES (MM)
25150	1 1/8 (28)	12 (305)
25152	1 1/8 (28)	15 (381)
25154	1 1/8 (28)	18 (457)
25157	1 1/8 (28)	23 (584)
25180	1 1/8 (28), 1 1/4 (32)	19 (483)
25249	1 1/4 (32)	7 1/2 (191)
25250	1 1/4 (32)	9 1/2 (241)
25251	1 1/4 (32)	13 (330)
25252	1 1/4 (32)	15 (381)
25253	1 1/4 (32)	17 (432)
25254	1 1/4 (32)	18 1/2 (470)
25255	1 1/4 (32)	20 (508)
25257	1 1/4 (32)	23 (584)
25260	1 1/4 (32)	26 1/2 (673)
25262	1 1/4 (32)	30 (762)
25265	1 1/4 (32)	35 (889)
25269	1 1/4 (32)	41 (1041)
25284	1 1/4 (32), 1 3/8 (35)	26 (660)
25300	1 1/4 (32), 1 1/2 (38)	12 (305)

PART NO.	I.D. INCHES (MM)	LENGTH INCHES (MM)
25302	1 1/4 (32), 1 1/2 (38)	15 1/2 (394)
25305	1 1/4 (32), 1 1/2 (38)	19 1/2 (495)
25307	1 1/4 (32), 1 1/2 (38)	23 (584)
25309	1 1/4 (32), 1 1/2 (38)	26 (660)
25311	1 1/4 (32), 1 1/2 (38)	29 (737)
25321	1 1/4 (32), 1 1/2 (38)	44 (1118)
25384	1 3/8 (35)	25 (635)
25409	1 3/8 (35), 1 1/2 (38)	26 (660)
25428	1 3/8 (35), 1 5/8 (41)	17 (432)
25472	1 1/2 (38)	8 (203)
25473	1 1/2 (38)	10 1/2 (267)
25474	1 1/2 (38)	12 (305)
25476	1 1/2 (38)	14 (356)
25477	1 1/2 (38)	15 1/2 (394)
25478	1 1/2 (38)	17 (432)

PART NO.	I.D. INCHES (MM)	LENGTH INCHES (MM)
25480	1 1/2 (38)	20 (508)
25482	1 1/2 (38)	22 (559)
25484	1 1/2 (38)	25 (635)
25487	1 1/2 (38)	30 (762)
25490	1 1/2 (38)	35 (889)
25499	1 1/2 (38)	48 (1219)
25526	1 1/2 (38), 1 3/4 (44)	13 1/5 (335)
25527	1 1/2 (38), 1 3/4 (44)	15 (381)
25528	1 1/2 (38), 1 3/4 (44)	16 1/2 (419)
25530	1 1/2 (38), 1 3/4 (44)	20 (508)
25532	1 1/2 (38), 1 3/4 (44)	22 (559)
25535	1 1/2 (38), 1 3/4 (44)	27 (686)
25582	1 1/2 (38), 2 (51)	22 (559)
25804*	1 1/2 (38)	19 3/4 (508)
25806*	1 1/2 (38)	23 1/8 (589)
25808*	1 1/2 (38)	25 5/8 (653)

\* Hoses have 90° bend at one end.



## VULCO STRAIGHT COOLANT HOSE

Specially engineered stick hose is ideal for straight coolant/air connections in automotive, stationary engine, industrial and home applications.

- Heat-resistant cover.
- Meets SAE 20R1 Standard Wall Class D-2 requirements.
- Cover marked in one-inch increments for easy measuring and cutting allows “custom fit” light-duty coolant installations.
- Temperature rating: -40 °F to +257 °F (-40 °C to +125 °C).
- Sold in 3 ft. lengths.



**Caution:** Do not use for fuel or oil transfer applications.

PART NO.	I.D. INCHES (MM)	O.D. INCHES (MM)	WORK PRESS. (PSI)
24008	1/2 (13)	.89 (23)	105
24012	3/4 (19)	1.14 (29)	80
24014	7/8 (22)	1.27 (32)	80
24016	1 (25)	1.39 (35)	75
24018	1 1/8 (29)	1.52 (39)	75
24020	1 1/4 (32)	1.64 (42)	65
24022	1 3/8 (35)	1.77 (45)	65
24024	1 1/2 (38)	1.89 (48)	60
24026	1 5/8 (41)	2.02 (51)	55
24028	1 3/4 (44)	2.14 (54)	50
24030	1 7/8 (48)	2.27 (58)	50
24032	2 (51)	2.39 (61)	50
24034	2 1/8 (54)	2.52 (64)	45
24036	2 1/4 (57)	2.64 (67)	40
24038	2 3/8 (60)	2.77 (70)	40
24040	2 1/2 (64)	2.89 (73)	35
24042	2 5/8 (67)	3.02 (77)	30
24044	2 3/4 (70)	3.14 (80)	30
24046	2 7/8 (73)	3.27 (83)	25
24048	3 (76)	3.39 (86)	25
24052	3 1/4 (83)	3.64 (92)	20
24056	3 1/2 (89)	3.89 (99)	18
24064	4 (102)	4.39 (112)	12



## 90° MOULDED COOLANT HOSE

Not all cooling systems are the same. The need for coolant hose options extends well beyond the vehicle specific applicated hoses Gates are well known for. To create an easily identifiable range of coolant hoses Gates has introduced the 90° Moulded Coolant Hose program and brings a complete universal 90° range to the automotive aftermarket.

All popular I.D. hoses are offered in two lengths; the shorter length hose provides a solution for a known or tight fitting situation, whilst the longer length hose is able to cover more applications and can be easily trimmed to make an exact fit.

To aid the precise cutting of the hose all Gates 90° Moulded Coolant Hoses come with uniform increments marked along the length of each arm from the centre of the 90° bend, to assist with accurate cutting of the hose if required.

- Range contains all popular selling 90° Moulded Coolant Hose sizes.
- Engineered to resist electrochemical degradation – the leading cause of hose failure.
- SAE 20R4 and 20R3 Type EC Class D-1 and D-2 specifications.
- Temperature rating: -40 °C to +135 °C



**Caution:** Do not use for fuel or oil transfer applications.

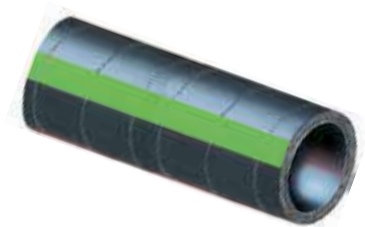
PART NUMBER	I.D. INCHES (MM)	ARM 1 CENTRELINE LENGTH INCHES (MM)	ARM 2 CENTRELINE LENGTH INCHES (MM)
03-0001	1/4 (6.35)	12 (300)	12 (300)
03-0002	5/16 (7.9)	12 (300)	12 (300)
03-0003	3/8 (9.5)	12 (300)	12 (300)
03-0004	1/2 (12.7)	4 1/4 (110)	4 1/4 (110)
03-0005	1/2 (12.7)	12 (300)	12 (300)
03-0006	5/8 (15.9)	4 (100)	4 (100)
03-0007	5/8 (15.9)	12 (300)	12 (300)
03-0008	3/4 (19)	5 (125)	5 (125)
03-0009	3/4 (19)	12 (300)	12 (300)
03-0010	1 (25.4)	5 (125)	5 (125)
03-0011	1 (25.4)	12 (300)	12 (300)
03-0012	1 1/4 (32)	6 (150)	6 (150)
03-0013	1 1/4 (32)	12 (300)	12 (300)
03-0014	1 1/2 (38)	6 (150)	6 (150)
03-0015	1 1/2 (38)	12 (300)	12 (300)
03-0016	1 3/4 (44)	7 (180)	7 (180)
03-0017	1 3/4 (44)	7 (180)	13 (325)
03-0018	2 (50)	8 (200)	8 (200)
03-0019	2 (50)	20 (500)	12 (300)
03-0020	2 1/4 (57)	7 (170)	7 (170)
03-0021	2 1/4 (57)	12 1/4 (310)	12 1/4 (310)



### GREEN STRIPE™ 2-PLY STRAIGHT COOLANT HOSE

Stick hose designed for demanding heavy-duty coolant/air applications. Approved for marine applications.

- Two-ply bias fabric construction to maximise flexibility and strength.
- Resists “cold water leaks” due to advanced EPDM tube and cover that stay soft and pliable, even under adverse operating conditions.
- Exceeds SAE 20R1 Type EC (Class D-1 Tube, and cover, Standard Wall).
- Cover marked in one-inch increments to facilitate approximate cut lengths, allows “custom-fit” installations.
- Engineered to resist electrochemical degradation – the leading cause of hose failure.
- Temperature rating: -40°F to +257°F (-40°C to +125°C).
- Packaging: Available in 3 ft. lengths.



**Note:** For a maintenance free connection, use PowerGrip™ SB clamps.

**Caution:** Do not use for fuel or oil transfer applications.

PART NO.	I.D. INCHES (MM)	O.D. INCHES (MM)	WORK PRESS. (PSI)
24212	3/4 (19)	1.14 (29)	100
24214	7/8 (22)	1.27 (32)	100
24216	1 (25.4)	1.39 (35)	100
24218	1 1/8 (32)	1.52 (38)	100
24220	1 1/4 (32)	1.64 (42)	100
24222	1 3/8 (35)	1.77 (45)	100
24224	1 1/2 (38)	1.89 (48)	100
24226	1 5/8 (41)	2.02 (51)	85
24228	1 3/4 (44)	2.14 (54)	75
24230	1 7/8 (48)	2.27 (58)	75
24232	2 (51)	2.39 (61)	60
24234	2 1/8 (54)	2.52 (64)	60
24236	2 1/4 (57)	2.64 (67)	60
24238	2 3/8 (60)	2.77 (70)	60
24240	2 1/2 (64)	2.89 (74)	60
24242	2 5/8 (67)	3.02 (77)	60

PART NO.	I.D. INCHES (MM)	O.D. INCHES (MM)	WORK PRESS. (PSI)
24244	2 3/4 (70)	3.14 (80)	60
24246	2 7/8 (73)	3.27 (83)	55
24248	3 (76)	3.39 (86)	25
24250	3 1/8 (79)	3.52 (89)	25
24252	3 1/4 (82)	3.64 (92)	20
24256	3 1/2 (89)	3.89 (99)	18
24260	3 3/4 (95)	4.14 (105)	18
24264	4 (101)	4.39 (111)	12
24272	4 1/2 (114)	4.92 (125)	12

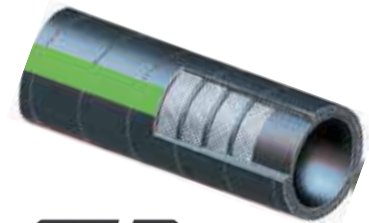




 **GREEN STRIPE™ 4-PLY COOLANT HOSE**

For severe operating conditions found on stationary engines, construction equipment and off-road vehicle applications. Nitrile tube specially compounded to handle common coolants and additives.

- Four-ply woven, heavy-duty fabric reinforcement.
- Neoprene cover resists heat, abrasion and oil.
- Handles higher temperatures and resists petroleum additives.
- Exceeds SAE 20R1 (Class B Tube, Class C Cover, Heavy Wall).
- Reduces water loss from water permeating the hose wall and cover, a distinct advantage over silicone.
- Engineered to resist electrochemical degradation - the leading cause of hose failure.
- Temperature rating: -40°F to +212°F (-40°C to +100°C), intermittent to +257°F (+125°C).
- Packaging: Available in 3 ft. lengths.



**Caution:** Do not use for gasoline or diesel transfer applications.

PART NO.	I.D. INCHES (MM)	O.D. INCHES (MM)	WORK PRESS. (PSI)
24428	1 3/4 (44)	2.31 (59)	100
24430	1 7/8 (48)	2.43 (62)	100
24432	2 (51)	2.56 (65)	90
24434	2 1/8 (54)	2.68 (68)	90
24436	2 1/4 (57)	2.81 (71)	90
24438	2 3/8 (60)	2.94 (74)	90
24440	2 1/2 (64)	3.06 (78)	75
24442	2 5/8 (67)	3.18 (81)	75
24444	2 3/4 (70)	3.31 (84)	60
24446	2 7/8 (73)	3.43 (87)	60
24448	3 (76)	3.56 (90)	60
24450	3 1/8 (79)	3.68 (94)	60
24452	3 1/4 (82)	3.81 (97)	50
24456	3 1/2 (89)	4.06 (103)	50
24458	3 5/8 (92)	4.18 (106)	50
24460	3 3/4 (95)	4.31 (109)	50
24464	4 (101)	4.56 (116)	40
24480	5 (127)	5.56 (141)	40



 **GREEN STRIPE™ VULCO-FLEX™ COOLANT HOSE**

Heavy-duty flexible hose designed to replace straight or curved coolant hoses. The benefit is maximum coverage with minimum inventory. Hose inside diameter remains constant from end to end. No convolutions inside hose so tube is smooth, allowing free coolant flow. Approved for marine applications.



- Excellent flexibility, yet collapse and kink resistant.
- Extra strength fabric reinforcement with helical steel wire spiral moulded between tube and cover.
- Heat-resistant construction throughout.
- EPDM tube and neoprene cover for extended service life.
- Performs to SAE 20R5 Type EC Class D-2 specifications.
- Engineered to resist electrochemical degradation – the leading cause of hose failure.
- Temperature rating: -40°F to +257°F (-40°C to +125°C).
- Working pressure 40 psi maximum.

**Caution:** Do not use for fuel or oil transfer applications.

PART NO.	I.D. INCHES (MM)	LENGTH INCHES (MM)
26501	1 3/4 (44)	1 32/2 (343)
26502	1 3/4 (44)	16 1/2 (419)
26503	1 3/4 (44), 2 (51)	10 (254)
26504	1 3/4 (44), 2 (51)	16 1/2 (419)
26505	1 3/4 (44), 2 (51)	19 (483)
26506	1 3/4 (44), 2 (51)	23 1/2 (597)
26507	2 (51)	9 1/2 (241)
26508	2 (51)	12 1/4 (311)
26509	2 (51)	14 1/2 (368)
26510	2 (51)	17 (432)
26511	2 (51)	20 (508)
26512	2 (51)	24 (610)
26513	2 (51)	33 (838)
26514	2 (51), 2 1/4 (57)	8 1/2 (216)

PART NO.	I.D. INCHES (MM)	LENGTH INCHES (MM)
26515	2 (51), 2 1/4 (57)	15 (381)
26523	2 1/4 (57)	19 (483)
26524	2 1/4 (57)	24 (610)
26525	2 1/4 (57)	27 (686)
26526	2 1/4 (57), 2 1/2 (64)	18 (457)
26527	2 1/4 (57), 2 1/2 (64)	21 (533)
26528	2 1/4 (57), 2 1/2 (64)	25 (635)
26529	2 1/2 (64)	11 (279)
26516	2 (51), 2 1/4 (57)	17 1/2 (445)
26517	2 (51), 2 1/4 (57)	25 (635)
26518	2 (51), 2 1/2 (64)	20 (508)
26519	2 1/4 (57)	9 (229)

PART NO.	I.D. INCHES (MM)	LENGTH INCHES (MM)
26520	2 1/4 (57)	11 (279)
26521	2 1/4 (57)	14 (356)
26522	2 1/4 (57)	17 (432)
26530	2 1/2 (64)	14 (356)
26531	2 1/2 (64)	16 (406)
26532	2 1/2 (64)	24 (610)
26533	2 1/2 (64)	28 (711)
26534	2 3/4 (70)	7 (178)
26535	2 3/4 (70)	14 (356)
26536	2 3/4 (70)	18 (457)
26537	2 3/4 (70)	32 (813)
26538	3 (76)	37 (940)
26601	1 3/4 (44)	6 (152)
26602	1 3/4 (44)	8 1/2 (216)
26603	1 3/4 (44)	11 (279)
26611	1 3/4 (44)	19 (483)
26612	1 3/4 (44)	23 1/2 (597)



**WIRE-INSERTED GREEN STRIPE™ COOLANT HOSE**

Provides the ability to replace many sizes of tailor-made curved hoses. Results in maximum coverage with minimum inventory. Approved for marine applications.

- Heavy-duty fabric reinforcement with helical carbon steel wire.
- Bends easily to make curved connections.
- Cuts easily with knife and wire cutters to reduce installation time.
- Exceeds SAE 20R2 Type EC (Class D2 Tube and cover) except in vacuum applications.
- Engineered to resist electrochemical degradation – the leading cause of hose failure.
- Temperature rating: -40°F to +257°F (-40°C to +125°C).



**Note:** Long spans must be supported every 3 feet.

**Caution:** Do not use for fuel or oil transfer applications.

PART NO. 5 FOOT	PART NO. 10 FOOT	I.D. (IN.)	I.D. (MM)	O.D. (IN.)	O.D. (MM)	WORK PRESS. (PSI)	VACUUM (IN. /HG.)	MIN. BEND RADIUS (IN.)	MIN. BEND RADIUS (MM)
24916	28316	1	25	1.46	37	100	25	2	51
24918	—	1 1/8	29	1.58	40	100	25	2 1/2	64
24920	28320	1 1/4	32	1.71	43	100	25	2 1/2	64
24922	—	1 3/8	35	1.83	46	85	25	3	76
24924	28324	1 1/2	38	1.96	50	85	20	3 1/2	89
24926	28326	1 5/8	41	2.08	53	75	20	3 1/2	89
24928	28328	1 3/4	44	2.21	56	75	20	4	101
24930	28330	1 7/8	48	2.33	59	60	20	4 1/2	114
24932	28332	2	51	2.46	62	60	20	4 1/2	114
24934	—	2 1/8	54	2.58	65	55	20	5 1/2	140
24936	28336	2 1/4	57	2.71	69	55	20	5 1/2	140
24938	—	2 3/8	60	2.83	72	50	20	6 1/2	165
24940	28340	2 1/2	64	2.96	75	50	20	6 1/2	165
24942	—	2 5/8	67	3.08	78	40	15	7 1/2	190
24944	28344	2 3/4	70	3.21	81	40	15	7 1/2	190
24946	—	2 7/8	73	3.33	84	40	15	9	228
24948	28348	3	76	3.43	87	40	15	9	228
24956	28356	3 1/2	89	3.93	100	35	15	12	304
24964	—	4	101	4.43	112	30	10	20	508
24980	—	5	127	5.43	138	15	5	24	609
24996	—	6	152	6.43	163	15	5	30	762

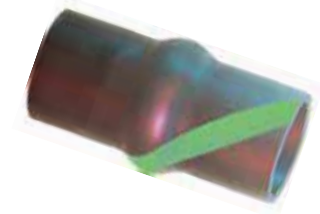
**NOTE:** Long spans must be supported every 3 feet.



## GREEN STRIPE™ VIBRAFLEX™ COOLANT HOSE

For heavy-duty applications requiring short length hose that must absorb vibration and/or fitting misalignment. High flexibility reduces installation time and provides lower cost-per-km operation.

- Oil and heat-resistant nitrile tube.
- Oil, abrasion and heat-resistant neoprene cover.
- Exceeds SAE J20 (Class B Tube and Class C Cover).
- Two-ply fabric reinforced.
- Temperature rating: -40°F to +212°F (-40°C to +100°C).



**ECR**  
ELECTROCHEMICAL  
RESISTANT

**Caution:** Do not use for gasoline or diesel transfer applications.

PART NO.	I.D. (IN.)	I.D. (MM)	WORK PRESS. (PSI)
23505	1 1/4 x 4	32 x 101	70
23511	1 3/8 x 5	35 x 127	60
23515	1 1/2 x 5	38 x 127	60
23520	1 3/4 x 5	44 x 127	55
23531	2 x 3 1/2	51 x 89	50
23533	2 x 5	51 x 127	50
23547	2 1/4 x 4 1/2	57 x 114	40
23557	2 3/8 x 5	60 x 127	35
23559	2 3/8 x 6 1/4	60 x 158	35
23562	2 1/2 x 4 1/2	64 x 114	35
23550	2 1/2 x 6	64 x 152	35
23566	2 3/4 x 3 1/4	70 x 82	30
23567	2 3/4 x 4 1/2	70 x 114	30
23568	2 3/4 x 5 3/8	70 x 136	30
23572	3 x 4	76 x 101	25
23575	3 x 7	76 x 177	25
23585	3 1/2 x 5 1/2	89 x 140	25



## SILICONE COOLANT HOSE

Extra long-lasting hose constructed with silicone rubber. Ideal for extremely high temperature service in radiator, heater and other coolant transfer hose applications.

- Excellent for extreme ambient and radiant temperature conditions.
- Resists weathering, ozone, heat and coolant deterioration.
- Silicone tube and cover resist prolonged exposure to under-hood and coolant heat.
- Use PowerGrip™ SB clamps or silicone hose clamps.
- Exceeds SAE 20R1 (Class A Standard Wall).
- Temperature rating: -70°F to +350°F (-56°C to +177°C).
- Packaging: Available in 3 ft. lengths.



**Caution:** Do not use for fuel or oil transfer applications.

PART NO.	I.D. (IN.)	I.D. (MM)	WORK PRESS. (PSI)
24806	1/4	6.3	159
24807	3/8	9.5	159
24808	1/2	12.7	110
24810	5/8	16	110
24812	3/4	19	110
24814	7/8	22	110
24816	1	25	90
24817	1 1/16	27	90
24818	1 1/8	29	90
24820	1 1/4	32	85
24821	1 5/16	33	85
24822	1 3/8	35	85
24824	1 1/2	38	85
24826	1 5/8	41	80
24828	1 3/4	44	80
24829	1 7/8	48	80
24832	2	51	75
24833	2 1/8	54	75

PART NO.	I.D. (IN.)	I.D. (MM)	WORK PRESS. (PSI)
24836	2 1/4	57	75
24838	2 3/8	60	65
24840	2 1/2	64	65
24841	2 5/8	67	65
24844	2 3/4	70	50
24845	2 7/8	73	50
24848	3	76	50
24850	3 1/8	79	40
24852	3 1/4	82	40
24853	3 3/8	86	40
24856	3 1/2	89	40
24860	3 3/4	95	40
24864	4	101	35
24872	4 1/2	114	25
24878	5	127	15
24880	5 1/2	140	15
24882	6	152	15



 **SEVERE SERVICE SILICONE COOLANT HOSE**

Newer heavy-duty engines with advanced emission systems (from 2007 to current model year) produce higher under-hood temperatures, requiring the use of silicone coolant hose. In these new low engine-air-flow and high-heat conditions, Gates Silicone Coolant Hose is the perfect product.

Gates now offers high-quality 4-ply Silicone coolant hose for high-heat (up to 260°C) performance in these demanding conditions.

- Premium 4-ply construction.
- High-heat resistance material meets or exceeds OE specifications.
- Industry standard blue cover for easy identification.
- Used when hose routing passes near turbo or hot side of the charged air system.
- Temperature rating: -53.9°C to +260°C (-65 to +500°F).
- Packaging: Available in 3 ft. lengths.



**Caution:** Do not use for fuel or oil transfer applications.

PART NO.	I.D. (IN.)	I.D. (MM)	WORK PRESS. (PSI)
28225	1	25	90
28226	1 1/4	32	85
28227	1 1/2	38	85

PART NO.	I.D. (IN.)	I.D. (MM)	WORK PRESS. (PSI)
28228	1 3/4	44	80
28229	2	51	75
28230	2 1/4	57	75

PART NO.	I.D. (IN.)	I.D. (MM)	WORK PRESS. (PSI)
28231	2 1/2	64	65
28232	2 3/4	70	50
28233	3	77	50

 **MOULDED SILICONE COOLANT HOSE**

Heavy-duty engines with advanced emissions systems (from 2007 to current model year) produce higher under-hood temperatures, requiring the use of silicone coolant hose. In these low engine-air-flow and high-heat conditions, Gates Silicone Coolant Hose is the perfect product.

- Premium 4-ply construction.
- High-heat resistance material meets or exceeds OE specifications.
- Industry standard blue cover for easy identification.
- Used when hose routing passes near turbo or hot side of the charged air system.
- Arm length 6" (152mm).



45° ELBOW HOSE		
PART NO.	I.D. (IN.)	I.D. (MM)
28205	1 3/4	44
28206	2	51
28207	2 1/4	57
28200	2 1/2	64
28201	2 3/4	70
28202	3	76
28203	3 1/2	89
28204	4	101

90° ELBOW HOSE		
PART NO.	I.D. (IN.)	I.D. (MM)
28217	1 3/4	44
28210	2	51
28211	2 1/4	57
28212	2 1/2	64
28213	2 3/4	70
28214	3	76
28215	3 1/2	89
28216	4	101



# HEATER HOSE

## 90° MOULDED HEATER HOSE

Especially designed for difficult heater hose applications requiring sharp 90° bends in the hose. Eliminates the need for extensive inventory of OE type curved heater hose.

- Engineered to resist electrochemical degradation – the leading cause of hose failure.
- Resists water permeation.
- Similar to heater SAE 20R3 Type EC Class D-2.
- Use with heater hose connectors and bulk heater hose for virtually complete moulded heater hose coverage.
- Temperature rating: -40°F to +275°F (-40°C to +135°C).



**Caution:** Do not use for fuel or oil transfer applications.

PART NO.	I.D. (IN.)	I.D. (MM)	ARM LENGTH 1 (MM)	ARM LENGTH 2 (MM)	PART NO.	I.D. (IN.)	I.D. (MM)	ARM LENGTH 1 (MM)	ARM LENGTH 2 (MM)
02-0145	1/4	6.35	102	152	02-0284	3/4	19	102	152
02-0637	1/4	6.35	102	305	02-0286	3/4	19	102	457
03-0001	1/4	6.35	300	300	28479	3/4	19	102	914
02-0146	5/16	7.9	102	152	03-0008	3/4	19	125	125
02-0407	5/16	7.9	102	305	03-0009	3/4	19	300	300
03-0002	5/16	7.9	300	300	03-0010	1	25.4	125	125
02-0418	3/8	9.5	102	152	03-0011	1	25.4	300	300
03-0003	3/8	9.5	300	300	03-0012	1 1/4	32	150	150
02-0453	1/2	12.7	102	152	03-0013	1 1/4	32	300	300
02-0181	1/2	12.7	102	305	03-0014	1 1/2	38	150	150
03-0004	1/2	12.7	110	110	03-0015	1 1/2	38	300	300
03-0005	1/2	12.7	300	300	03-0016	1 3/4	44	180	180
02-0278	5/8	15.9	102	152	03-0017	1 3/4	44	175	325
02-0281	5/8	15.9	102	305	03-0018	2	50	200	200
02-0183	5/8	15.9	203	457	03-0019	2	50	300	500
28472	5/8	15.9	102	1219	03-0020	2 1/4	57	170	170
03-0006	5/8	15.9	100	100	03-0021	2 1/4	57	310	310
03-0007	5/8	15.9	300	300					

## MOULDED HEATER HOSE

Specially designed, OEM style factory-moulded hose to fit today's smaller, tighter-fitting engine compartments with inside diameters up to 1 inch. Oil, abrasion and heat-resistant neoprene cover.

- Exceeds SAE J20 (Class B Tube and Class C Cover).
- Similar to OEM specifications.
- Has all the quality features of regular coolant hose.
- Temperature rating: -40°F to +257°F (-40°C to +125°C).



**RECOMMENDATION:** replace standard worm drive and spring loaded clamps with thermoplastic clamps each time a new coolant hose is installed.

**Caution:** Do not use for fuel or oil transfer applications.



 **FIREWALL™ HEATER HOSE**

Extra heavy-duty hose designed for maximum durability. Easily recognised by its red cover.

- Unaffected by most coolants and non-oil based coolant additives.
- Unaffected by high cooling system pressures.
- Good resistance to high temperatures for extended periods of time.
- Similar to SAE 20R3 Class D-2.
- Temperature rating: -40°F to +257°F (-40°C to +125°C).



**Caution:** Do not use for fuel or oil transfer applications.

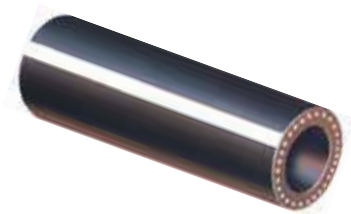
PART NO.	I.D. (IN.)	I.D. (MM)	O.D. (IN.)	LENGTH (FT.)	WORK PRESS. (PSI)
28430	1/2	12.7	.77	50	60
28431	5/8	15.9	.89	50	60
28432	3/4	19.0	1.02	50	50

PART NO.	I.D. (IN.)	I.D. (MM)	O.D. (IN.)	LENGTH (FT.)	WORK PRESS. (PSI)
28433	5/8	15.9	.89	250	60
28434	3/4	19.0	1.02	250	50

 **SAFETY STRIPE™ HEATER HOSE**

EPDM hose constructed for extra-long service life.

- Unaffected by most coolants and non-oil based coolant additives.
- Unaffected by high cooling system pressures.
- Good resistance to high temperatures for extended periods of time.
- Similar to SAE 20R3 Class D-2.
- Not recommended for heavy-duty truck, bus and off-road construction equipment; use Green Stripe™ heater hose for these applications.
- Temperature rating: -40°F to +257°F (-40°C to +125°C).



**Caution:** Do not use for fuel or oil transfer applications.

PART NO.	I.D. (IN.)	I.D. (MM)	O.D. (IN.)	LENGTH (FT.)	WORK PRESS. (PSI)
28407	1/4	6.3	.50	50	60
28408	5/16	7.9	.62	50	60
28409	3/8	9.5	.69	50	60
28410	1/2	12.7	.77	50	60
28411	5/8	15.9	.89	50	60

PART NO.	I.D. (IN.)	I.D. (MM)	O.D. (IN.)	LENGTH (FT.)	WORK PRESS. (PSI)
28417	5/8	15.9	.89	250 (reel)	60
28412	3/4	19.0	1.02	50	50
28418	3/4	19.0	1.02	250 (reel)	50
28413	1	25.4	1.34	50	45
28420	1	25.0	1.34	25	45





  **POLYBAGGED SAFETY STRIPE™ HEATER HOSE**

Ideal self-service package for retail-oriented merchandising.  
Fits standard pegboard displays.

- Package measures 12" wide x 13" high.
- Hose comes in 6 ft. lengths of Gates Safety Stripe™ heater hose in 3/8", 1/2", 5/8" and 3/4" I.D.



PART NO.	I.D. (IN.)	I.D. (MM)	O.D. (IN.)
28489	3/8	9.5	.69
28490	1/2	12.7	.77
28491	5/8	15.9	.89
28492	3/4	15.9	1.02

  **CHARTER™ HEATER HOSE**

Economically priced heater hose – yet affords long service life.  
Tested by Gates to assure reliability.

- Good resistance to high temperatures.
- Moderate resistance to oil and grease contamination.
- Good resistance to non-oil based coolant additives.
- Similar to SAE 20R3 Class D-2.
- Temperature rating: -40°F to +257°F (-40°C to +125°C).



**Caution:** Do not use for fuel or oil transfer applications.

PART NO.	I.D. (IN.)	I.D. (MM)	O.D. (IN.)	LENGTH (FT.)	LENGTH (MTR.)	WORK PRESS. (PSI)	PART NO.	I.D. (IN.)	I.D. (MM)	O.D. (IN.)	LENGTH (FT.)	LENGTH (MTR.)	WORK PRESS. (PSI)
28400	1/2	12.7	.77	50	15	60	28404	5/8	15.9	.89	250	76	60
28403	1/2	12.7	.77	250	76	60	28402	3/4	19.0	1.02	50	15	50
28401	5/8	15.9	.89	50	15	60	28405	3/4	19.0	1.02	250	76	50

 **HEATER VALVES**

Gates heater valves control the volume flow of water to the heater element. The heater valve consists of inlet and outlet connections together with a control valve that is normally vacuum operated.

Gates range covers Ford Falcons and Holden Commodores as well as a universal valve. There are also two metal sleeve joiners in the range.





 **HEATER VALVE & HOSE ASSEMBLIES**

The Gates heater valve and hose assemblies come complete and pre assembled. All clamps are provided to allow for quick and easy installation.

- Comes complete with heater valve.
- Contain Gates moulded electrochemical resistant heater hoses.
- Temperature Rating: -40°C to +135°C



**Caution:** Do not use for fuel or oil transfer applications.

 **SILICONE HEATER HOSE**

Constructed with silicone rubber. Ideal for extremely high temperature service in radiator, heater and other coolant transfer hose applications. Approved for marine applications.

- Reinforced with tough, high temperature resistant polyester textile cords.
- Exceptionally flexible.
- Highly resistant to weathering, coolant deterioration, ozone and temperature extremes.
- Exceeds SAE 20R3 Class A Tube and Cover.
- Can be used for emission hose applications.
- For proper installation, use Gates PowerGrip™ SB clamps or Gates silicone hose clamps.
- Temperature rating: -70°F to +400°F (-57°C to +204°C).



**Caution:** Do not use for fuel or oil transfer applications.

PART NO.	I.D. (IN.)	I.D. (MM.)	LENGTH (FT.)	LENGTH (MTR.)	WORK PRESS. (PSI)
26239	3/8	9.5	25	7.6	60
26240	1/2	12.7	25	7.6	60
26241	5/8	16	25	7.6	60

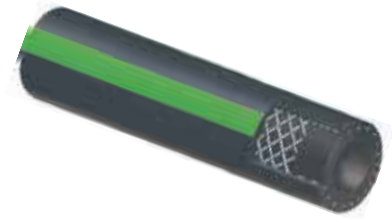
PART NO.	I.D. (IN.)	I.D. (MM.)	LENGTH (FT.)	LENGTH (MTR.)	WORK PRESS. (PSI)
26242	3/4	19	25	7.6	50
26244	1	25.4	25	7.6	45
26243	3/4	19	100	30	50



  **GREEN STRIPE™ HEATER HOSE**

Heavy-duty construction assures dependable operation in truck, bus and off-road equipment heater systems. For a maintenance free connection, install with PowerGrip™ SB clamps. Approved for marine applications.

- Green Stripe construction provides best cost-per-km economics.
- Cover is abrasion resistant.
- Advanced EPDM tube, cover and reinforcement withstand high under-hood and coolant temperatures. Designed for extended use without cracking or hardening.
- Engineered to resist electrochemical degradation – the leading cause of hose failure.
- Exceeds SAE 20R1 Type EC, Standard Wall Class D-1.
- Reduces water loss from water permeating the hose wall and cover, a distinct advantage over silicone.
- Temperature rating: -40°F to +275°F (-40°C to +135°C).



**Caution:** Do not use for fuel or oil transfer applications.

PART NO.	I.D. (IN.)	I.D. (MM)	LENGTH (FT.)	LENGTH (MTR.)	WORK PRESS. (PSI)
28439	1/2	12.7	50	15	105
28441	5/8	16	50	15	95
28442	3/4	19	50	15	80
28443	7/8	22	50	15	80
28444	1	25.4	50	15	75

PART NO.	I.D. (IN.)	I.D. (MM)	LENGTH (FT.)	LENGTH (MTR.)	WORK PRESS. (PSI)
28445	1 1/4	32	50	15	70
28440	1/2	12.7	300	91	105
28447	5/8	16	300	91	95
28448	3/4	19	300	91	80
28449	1	25.4	300	91	75

 **ELECTRIC HEATER VALVES**

Made out of high-quality resins and corrosion resistant metal, these valves undergo rigorous testing and inspections ensuring you a premium aftermarket product.

- Plastic outlets made of 100% virgin resins.
- Metal components designed to resist corrosion.
- Mounting brackets included as needed.
- All assemblies are 100% leak tested.
- All valves are hand-inspected to ensure highest-quality.
- High/low temperature testing, thermal shock testing and salt spray testing all greatly surpass actual operating conditions.





# COOLANT SYSTEM - COMPONENTS



## HOSE I.D. REDUCERS

Slip inside current Gates hose to reduce inside diameters, providing maximum coverage with minimum hose inventory. Make it possible to adjust inside diameters of larger hoses for emergency replacements.

- Quality rubber construction assures maximum dependability, no leakage.
- Fits Green Stripe™ straight or Green Stripe™ Vulco-Flex™ hoses.



**Caution:** Recommended for coolant and air applications only.

PART NO.	SIZE (IN.)	SIZE (MM)
26390	1 1/2 to 1 1/4	38.1 to 31.8
26391	1 3/4 to 1 1/2	44.5 to 38.1
26392	2 to 1 3/4	50.8 to 33.9
26393	2 1/4 to 2	57.1 to 50.8
26394	2 1/2 to 2 1/4	63.5 to 57.1
26395	3 to 2 1/2	56.2 to 63.5



## HEATER HOSE QUICK-LOK™ CONNECTORS

Quick-Lok connectors provide a fast, easy way to connect replacement heater hose assemblies on cars and light trucks. The design retains O-rings so they cannot fall out or get damaged.

STRAIGHT CONNECTORS		
PART NO.	O.D. (IN.)	O.D. (MM)
28500	5/8	15.9
28501	3/4	19.1
28502	3/4	19.1



ELBOW CONNECTORS		
PART NO.	O.D. (IN.)	O.D. (MM)
28503	5/8	15.9
28504	3/4	19.1
28505	3/4	19.1





  **PLASTIC HEATER HOSE AND FUEL LINE CONNECTORS**

Unique single-barb design provides greater sealability between single or dual inside diameter hoses. Fuel Hose Connector Kit Part No. 91174. Reducer Connector Assortment Kit Part No. 91177.

- Almost any hose configuration can be constructed using straight, elbow and tee shapes.
- Glass reinforced nylon resists chemicals, gasoline, diesel fuels and temperatures from -40 °F to +480 °F (-40 °C to +250 °C).
- Bulkheads assure proper insertion depths.
- Anti-rotation device prevents hose twisting.
- Packaging: 5 per package, except 1" which is 2 per package.



STRAIGHT CONNECTORS		
PART NO.	O.D. (IN.)	O.D. (MM)
28561	3/32	2.4
28562	1/8	3.2
28563	5/32	4.0
28564	3/16	4.8
28601	1/4	6.3
28600	5/16	8.0
28602	3/8	9.5
28603	1/2	12.7
28604	5/8	15.9
28605	3/4	19.0
28606	1	25.4

ELBOW CONNECTORS		
PART NO.	O.D. (IN.)	O.D. (MM)
28571	3/32	2.4
28572	1/8	3.2
28573	5/32	4.0
28574	3/16	4.8
28621	3/4	6.3
28620	5/16	8.0
28622	3/8	9.5
28623	1/2	12.7
28624	5/8	15.9
28625	3/4	19.0
28626	1	25.4

TEE CONNECTORS		
PART NO.	O.D. (IN.)	O.D. (MM)
28581	3/32	2.4
28582	1/8	3.2
28583	5/32	4.0
28584	3/16	4.8
28631	1/4	6.3
28630	5/16	8.0
28632	3/8	9.5
28633	1/2	12.7
28634	5/8	15.9
28635	3/4	19.0
28638	1	25.4

REDUCER CONNECTORS		
PART NO.	O.D. (IN.)	O.D. (MM)
28591	3/32 to 1/8	2.4 to 3.2
28592	1/8 to 5/32	3.2 to 4.0
28593	3/16 to 1/4	4.8 to 6.7
28594	5/16 to 3/8	7.9 to 9.5
28609	3/8 to 1/2	9.5 to 12.7
28610	1/2 to 5/8	12.7 to 15.9
28611	5/8 to 3/4	15.9 to 19.0
28612	3/4 to 1	19.0 to 25.4

TEE REDUCER CONNECTORS						
PART NO.	END 1		90° TEE		END 2	
	O.D. (IN.)	O.D. (MM)	O.D. (IN.)	O.D. (MM)	O.D. (IN.)	O.D. (MM)
28636	5/8	15.9	3/8	9.5	5/8	15.9
28637	3/4	19.0	3/8	9.5	3/4	19.0

"Y" CONNECTORS		
PART NO.	O.D. (IN.)	O.D. (MM)
28551	3/32	2.4
28552	1/8	3.2
28554	3/16	4.8



# CLAMP SELECTION GUIDE

	SMALL DIAMETER CLAMPS			PERFORATED BAND CLAMPS		NON - PERFORATED BAND CLAMPS		EMBOSSSED BAND CLAMP		T-BOLT CLAMPS			HIGH PERFORMANCE WORM DRIVE CLAMPS	LINED CLAMPS		QUICK RELEASE	FLEX GEAR	
	62M	62P	52F	57	67-5	539	531	53	54/55	31	32	33	6M	65E	62K	58	47	
<b>AUTOMOTIVE</b>																		
Emission Control	•	•	•														•	
Fuel Lines	•			•													•	
Fuel Injection	•			•													•	
Vacuum Tubing		•															•	
Radiator Hose				•	•	•	•						•					
Heater Hose				•	•								•					
<b>HEAVY-DUTY</b>																		
Exhaust											•	•						
Air Duct											•	•	•				•	
Radiator Hose											•	•	•				•	
Turbo Hose											•	•		•			•	
<b>MARINE</b>																		
Boating applications	•				•			•				•	•	•				
<b>INDUSTRY</b>																		
Plumbing								•	•	•	•	•	•				•	
Industrial Machinery								•	•		•	•	•				•	
Heavy-Duty Industry								•			•	•	•	•				
Farm Equipment					•			•				•	•					
Off-road Equipment					•			•				•	•					
General hose piping & tubing								•	•	•	•	•		•				
Corrosive Environments					•			•				•	•					
Repeated opening & closing																	•	
Applic. subject to temp changes																		•
<b>DOMESTIC</b>																		
General Home Repair		•		•						•	•	•					•	
	Used for small diameter hose applications. Easy to install in confined areas.	Suitable for most common home, hardware, plumbing and automotive repairs.					Suitable for soft hose applications. The solid band rolled edge offers increased protection on the exterior wall of the hose.	Designed for high pressure hose applications.	A worm drive clamp specially designed for high pressure applications.	Specially for use with silicone rubber or other soft hose applications. The extended band or liner protects the hose surface and prevents it from extruding or shearing through the band notches as the clamp is tightened.	Designed for applications where the clamp is repeatedly open and closed.	Suitable for hose that are subject to temperature changes.						



# HOSE CLAMPS AUTOMOTIVE

## SMALL DIAMETER CLAMPS

### Micro-Gear™ Clamps

Micro-Gear™ clamps are tiny, tough and precision engineered for use in such small hose applications as emission control, fuel lines and vacuum hoses. Their slim, 5/16" (8mm) band and low profile housing make them easy to install in confined areas.

#### Ideal 62P Series

Screw: 1/4" (6mm) hex-head.  
Plated carbon steel.  
Band and housing: 5/16" (8mm) design.  
201/301 stainless steel.

#### Ideal 62M Series

Screw: 1/4" (6mm) high-nickel grade stainless steel.  
Band and housing: 5/16" (8mm) design.  
High-nickel grade stainless steel.



MICRO GEAR CLAMP					CLAMPING RANGE					
SAE SIZES	IDEAL PART NO.	IDEAL PART NO.	BULK PART NO.	BULK PACK QUANTITY	IN.		MM		FITS HOSE I.D.	
					Min.Dia.	Max.Dia.	Min.Dia.	Max.Dia.	Min.Dia.	Max.Dia.
	62P	62M	62M Bulk							
4	6204	62604	62604B	1000	1/4	5/8	6	16	1/8	5/16
5	6205	62605	62605B	1000	1/4	11/16	7	17	1/8	3/8
6	6206	62606	62606B	1000	5/16	7/8	8	22	1/4	7/16
8	6208	62608	62608B	500	3/8	1	10	25	5/16	1/2
10	6210	62610	62610B	500	3/8	1 1/16	10	27	5/16	5/8
12	6212	62612	62612B	500	1/2	1 1/4	13	32	5/8	3/4
16	6216	62616	62616B	500	1/2	1 1/2	13	38	5/8	1

STANDARD PACK SIZE - BOXES OF 10

## FUEL INJECTION CLAMPS

Fuel injection system clamps are designed to provide the uniform sealing pressure required on fuel injection hose. They feature non-perforated rolled-edge bands with a special nut and bolt-tightening design. They provide safe and uniform sealing pressure required by high pressure EFI fuel hose applications.



NUT AND BOLT FUEL INJECTION CLAMP BAND: 9MM ZINC-PLATED CARBON STEEL SCREW: 7MM HEX- HEAD ZINC-PLATED CARBON STEEL	
IDEAL PART NUMBER	CLAMPING RANGE
52F9	IDEAL 52F9 EFI CLAMP 7-9MM BX10
52F11	IDEAL 52F11 EFI CLAMP 9-11MM BX10
52F12	IDEAL 52F12 EFI CLAMP 10-12MM BX10
52F13	IDEAL 52F13 EFI CLAMP 11-13MM BX10
52F14	IDEAL 52F14 EFI CLAMP 12-14MM BX10
52F15	IDEAL 52F15 EFI CLAMP 13-15MM BX10
52F16	IDEAL 52F16 EFI CLAMP 14-16MM BX10

### Ideal 52F Series

Screw: 7mm hex-head.  
Zinc-plated, clear chromate, carbon steel.  
Band: 9mm width.  
Zinc-plated, clear chromate, carbon steel.



## 1/2" BAND CLAMPS

1/2" (12mm) band clamps are suitable for most common home and automotive applications.

### Ideal 57 Series

Screw: 5/16" (8mm) hex-head.  
Plated carbon steel.  
Band and housing: 1/2" (12mm) design.  
201/301 stainless steel.

### Ideal 67-5 Series

Screw: 5/16" (8mm) hex-head.  
High-nickel grade stainless steel.  
Band and housing: 1/2" (12mm) design.  
High-nickel grade stainless steel.



1/2" BAND CLAMPS			CLAMPLING RANGE					
SAE SIZES	IDEAL PART NO.	IDEAL PART NO.	IN.		MM		FITS HOSE I.D.	
			Min.Dia.	Max.Dia.	Min.Dia.	Max.Dia.	Min.Dia.	Max.Dia.
	57	67-5						
6	5706	6706	3/8	7/8	10	22	5/16	3/8
8	5708	6708	7/16	1	11	25	5/16	1/2
10	5710	6710	1/2	1 1/16	13	27	3/8	5/8
12	5712	6712	1/2	1 1/4	13	32	3/8	3/4
16	5716	6716	11/16	1 1/2	18	38	3/4	7/8
20	5720	6720	3/4	1 3/4	19	44	3/4	1 1/8
24	5724	6724	1	2	25	51	7/8	1 3/8
28	5728	6728	1 1/4	2 1/4	32	57	1 1/4	1 5/8
32	5732	6732	1 1/2	2 1/2	38	63	1 1/2	1 7/8
36	5736	6736	1 3/4	2 3/4	44	70	1 3/4	2
40	5740	6740	2	3	51	76	2	2 1/4
44	5744	6744	2 1/4	3 1/4	57	82	2 1/4	2 1/2
48	5748	6748	2 1/2	3 1/2	64	89	2 1/2	2 3/4
52	5752	6752	2 3/4	3 3/4	70	95	2 3/4	3
56	5756	6756	3	4	76	101	3	3 1/2
60	5760	6760	3 1/4	4 1/4	83	108	3 1/4	3 1/2
64	5764	6764	2 1/2	4 1/2	64	114	2 1/2	4
72	5772	6772	3	5	76	127	3	4 1/2
80	5780	6780	3 1/2	5 1/2	89	140	3 1/2	5
88	5788	6788	4	6	102	152	4	5 1/2
96	5796	6796	4 1/2	6 1/2	114	165	4 1/2	6

STANDARD PACK SIZE - BOXES OF 10





# HOSE CLAMPS AUTOMOTIVE & INDUSTRIAL

## NON-PERFORATED BAND CLAMPS

Preferred by the European original equipment and replacement markets, the non-perforated band protects silicone and other soft hose surfaces from extruding or shearing during installation. Available in 9mm and 12mm band widths in both all carbon steel and all stainless configurations.



### Ideal 53 Series (9mm Band Width)

All 300 grade stainless steel, non-perforated clamp design.  
Screw: 7mm hex-head. Slotted. 300 grade stainless steel.  
Band and housing: 9mm design. 300 grade stainless steel.

9mm BAND WIDTH NON-PERFORATED (EMBOSSED) CLAMPS								
IDEAL PART NO.	CLAMPING RANGE				FITS HOSE I.D.			
	IN.		MM		IN.		MM	
	Min.Dia.	Max.Dia.	Min.Dia.	Max.Dia.	Min.Dia.	Max.Dia.	Min.Dia.	Max.Dia.
5312	5/16	15/32	8	12	1/8	3/16	-	5
5320	1/2	25/32	12	20	5/16	1/2	7	10

PACKAGED IN BOXES OF 10

### Ideal 54 Series (12mm Band Width)

All 300 grade stainless steel, non-perforated clamp design.  
Screw: 7mm hex-head. Slotted. 300 grade stainless steel.  
Band and housing: 12mm design. 300 grade stainless steel.

### Ideal 55 Series (9mm Band Width)

Non-perforated clamp design.  
Screw: 7mm hex-head. Combination slot. Plated carbon steel.  
Band and housing: 9mm design. Plated carbon steel.  
Currently non stock, available upon request.

### Ideal 55 Series (12mm Band Width)

Non-perforated clamp design.  
Screw: 7mm hex-head. Combination slot. Plated carbon steel.  
Band and housing: 12mm design. Plated carbon steel.

12mm BAND WIDTH NON-PERFORATED (EMBOSSED) CLAMPS									
IDEAL PART NO.	IDEAL PART NO.	CLAMPING RANGE				FITS HOSE I.D.			
		IN.		MM		IN.		MM	
		Min.Dia.	Max.Dia.	Min.Dia.	Max.Dia.	Min.Dia.	Max.Dia.	Min.Dia.	Max.Dia.
5425	5525	21/32	31/32	16	25	1/2	5/8	9	16
5432	5532	25/32	11/4	20	32	5/8	7/8	13	22
5440	5540	1	1 9/16	25	40	3/4	1	19	29
5450	5550	1 1/4	1 31/32	32	50	1	1 3/8	25	38
5460	5560	1 19/32	2 11/32	40	60	1 1/4	1 3/4	32	44
5470	5570	1 31/32	2 3/4	50	70	1 5/8	2	41	57
5480	5580	2 3/8	3 1/8	60	80	2	2 1/2	51	64
5490	5590	2 3/4	3 1/2	70	90	2 1/2	3	64	76
54100	55100	3 1/8	3 15/16	80	100	3	3 1/2	76	83
54110	55110	3 9/16	4 5/16	90	110	3 1/4	3 3/4	83	89
54120	55120	3 15/16	4 23/32	100	120	3 1/2	4	89	102
54130	55130	4 5/16	5 1/8	110	130	4	4 1/2	102	114

PACKAGED IN BOXES OF 10



## POWERGRIP™ SB CLAMPS (SHRINKBAND CLAMPS)

Maintenance-free clamps that retain dynamic tension and never need retightening. These clamps stop leaks, even on out-of-round applications. Clamp down better in all conditions and temperature extremes. Environmentally friendly by eliminating antifreeze leaks and ground water contamination.

- Easy to install with ordinary heat gun.
- Wider sealing area entraps connector bead.
- Conform to any shape of hose and housing, even out-of-round fittings.
- Made from a heat-sensitive thermoplastic with a memory to prevent over- or under-tightening.
- Can be used with all brands of silicone hose.
- Temperature rating: -40 °F to +302 °F (-40 °C to +150 °C).
- Packaged in boxes of 10.



PART NO.	SIZE	NOMINAL HOSE I.D. (IN.)	NOMINAL HOSE I.D. (MM)	FITS HOSE O.D. (IN.)	FITS HOSE O.D. (MM)
32915	SB15	1/4	6	1/2 to 11/16	13 to 17
32919	SB19	3/8	10	11/16 to 13/16	17 to 21
32922	SB22	1/2	13	13/16 to 15/16	21 to 24
32925	SB25	5/8	16	15/16 to 1 1/16	24 to 27
32929	SB29	3/4	19	1 1/16 to 1 3/16	27 to 30
32932	SB32	7/8	22	1 3/16 to 1 5/16	30 to 33
32934	SB34	1	25	1 5/16 to 1 1/2	33 to 38
32941	SB41	1 1/4	32	1 1/2 to 1 3/4	38 to 44
32948	SB48	1 1/2	38	1 3/4 to 2	44 to 51
32954	SB54	1 3/4	44	2 to 2 1/4	51 to 57
32960	SB60	2	51	2 1/4 to 2 1/2	57 to 64
32967	SB67	2 1/4	57	2 1/2 to 2 3/4	64 to 70
32973	SB73	2 1/2	64	2 3/4 to 3	70 to 76
32979	SB79	2 3/4	70	3 to 3 1/4	76 to 83
32986	SB86	3	76	3 1/4 to 3 1/2	83 to 89
32990	SB90	3 1/8	79	3 1/2 to 3 5/8	89 to 92



# HOSE CLAMPS HEAVY-DUTY

## LINED CLAMPS



Lined clamps are specially designed for use with silicone rubber and other soft hose applications. The liner protects the hose surface and prevents it from extruding or shearing through the band notches as the clamp is tightened.

### Ideal 65E Series

Screw: 5/16" hex-head.  
 High-nickel grade stainless steel.  
 Band, liner and housing: 9/16"(14mm).  
 High-nickel grade stainless steel.



HOSE INSTALLED WITH UNLINED CLAMP



HOSE INSTALLED WITH LINED CLAMP

LINED CLAMPS		CLAMPLING RANGE					
SAE SIZES	IDEAL PART NO.	IN.		MM		FITS HOSE I.D.	
		Min.Dia.	Max.Dia.	Min.Dia.	Max.Dia.	Min.Dia.	Max.Dia.
	65E						
6	6506E	5/8	7 <sup>7</sup> / <sub>8</sub>	16	22	-	3/8
8	6508E	5/8	1	16	25	-	1/2
10	6510E	3/4	1 1 <sup>1</sup> / <sub>16</sub>	19	27	-	5/8
12	6512E	7/8	1 1 <sup>1</sup> / <sub>4</sub>	22	32	-	3/4
16	6516E	1	1 1 <sup>1</sup> / <sub>2</sub>	26	38	3/4	1
20	6520E	1 1 <sup>1</sup> / <sub>8</sub>	1 3 <sup>3</sup> / <sub>4</sub>	29	44	7/8	1 1 <sup>1</sup> / <sub>4</sub>
24	6524E	1 1 <sup>1</sup> / <sub>4</sub>	2	32	51	1	1 1 <sup>1</sup> / <sub>2</sub>
28	6528E	1 5 <sup>5</sup> / <sub>16</sub>	2 1 <sup>1</sup> / <sub>4</sub>	33	57	1 1 <sup>1</sup> / <sub>8</sub>	1 3 <sup>3</sup> / <sub>4</sub>
32	6532E	1 9 <sup>9</sup> / <sub>16</sub>	2 1 <sup>1</sup> / <sub>2</sub>	40	63	1 1 <sup>1</sup> / <sub>4</sub>	2
36	6536E	1 13 <sup>13</sup> / <sub>16</sub>	2 3 <sup>3</sup> / <sub>4</sub>	46	70	1 1 <sup>1</sup> / <sub>2</sub>	2 1 <sup>1</sup> / <sub>4</sub>
40	6540E	2 1 <sup>1</sup> / <sub>16</sub>	3	52	76	1 3 <sup>3</sup> / <sub>4</sub>	2 1 <sup>1</sup> / <sub>2</sub>
44	6544E	2 5 <sup>5</sup> / <sub>16</sub>	3 1 <sup>1</sup> / <sub>4</sub>	59	82	2 1 <sup>1</sup> / <sub>8</sub>	2 3 <sup>3</sup> / <sub>4</sub>
48	6548E	2 9 <sup>9</sup> / <sub>16</sub>	3 1 <sup>1</sup> / <sub>2</sub>	65	89	2 1 <sup>1</sup> / <sub>4</sub>	3
52	6552E	2 13 <sup>13</sup> / <sub>16</sub>	3 3 <sup>3</sup> / <sub>4</sub>	72	95	2 1 <sup>1</sup> / <sub>2</sub>	3 1 <sup>1</sup> / <sub>4</sub>
56	6556E	3 1 <sup>1</sup> / <sub>16</sub>	4	78	101	2 3 <sup>3</sup> / <sub>4</sub>	3 1 <sup>1</sup> / <sub>2</sub>
60	6560E	3 5 <sup>5</sup> / <sub>16</sub>	4 1 <sup>1</sup> / <sub>4</sub>	84	108	3 1 <sup>1</sup> / <sub>8</sub>	3 3 <sup>3</sup> / <sub>4</sub>
64	6564E	3 9 <sup>9</sup> / <sub>16</sub>	4 1 <sup>1</sup> / <sub>2</sub>	91	114	3 1 <sup>1</sup> / <sub>4</sub>	4
72	6572E	4 1 <sup>1</sup> / <sub>16</sub>	5	103	127	3 3 <sup>3</sup> / <sub>4</sub>	4 1 <sup>1</sup> / <sub>2</sub>

PACKAGED IN BOXES OF 10



# HOSE CLAMPS HEAVY-DUTY

Gates offers one of the most comprehensive lines of heavy-duty clamping products in the business.

We cover the world of heavy-duty truck, off-road and industrial applications.

## T-BOLTS

Heavy-duty T-Bolt clamps provide uniform sealing pressure for a positive, reliable seal. Specifically designed for use in the high vibration and large diameter applications common in heavy truck, off-road equipment and industrial machinery. All clamps feature bands with rolled edges, solid trunnions and 12mm hex bolt for quick installation. They are available in all carbon, partial stainless and full stainless construction.

### All Carbon T-Bolts – Ideal 31 Series

Typical applications include truck air intake systems, cold side charge air systems, off-road equipment and industrial machinery. General purpose construction comprising zinc-plated carbon steel with clear chromate finish.

Band/Bridge: Zinc-plated with clear chromate finish (AISI 1010/1020).

Bolt: 12mm hardened steel.

Trunnion: Zinc-plated with clear chromate finish (AISI 1035).



**31 SERIES**

### Partial Stainless T-Bolts – Ideal 32 Series

Additional corrosion resistant construction featuring stainless steel band. Suitable for all heavy-duty applications, construction equipment and industrial machinery.

Band/Bridge: AISI 304/430 stainless steel.

Bolt: 12mm hardened steel.

Trunnion: Zinc-plated with clear chromate finish (AISI 1035).



**32 SERIES**

### Full Stainless T-Bolts – Ideal 33 Series

Full 304 stainless construction suitable for marine applications. Increased corrosion resistance for prolonged exposure to moisture and extreme environments.

Band/Bridge: 304 stainless steel.

Bolt: 12mm stainless steel.

Trunnion: 304 stainless steel.



**33 SERIES**



T-BOLT CLAMPS			CLAMPING RANGE			
IDEAL PART NO. 31	IDEAL PART NO. 32	IDEAL PART NO. 33	MIN. DIA. (MM)	MAX. DIA. (MM)	BAND WIDTH (MM)	BAND THICKNESS (MM)
3123	3223	3323	23	25	18	0.6
3126	3226	3326	26	28	18	0.6
3129	3229	3329	29	31	20	0.6
3132	3232	3332	32	35	20	0.6
3136	3236	3336	36	39	20	0.6
3140	3240	3340	40	43	20	0.6
3144	3244	3344	44	47	22	0.8
3148	3248	3348	48	51	22	0.8
3152	3252	3352	52	55	22	0.8
3156	3256	3356	56	59	22	0.8
3160	3260	3360	60	63	22	0.8
3164	3264	3364	64	67	22	0.8
3168	3268	3368	68	73	24	0.8
3174	3274	3374	74	79	24	0.8
3180	3280	3380	80	85	24	0.8
3186	3286	3386	86	91	24	0.8
3192	3292	3392	92	97	24	0.8
3198	3298	3398	98	103	24	0.8
31104	32104	33104	104	112	24	0.8
31113	32113	33113	113	121	24	0.8
31122	32122	33122	122	130	24	0.8
31131	32131	33131	131	139	26	1.0
31140	32140	33140	140	148	26	1.0
31149	32149	33149	149	161	26	1.0
31162	32162	33162	162	174	26	1.0
31175	32175	33175	175	187	26	1.0
31188	32188	33188	188	200	26	1.0
31201	32201	33201	201	213	26	1.0
31214	32214	33214	214	226	26	1.0
31227	32227	33227	227	239	26	1.0
31240	32240	33240	240	252	26	1.0
31253	32253	33253	253	265	26	1.0
31266	32266	33266	266	278	26	1.0
31279	32279	33279	279	291	26	1.0
31292	32292	33292	292	304	26	1.0

PACKAGED IN BOXES OF 10

**Spring Loaded T-Bolts  
– 30030 Series**

The helical spring design provides the self-compensating (constant tension) feature that prevents the development of leak paths due to temperature fluctuations. Typical applications include heavy truck charge air and cooling systems.

Band/Bridge: 3/4" width, 201/301 stainless steel.

Bolt: 1/4"-28 plated steel. Spring: Plated steel.

Nut: 7/16" hex, nylon insert, plated steel locknut.

Trunnion: Plated steel.

Covers clamping ranges from 3 1/16" to 4 9/16".



**3033 SERIES**

SPRING LOADED T-BOLTS						
SAE SIZES	SPRING LOADED T-BOLT IDEAL PART NO.	Min.Dia. (IN.)	Max.Dia. (IN.)	Min.Dia. (MM)	Max.Dia. (MM)	Installation Torque
70	30306	3 1/16	3 3/8	77.8	85.7	75.0 in. lbs. (8.5 Nm)
86	30356	3 9/16	3 7/8	90.5	98.4	75.0 in. lbs. (8.5 Nm)
102	30406	4 1/16	4 3/8	103.2	111.1	75.0 in. lbs. (8.5 Nm)
118	30456	4 9/16	4 7/8	115.9	123.8	75.0 in. lbs. (8.5 Nm)



## HIGH PERFORMANCE WORM DRIVE CLAMPS

Premium POW'R-GEAR™ clamps are designed for high vibration and stubborn leakage applications such as industrial machinery, heavy truck, farm and off-road equipment engines.

Featuring an extra wide 5/8" (6mm) band and a wide profile housing that provides maximum engagement of screw threads to band, POW'R-GEAR™ clamps are engineered to deliver exceptionally high rates of band tension to handle even the toughest sealing jobs.

### Ideal 300 Grade Stainless Steel Lined POW'R-GEAR™ 6M Series

All 300 grade stainless steel construction.

Screw: 5/16" (8mm) hex-head. 305 stainless steel.

Band Liner: 5/8" (16mm) design. 0.028" (0.7mm) thick. 300 grade stainless steel.

Housing: 0.060" (1.5mm) thick. 300 grade stainless steel.



LINED CLAMPS		CLAMPLING RANGE					
SAE SIZES	IDEAL PART NO.	IN.		MM		FITS HOSE I.D.	
		Min.Dia.	Max.Dia.	Min.Dia.	Max.Dia.	Min.Dia.	Max.Dia.
175	6M175	1	1 3/4	25	45	7/8	1 1/8
212	6M200	1 1/4	2 1/8	32	54	1	1 1/2
262	6M250	1 3/4	2 5/8	45	66	1 1/2	2
312	6M300	2 1/4	3 1/8	57	79	2	2 1/2
362	6M350	2 3/4	3 5/8	70	92	2 1/2	3
412	6M400	3 1/4	4 1/8	83	105	3	3 1/2
462	6M450	3 3/4	4 5/8	95	117	3 1/2	4
512	6M500	4	5	108	130	4	4 1/2

PACKAGED IN BOXES OF 10





# HOSE CLAMPS HEAVY-DUTY CONSTANT TENSION

## FLEX-GEAR™ CLAMPS

To eliminate “cold flow” leakage, you have to shut off the leak paths. Flex-Gear™ heavy-duty constant tension clamps provide the self-adjusting band you need for a dependable seal, even in the coldest conditions.

- Larger, heavier-gauge, precision-formed spring washers provide higher rates of band tension and adjustment for a more dependable seal.
- Inner liner protects against shearing of hose surfaces.
- Provides a uniform 360° seal.
- Reusable.

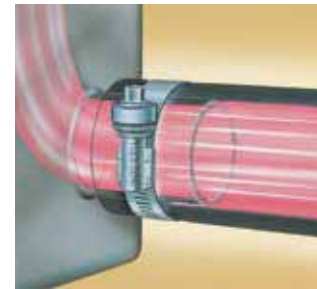


### Ideal Flex-Gear™ 47 Series

Screw: 5/16” (8mm) hex-head.  
410 stainless steel.  
Band, liner and housing: 9/16” (14mm) design.  
300 grade stainless steel.  
Washers: 300 grade stainless steel.



Non-compensating clamp cannot adjust during extreme temperature changes, allowing leaks to occur



Flex-Gear™ adjusts with the hose and fitting to maintain constant tension on the connection, eliminating leak paths

FLEX-GEAR™		CLAMPING RANGE					
SAE SIZES	IDEAL PART NO.	IN.		MM		FITS HOSE I.D.	
		Min.Dia.	Max.Dia.	Min.Dia.	Max.Dia.	Min.Dia.	Max.Dia.
	<b>47</b>						
10	4710	9/16	1 1/16	14	27	3/8	5/8
12	4712	5/8	1 1/4	16	32	3/8	3/4
16	4716	13/16	1 1/2	21	38	3/4	7/8
20	4720	13/16	1 3/4	20	44	3/4	1 1/8
24	4724	1 1/16	2	27	51	7/8	1 3/8
28	4728	1 5/16	2 1/4	33	57	1 1/4	1 5/8
32	4732	1 9/16	2 1/2	40	63	1 1/2	1 7/8
36	4736	1 13/16	2 3/4	46	70	1 3/4	2
40	4740	2 1/16	3	52	76	2	2 1/4
44	4744	2 5/16	3 1/4	59	82	2 1/4	2 1/2
48	4748	2 9/16	3 1/2	65	89	2 1/2	3

PACKAGED IN BOXES OF 10

# HOSE CLAMPS SPECIALTY

## QUICK RELEASE CLAMPS

Quick release style worm drive clamps are indispensable for installation in closed systems where the clamp must be disengaged to be applied. The swivel-action locking of screw to band makes both installation and removal fast and easy.

### Ideal Snaplock™ 58 Series

Screw: 3/8" (8mm) hex-head. 410 stainless steel.  
Band and housing: 9/16" (14mm) design.  
201/301 stainless steel.



SNAPLOCK/QUICK RELEASE		CLAMPING RANGE					
SAE SIZES	IDEAL PART NO.	IN.		MM		FITS HOSE I.D.	
		Min.Dia.	Max.Dia.	Min.Dia.	Max.Dia.	Min.Dia.	Max.Dia.
	58						
12	5812	1/2	1 1/4	13	32	3/8	3/4
20	5820	3/4	1 3/4	19	44	3/4	1 1/8
24	5824	1	2	26	51	7/8	1 3/8
28	5828	1	2 1/4	26	57	7/8	1 5/8
36	5836	1	2 3/4	26	70	7/8	2
48	5848	1 1/2	3 1/2	38	89	1 1/2	2 3/4
56	5856	1	4	26	101	7/8	3 1/4
72	5872	2	5	51	127	2	4 1/2
88	5888	2	6	51	152	2	5 1/2
104	58104	1 3/4	7	45	178	1 3/4	6 1/2
116	58116	1 3/4	7 3/4	45	197	1 3/4	7
128	58128	2 1/4	8 1/2	45	216	1 3/4	7 1/2
136	58136	1 3/4	9	45	228	1 3/4	8 1/2
152	58152	2	10	51	254	2	9 1/2
188	58188	2	12 1/4	51	311	2	11 1/2

PACKAGED IN BOXES OF 10





# HOSE CLAMPS RETAIL PACKS

## CARDED CLAMPS

Convenient method for displaying hose clamps in retail environment.

Each blister pack contains 2 each of the designated clamp size.

Attractive design for displaying on showroom planograms.



CARDED CLAMPS		
IDEAL PART NO.	CLAMPING RANGE	PER CARD
52F15C	13-15mm	2
6204C	6-16mm	2
6206C	8-22mm	2
5710C	13-27mm	2
5712C	13-32mm	2
5716C	18-38mm	2
5720C	19-44mm	2
5724C	26-51mm	2
5728C	32-57mm	2
5732C	38-63mm	2

PACKAGED IN BOXES CONTAINING 10 CARDS

## IDEAL HANDY PACKS

Ideal's Handy Pack are perfect for the DIY handy man, trade and retail customers. Convenient method for a variety of clamps in a sturdy plastic container. Suitable for automotive stores and trade customers including mobile mechanic's etc.

Packed into a sturdy clear plastic container with a screw cap lid. Sticker details all the relevant information and pack contents. Part No. IAP-26 contains a mixture of twenty six 57 Series clamps.



Part No. IAP-26

CARDED CLAMPS		
IDEAL PART NO.	QTY	CLAMPING RANGE
<b>IAP-26</b>		
6204	4	6-16mm
6206	4	8-22mm
5712	10	13-32mm
5720	4	19-44mm
5736	4	44-70mm



# HOSE CLAMPS GRAB PACKS

## FUEL LINE HOSE CLAMP GRAB PACK: IFCM-1

Suitable for fuel injection hose, transmission hose and other small O.D. hose applications.



FUEL INJECTION CLAMPS		
IDEAL PART NO.	CLAMPING RANGE	QTY
52F13	11-13mm	10
52F15	13-15mm	20
52F16	14-16mm	10

Screw: 7mm hex-head  
Zinc-plated, clear chromate carbon steel.  
Band: 9mm width.  
Zinc-plated, clear chromate, carbon steel.

PERFORATED BAND CLAMPS		
IDEAL PART NO.	CLAMPING RANGE	QTY
6204	6-16mm	20
6205	7-17mm	20
6206	8-22mm	20

Stainless steel band & housing carbon steel screw.

## CLAMP & HOSE CONNECTOR GRAB PACK: ICCM-1

Suitable for hose replacement and repair.



FUEL INJECTION CLAMPS			
IDEAL PART NO.	CONNECTOR	O.D. (MM)	QTY
28603	Straight	12.7	5
28604	Straight	15.9	5
28605	Straight	19	5
28623	Elbow	12.7	5
28624	Elbow	15.9	5
28625	Elbow	19	5

For cooling system applications.

PERFORATED BAND CLAMPS		
IDEAL PART NO.	CLAMPING RANGE	QTY
5708	11-25mm	10
5710	13-27mm	10
5712	13-32mm	10
5716	18-38mm	10

Stainless steel band & housing carbon steel screw.

## FLEXIBLE HOSE CLAMP DRIVERS

Stop using that old rigid nut driver and add some flexibility to your work! The flexible shaft and no-slip grip provide 90° access and work best in hard-to-reach places such as compact car and boat engines, as well as plumbing repair applications. The socket fits mini and standard hose clamp screw heads. Just flip the socket for the desired size of 1/4" (6mm) or 5/16" (8mm).



Part No. GFD-1

Part no. GFD-3  
Suits 6mm - 7mm Socket



# COOLANT SYSTEM - THERMOSTATS

## THE SMARTEST RANGE ON THE MARKET

With their OE design, Gates thermostats fit perfectly, prevent leaks and keep engine temperatures within original equipment specifications. And what's more: by including different seals and gaskets in one package, the same Gates thermostat reference can be used for a whole range of vehicle types. So by carefully balancing the number of references to the market needs, our range guarantees the highest car parc coverage by the fewest units of stock!



### GATES CONVENTIONAL WAX THERMOSTATS

The heart of the Gates thermostat is the temperature-sensitive heat motor. A specifically formulated, thermally-expansive wax is calibrated to assure prompt and precise operation of the thermostat valve. Warming the wax element increases the volume of the wax, thereby moving the piston and opening the valve. If the temperature drops, the volume is reduced, and a spring forces the piston back to the starting position.



Simple, effective, and tried and tested millions of times over!



### INTEGRATED THERMOSTAT HOUSINGS

There are two types of integrated thermostat housings, (ITH) MAP controlled and standard. Both improve temperature regulation and control, helping engines operate more efficiently. A large number of vehicles equipped with integrated thermostat housings are just now starting to show up in shops. As the opportunity grows, go with Gates, the high quality alternative to OE dealerships.



Integrated housed thermostats have now become the preferred design for all OEM's. 51% of the vehicles being produced today have them installed. This number will continue to increase in the future. Housed thermostats are integral thermostats complete with optimally designed housing.

#### STANDARD

All-in-one, bolt-on solution that includes everything needed for a complete job:

- Includes thermostat, insert, seal and housing.
- Easy, one step fit and installation.
- No special tools required.
- Category leading coverage.

#### MAP CONTROLLED

Bolt-on solution with included sensor that links to the engine control unit:

- Same easy installation as standard ITH.
- Allows ECU to regulate engine temperatures.
- Provides adaptive, on-demand engine cooling.
- Lowers emissions and fuel consumption.





 **COOLANT OUTLETS**

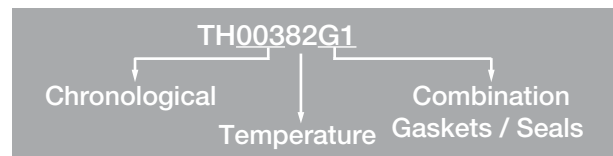
Gates coolant outlets feature superior construction and design compared to competitive parts.

- All-in-one and simple bolt-on solutions.
- Easy, one-step fit and installation.
- No special tools required.
- Top-quality materials and improved seal design provide leak-free service.
- Advanced weld process guarantees consistent, long-lasting performance.



**GATES THERMOSTAT NUMBERING**

- Last 2 digits (before G1) indicate the opening temperature of the thermostat (82°C).
- G1 means that seals/gaskets are included (without G1 no gaskets/seals).
- G1 & G2 different combinations of seals & gaskets (max 5 in a box).



**TEMPERATURE**

Gates is the first in the industry to supply thermostats in degrees Celsius. While other suppliers' thermostat part numbering reflects temperature in Fahrenheit, Gates thermostats reflect temperature in degrees Celsius.

FAHRENHEIT	CELSIUS
160°F	71°C
170°F	77°C
180°F	82°C
190°F	88°C
200°F	93°C
210°F	99°C
220°F	104°C

 **GREEN STRIPE™ HEAVY-DUTY THERMOSTATS**

Quality controlled factory calibration assures accurate heat control under extreme variations in temperature, load and engine vibrations. Approved for marine applications.

- Heavy-gauge brass and stainless steel with positive piston heat motor.
- Available in Choke type, Top By-Pass, Bottom By-Pass, Side By-Pass, Normally Open and other types to meet heavy-duty cooling system designs.



**Note:** Seal should always be changed when new thermostat is installed.



**GREEN STRIPE™ HEAVY-DUTY THERMOSTAT SEALS**

Fits securely around thermostat valve to prevent leakage.  
Approved for marine applications.

- Corrosion-resistant steel construction.
- Specially constructed to assure accurate fit.



**GATES LOW TEMPERATURE THERMOSTATS**

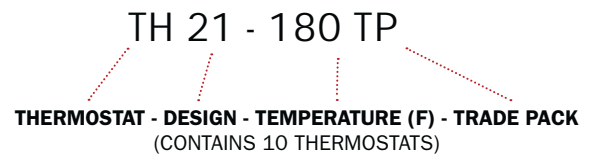
Fits securely around thermostat valve to prevent leakage.  
Approved for marine applications.

- For high performance engines, engines subject to high loads for extended periods, or engines under varying loads.
- With a low temperature thermostat the coolant is released to flow more freely.
- This helps delay or even prevent high temperature spikes when the engine is under higher loads.
- Can be used to reduce the risk of overheating or poor performance as a result of high engine temperatures.



**GATES LOW TEMP THERMOSTAT NUMBERING**

- First two letters “TH” indicate Thermostat.
- The first numeric digits refer to the thermostats design.
- Last three numeric numbers represents the opening temperature in Fahrenheit.
- Last two letters “TP” indicated trade pack which has a quantity of ten thermostats.



PART NO.	TEMP FAHRENEIT	TEMP CELSIUS
TH21-180TP	180	82
TH1-160TP	160	71
TH5-180TP	180	82
TH7-180TP	180	82
TH13-180TP	180	82
TH38-170TP	170	77
TH56-180TP	180	82

# COOLANT SYSTEM RADIATOR PRESSURE CAPS

ALL GATES RADIATOR PRESSURE CAPS ARE CONSTRUCTED OF CORROSION-RESISTANT, HEAVY-GAUGE METAL. THIS ASSURES LONG SERVICE LIFE AND ACCURATE CONTROL OF PRESSURE.

1.0 Bars = 14.5 psi



## SPINLOK CAPS

Can be used for applications with or without coolant recovery systems. Inventory requirements are dramatically reduced.

- Unique eight-sided, scalloped crown allows for a firm grip for easy installation and removal.
- Neoprene upper and lower seal.
- Body rotates independently of crown – customer merely pushes down and twists.
- Safe and reliable.



## SAFTI-VENT PRESSURE RELEASE CAPS

Can be used for applications with or without coolant recovery systems. Inventory requirements are dramatically reduced.

- Safety release lever.
- Protects against accidental burns by releasing steam through overflow tube.



## STANDARD CAPS

- Covers a wide range of pressures.



## COOL CONTROL CAPS

Diverts pressurised coolant to a reservoir rather than to an overflow valve.

- Constant pressure-type cap for use on closed cooling systems.
- Increases cooling system efficiency by eliminating air from the cooling system.



# COOLANT SYSTEM RACING RADIATOR CAPS

THE RACING RADIATOR CAPS ARE SPECIALTY PARTS FOR USE ON HIGH PERFORMANCE COOLING SYSTEMS. CAPS ARE AVAILABLE IN 18 TO 22, 21 TO 25 AND 28 TO 32 POUND RANGES. CAPS ARE AVAILABLE FOR MINI (32MM I.D., 16 MM DEEP), AND STANDARD SAE "A" SIZE (2 1/8" O.D., 3/4" DEEP) FILLER NECKS.



## 10361 (19-21 POUNDS), 10362 (22-24 POUNDS)

These two caps fit the mini (32mm I.D., 16 mm deep) filler neck. They include lower and upper gaskets so they can be used on both open (no recovery bottle) and closed (recovery bottle) cooling systems.



## 10372 (21-25 POUNDS), 10373 (28-32 POUNDS)

These caps fit a standard SAE "A" size (2 1/8" O.D., 3/4" deep) filler neck. These do not include an upper gasket, making them for use on open cooling systems only.



## 10381 (18-22 POUNDS), 10382 (21-25 POUNDS),

These are Safti-Vent™ style racing radiator caps that fit the standard SAE "A" size (2 1/8" O.D., 3/4" deep) filler neck. They both include both lower and upper gaskets so they can be used on open or closed cooling systems.



## 10391 (18-22 POUNDS), 10392 (21-25 POUNDS), 10393 (28-32 POUNDS)

These are Spinlok design caps that fit the standard SAE "A" size (2 1/8" O.D., 3/4" deep) filler neck. The caps include both lower and upper gaskets so they can be used on open or closed cooling systems.



**WARNING** – These are high pressure radiator caps made for use on race cars only. Do not use them on a passenger car. Pressure test the complete cooling system to the maximum level of pressure indicated on the box. Failure to test the cooling system to the proper pressure prior to installing the cap may result in damage to the cooling system or bodily injury.



# COOLANT SYSTEM H.D. RADIATOR CAPS

## HEAVY-DUTY RADIATOR CAPS

For use on heavy-duty trucks, buses and tractors.

- Fits applications with 3/4" deep filler necks.
- Packaging: Individually boxed.



PART NO.	PRESSURE (PSI)	FITS FILLER NECK I.D. (IN.)
31307	4	2 11/16
31308	7	2 11/16
31309	10	2 11/16

## HEAVY-DUTY COOL CONTROL CAPS

Diverts pressurised coolant to reservoir instead of an overflow tube.

- Corrosion-resistant, heavy-gauge metal construction assures long life and accurate control of pressure.
- Atmospheric type valve allows cooling system to pressurise as needed, resulting in less strain on system components.



PART NO.	PRESSURE (PSI)
31348	7
31349	10
31350	15





# FUEL SYSTEM - HOSE

  **BARRICADE™ FUEL INJECTION HOSE (MPI)**

Low-permeation, premium hose for use on all fuel systems, including fuel injection (MPI). Approved for use with gasoline, diesel, bio-diesel including soybean methyl ester (SME), rapeseed methyl ester (RME), palm methyl ester (PME) per ASTM D6751, E-85, methanol, ethanol, ethanol extended gasoline, and gasohol fuels. Patented five-layer Greenshield™ barrier technology keeps fuel out of the environment while delivering peak fuel efficiency.



- Exceeds SAE J30R14T2 (except for kink resistance) as well as low-permeation requirements for carburetion.
- Aramid reinforcement spiral braid for superior burst strength.
- Thermoplastic barrier layer.
- Oil, heat, ozone and abrasion resistant cover.
- 225 psi working pressure rating.
- Recommended for any fuel injection applications for superior service life.
- Temperature rating: -40 °C to 135 °C continuous, up to 150 °C intermittent.

					2' RETAIL (0.61M)	15' LENGTH (4.57M)	25' LENGTH (7.62M)	250' REEL (76.2M)
I.D. (IN.)	I.D. (MM)	O.D. (IN.)	O.D. (MM)	WORK PRESS. (PSI)	PART NO.	PART NO.	PART NO.	PART NO.
1/4	6.3	1/2	12.7	225	27334	27347	27339	27344
5/16	8.0	9/16	14.3	225	27335	27348	27340	27345
3/8	9.5	5/8	15.9	225	27336	27349	27341	27346
1/2	12.7	25/32	19.8	225	-	-	27342	-



### BARRICADE™ CARBURETION FUEL LINE HOSE

Low-permeation, premium hose for use on carbureted engines, PCV and EEC systems, and for fuel return hose on fuel injection systems. Not for use on the pressure-side of fuel injection systems. Approved for use with leaded and unleaded gasoline, diesel, bio-diesel, E-85, methanol, ethanol, and gasohol fuels. Patented five-layer Greenshield™ barrier technology keeps fuel out of the environment while delivering peak fuel efficiency.



- Meets SAE J30R14T1, EPA 40 CFR 1051.110, and carburetion. small engine off-road requirements for low permeation (except for kink resistance).
- Textile spiral layer (two spirals).
- Thermoplastic barrier layer.
- Oil, heat, ozone and abrasion resistant cover.
- Recommended for carbureted engines in cars, light trucks, off-road vehicles and small engines.
- Temperature rating: -40 °C to 125 °C.

**Note:** Do not submerge in gasoline.

**Caution:** Do not use on pressure lines on fuel injection systems or cooling system applications.

Use MPI (4219D) or Barricade Fuel Injection (4219BF) hose for Multi-Port Injection systems.

					2' RETAIL (0.61M)	25' LENGTH (7.62M)	250' REEL (76.2M)
I.D. (IN.)	I.D. (MM)	O.D. (IN.)	O.D. (MM)	WORK PRESS. (PSI)	PART NO.	PART NO.	PART NO.
3/16	4.8	13/32	10.3	50	27302	27312	27321
1/4	6.3	1/2	12.7	50	27303	27313	27323
5/16	8.0	9/16	14.3	50	27304	27314	27324
3/8	9.5	5/8	15.9	50	27305	27315	27325
1/2	12.7	25/32	19.8	35	27306	27316	27326

### BARRICADE™ MARINE FUEL HOSE

Barricade Marine Fuel Line Hose in U.S Coast Guard Class A1-15 Type R1 approved.

- CARB & EPA Complaint.
- Multi-Fuel & Bio-Fuel Compatible.



PART NO.	PRODUCT DESCRIPTION	SIZE (IN.)	SIZE (MM)	WORK PRESS. (PSI)
27370	BARRICADE MARINE FUEL LINE HOSE	1/4" X 25	6 X 635	35
27371	BARRICADE MARINE FUEL LINE HOSE	5/16" X 25	8 X 635	35
27372	BARRICADE MARINE FUEL LINE HOSE	3/8" X 25	9.5 X 635	35



**SAFETY STRIPE™ II RETURN FUEL LINE/  
PCV/EVAPORATIVE EMISSION  
CONTROL HOSE**



Multi-purpose hose for use on return fuel lines, PCV and EEC systems, and for fuel return hose connections on diesel fuel injection systems. Approved for use with leaded and unleaded gasoline, diesel, methanol and ethers (up to the legal limits allowed by the EPA).

- Spiral reinforced construction.
- Nitrile tube.
- NBR-PVC cover.
- Oil resistant cover resists the effects of high-heat and ozone found in engine compartments.
- Meets SAE 30R6 and 30R7.
- Vacuum rating of 24 In./Hg for sizes less than 1/2" I.D., and 10 In./Hg for sizes 1/2" to 3/4" I.D. at ambient temperatures.
- Packaging: See table.
- Temperature rating: -40 °C to 125 °C with gasoline blends.

**Caution:** Do not use for pressure lines on fuel injected engines or for cooling system applications.

Use Barricade Fuel Injection hose for fuel injection applications. Intended for use with fuels where MTBE concentrations are no greater than 15% by volume.

					25 FOOT REEL (7.62M)	25 FOOT BOX (7.62M)	250 FOOT REEL (76.2M)
I.D. (IN.)	I.D. (MM)	O.D. (IN.)	O.D. (MM)	WORK PRESS. (PSI)	PART NO.	PART NO.	PART NO.
1/8	3.2	5/16	7.9	50	27000	—	27099
3/16	4.8	13/32	10.3	50	27001	—	27098
1/4	6.3	1/2	12.7	50	27002	—	27068
3/16	8.0	9/16	14.3	50	27003	—	27069
3/8	9.5	5/8	15.9	50	27004	—	27070
7/16	11.1	47/64	18.3	35	—	27005	27071
1/2	12.7	25/32	19.8	35	—	27006	27019
5/8	15.9	15/16	23.8	35	—	27008	27020
3/4	19.0	1 1/8	28.6	35	—	27010	27021



**PACKAGED SAFETY STRIPE™ II RETURN FUEL LINE/PCV/EVAPORATIVE EMISSION CONTROL HOSE**



Convenient, popular two foot lengths of return fuel line, PCV and EEC hose in self-service, reusable, recyclable package. Can be stacked on shelf or hung on a pegboard display.

- Easy to follow instructions in each package.
- Handy hose diameter indicator helps customer select the correct size.

**Note:** Not suitable for use with Bio-Diesel or 100% Ethanol or Methanol fuels.

					2 FOOT (0.6M)
I.D. (IN.)	I.D. (MM)	O.D. (IN.)	O.D. (MM)	WORK PRESS. (PSI)	PART NO.
1/4	6.3	1/2	12.7	50	27027
5/16	8.0	9/16	14.3	50	27028
3/8	9.5	5/8	15.9	50	27029



**SUBMERSIBLE FUEL LINE HOSE**



Ordinary fuel line hose is designed to handle fuel on the inside only. The Gates Submersible Fuel Line Hose exceeds the SAE 30R10 rating and is capable of handling gasoline, alcohol-extended gasoline or diesel fuel in fully immersed, mobile, stationary and marine applications.

- Engineered for constant contact with gasoline (and other liquid petroleum distillates) on the inside and the outside.
- Excellent for use on fuel pumps in the fuel tank.
- Meets the SAE 30R10 specification for submersible fuel line hose applications.
- Fluoroelastomer (FKM) tubed cover resists fuel permeation and retards aging.
- Aramid Fibre reinforcement—the same fibre used in bulletproof vests and is pound-for-pound stronger than steel.
- Maximum temperature rating: +150 °C.

			1 FOOT (0.3M)	10 FOOT (3M)	32.8 FOOT (10M)	164 FOOT (50M)
I.D. (IN.)	I.D. (MM)	WORK PRESS. (PSI)	PART NO.	PART NO.	PART NO.	PART NO.
1/4	6.8	100	27086	27087	27089	27013
5/16	8.0	100	27093	27080	27083	27014
3/8	9.5	100	27097	27081	27084	27015



  **FUEL FILL HOSE**

Designed for transferring fuel from vehicle’s filler neck to fuel tank. Works on passenger cars and light trucks, as well as on auxiliary fuel tanks on recreational vehicles. For use with most types of fuels - especially resistant to gasoline and diesel.



- Suitable for use with gasoline, gasohol blends of ethanol, methanol, ethers, diesel and bio-diesel to B20 (up to maximum concentrations allowed by EPA).
- Corrugated cover with helical wire reinforcement.
- Features a high quality nitrile tube.
- Meets requirements of SAE 30R5.
- Cuts easily with knife and wire cutter.
- Temperature rating: - 40°F to 212°F (-40°C to +100°C) with gasoline blends, -40°F to 125°F (-40°C to +51°C) with bio-diesel (B20).
- Packaging: 3 ft. (0.91m) lengths.

I.D. (IN.)	I.D. (MM)	WORK PRESS. (PSI)	PART NO.	STD. PKG.
1 1/4	32	20	23963	10
1 1/2	38	20	23924	10
1 7/8	48	20	23930	10
2	51	20	23932	10
2 1/4	57	20	23936	8
2 1/4	57	20	23940	8





### FUEL FILLER NECK HOSE

Designed specifically for auxiliary gas tanks on recreational vehicles. Excellent replacement for passenger cars and trucks where a straight hose with a minimal bend is required.



- Suitable for use with gasoline, gasohol blends of ethanol, methanol, ethers, diesel and bio-diesel to B20 (up to maximum concentrations allowed by EPA).
- Smooth oil resistant cover, tough textile cord reinforcement and petroleum-resistant nitrile tube.
- Non-wire reinforced.
- Meets SAE 30R6 specifications.
- Temperature rating: - 40°F to 212°F (-40°C to +100°C).
- Bio-diesel (B20) Temperature rating: - 40°F to 212°F (-40°C to +51°C).

**Caution:** Not recommended for marine gasoline applications.

PART NO.	I.D. (IN.)	O.D. (IN.)	CTR. LENGTH (FOOT)	WORK PRESS. (PSI)
24702	1 3/8	1.71	3	20
23964	1 1/2	1.84	3	20
23968	1 3/4	2.09	3	20
23972	2	2.14	3	20
23976	2 1/4	2.59	3	20
23980	2 1/2	2.84	3	20

45° BEND			
PART NO.	I.D. (IN.)	CTR. LENGTH (FOOT)	WORK PRESS. (PSI)
24710	1 1/2	15.9	20
24711	1 3/4	15.9	20
24712	2	15.9	20
24713	2 1/4	15.9	20
24714	2 1/2	15.8	20

90° BEND			
PART NO.	I.D. (IN.)	CTR. LENGTH (FOOT)	WORK PRESS. (PSI)
24715	1 1/2	15.1	20
24716	1 3/4	15.0	20
24717	2	14.9	20
24718	2 1/4	14.7	20
24719	2 1/2	14.6	20



# FUEL SYSTEM - FUEL CAP



## FUEL CAPS

Includes Evaporative Emission Control, Fenderwell and Exterior Fuel Caps. Rugged, heavy-duty construction. Meets or exceeds OEM specifications. Caps fit both shallow and deep cam filler necks – vented, non-vented and vented anti-surge.

### FENDERWELL

- Sturdy metal construction throughout.



### LOCKING

- Comes with two keys. Keyed-alike caps available on special order.



### EXTERIOR

- Attractive chrome-plated finish.



### VAPOR VENT

- Designed for late model cars.
- Handy push button allows car owner to release pressure from fuel system prior to removing cap from the filler neck.
- Reduces the risk of fuel spray and vapor surge.





**HEAVY-DUTY FLEET AND OFF-ROAD EQUIPMENT HEAVY-DUTY SADDLE TANK CAPS**

Heavy metal construction throughout. Meets I.C.C. requirements.

- Available for side or saddle tanks.
- Locking caps come with two keys. Keyed-alike caps available on special order.
- Packaging: Individually boxed.



PART NO.	DESCRIPTION	TYPE
31801	Solid Brass - 2 11/16" Non-Vented (2 1/8" x 12 UN Male Thread)	Non - Locking
31803	Solid Brass - 2 49/64" Vented (2"x 11 1/2 NPSM Female Thread)	Non - Locking
31804	Zinc-plated Steel or Aluminum - 4 7/16" Vented (Bayonet - Fits 3 Cam-Ordnance Type Filler Neck)	Non - Locking
31805	Solid Brass - 5 3/32" Non-Vented (4 1/4" x 12 NS Male Thread)	Non - Locking
31806	Solid Brass - 4 31/32" Non-Vented (4 1/4" x 8 NS Male Thread)	Non - Locking
31807	Aluminum - 4 5/32" Non-Vented (4" x 8 NPSM Female Thread)	Non - Locking
31821	Solid Brass - 2 1/2" Vented (2 1/8" x 12 UN Male Thread)	Locking
31823	Solid Brass - 2 1/2" Vented (2"x 11 1/2 NPSM Female Thread)	Locking
31826	Solid Brass - 4 63/64" Non-Vented (4 1/4" x 8 NS Male Thread)	Locking
31827	Solid Brass - 4 25/32" Non-Vented (4" x 8 NPSM Female Thread)	Locking

**DIESEL EMISSION FLUID (DEF) CAPS - LOCKING & NON-LOCKING**

Just 5ml of Diesel or other fluids into a DEF or Adblue reservoir can cost thousands of dollars in aggravating service repairs.

- The blue appearance of Gates Locking and Non-Locking DEF caps clearly identifies the DEF tank filler neck.
- Stops contamination of costly engine repairs.
- Prevents sabotage, theft and/or cross contamination.
- Free spins when locked.



PART NO.	DESCRIPTION	CAM TYPE	LOCKING	VENTING	CAP DEPTH (IN.)	CAP DEPTH (MM)	NECK DIAMETER (IN.)	NECK DIAMETER (MM)	SHELL DIAMETER (IN.)	SHELL DIAMETER (MM)
30001	HD DEF CAP	QUICK-ON	NO	VENTED	1	25	2.36	60	3.54	90
30001L	HD LOCKING DEF CAP	QUICK-ON	YES	VENTED	1	25	2.36	60	3.54	90
30002	HD DEF CAP	QUICK-ON	NO	VENTED	11/16	17	1.57	60	2.56	65
30002L	HD LOCKING DEF CAP	QUICK-ON	YES	VENTED	11/16	17	1.57	60	2.56	65
30003	HD DEF CAP	THREADED	NO	NON-VENTED	1	25	1.2	30.5	1.75	44.5
30005	HD DEF CAP	CAM-ON	NO	NON-VENTED	14/16	22	1.33	33.8	1.55	39.4
30006	HD DEF CAP	THREADED	NO	NON-VENTED	15/16	24	1.2	30.5	3.68	93.5
30011	HD DEF CAP	THREADED	NO	VENTED	1 2/16	29	1.76	44.7	2.31	58.7



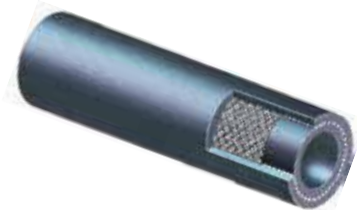


# OIL & LUBRICATION SYSTEM

## TRANSMISSION OIL COOLER HOSE

Provides a safe, heat and oil resistant connecting line between oil cooler and transmission.

- One fiber braid reinforcement over an oil resistant nitrile rubber tube.
- Oil and abrasion resistant black CSM cover.
- Meets or exceeds SAE J1019 requirements.
- Can be stacked on shelf or hung on pegboard.
- Easy-to-follow instructions in each package.
- Handy hose diameter indicator on package.
- Package is recyclable.
- Maximum temperature rating: +300° F (+150° C).



				3 FT. LENGTH	25 FT. LENGTH	50 FT. LENGTH
I.D. (IN.)	I.D. (MM)	WORK PRESS. (PSI)	PRESS BURST	PART NO.	PART NO.	PART NO.
5/16	7.9	400	1600	27056	27058	27060
3/8	9.5	400	1600	27057	27059	27061
1/2	12.7	400	1600	27065	27066	27067

## PCV OIL FILLER CAPS

Meets requirements of emission control systems on late model cars and light trucks. Universal design offers maximum coverage with minimum inventory.

- Sealed construction prevents engine crankcase gases from escaping into the atmosphere.
- Heavy-gauge steel construction resists under-hood heat and corrosion.



**Note:** To assure proper operation of PCV systems, oil filler caps should be cleaned or replaced every 20,000kms.

## OIL FILLER CAPS

Durable construction assures long service life and prevents engine crankcase gases from escaping into the atmosphere.

- Special finish resists rust and provides excellent protection against under-hood heat.





# POWER STEERING SYSTEM

## POWER STEERING HOSE ASSEMBLIES

Gates extensive field examination and testing assure proper fit. Designed for passenger cars and light trucks. General instructions are packed with every assembly. Hoses and fittings are also available for tailor-made medium and heavy-duty truck applications.

- Comes complete with factory-installed, pre-bent zinc-dichromate plated end fittings, brackets, sensor ports, sheathing, bushings and grommets.
- Exceeds SAE J2050 performance requirements.



## LOW PRESSURE POWER STEERING RETURN LINE ASSEMBLIES

Moulded Low Pressure Power Steering Hose.

- Connection on uncoupled end is made with ordinary worm-drive clamps.



PART NO.	I.D. (MM)	LENGTH (MM)
02-1190	15	320
02-1414	16	185
02-1586	10	440

## PS188 POWER STEERING HOSE

Recommended for power steering pressure lines.

- Synthetic rubber hose cover developed specifically to resist rugged under-hood environments Type CSM.
- Meets SAE J2050 Type 1 performance requirements.
- 50 Foot Part No. 86050.
- 25 Foot Part No. 86049.





  **BULK POWER STEERING HOSE**

Allows “custom fit” cutting and assembly for low pressure fluid return lines.

- Use with return line end fittings if required.
- Meets SAE J189 requirements.
- Temperature rating: -40°F to +275°F (-40°C to +135°C) (+300°F for CPE hose).



PART NO.	I.D. (IN.)	I.D. (MM)	O.D. (IN.)	O.D. (MM)	LENGTH (FT.)	LENGTH (M)
350010	3/8	10	.655	17	25	7.6
350020	3/8	10	.655	17	5	1.5
349970	1/2	13	NA	-	10	3

PART NO.	I.D. (IN.)	I.D. (MM)	O.D. (IN.)	O.D. (MM)	LENGTH (FT.)	LENGTH (M)
350030	5/8	16	.970	17	3 1/2	1
349980	5/8	16	.970	17	10	3
349990	3/4	19	NA	-	10	3

 **HIGH TEMPERATURE 300° CPE POWER STEERING RETURN LINE HOSE**

For late model vehicles.

- Use with return line end fittings if required.
- Special high temperature tube and cover designed for today’s high under-hood temperatures.
- Meets SAE J189 requirements and SAE J2076.
- Temperature rating: -40°F to +300°F (-40°C to +150°C).
- Packaging: Available in 25 ft. lengths.



I.D. (IN.)	O.D. (IN.)	LENGTH (FT.)	WORK PRESS. (PSI)	BURST PRESS. (PSI)	PART NO.
3/8	.655	25	250	1800	349950
1 1/3	.682	25	250	1800	349960

 **POWER STEERING REPAIR KITS**

Kit components are made of OEM quality materials and come with easy-to-read instructions. Repair kits available for:

- Adjuster Plug Seal.
- Power Cylinder Seal.
- Control Valve Seal.
- Pump Seal.
- Piston Rod End Bushing.
- Rack and Pinion Seal.
- Pitman Shaft Seal (complete).
- Steering Gear Major Seal.
- Pitman Shaft Seal (lower).





# BRAKING SYSTEM

## AIR BRAKE HOSE ASSEMBLIES

Factory crimped assemblies meet the rigorous demands of the fleet and heavy-duty market.

- Extremely flexible and kink resistant.
- Two spiral construction meets SAE J1402 specifications.
- Complies with DOT FMVSS 106 requirements.
- Couplings meet SAE and DOT minimum pull-off requirements.
- High quality brass male pipe fitting on one end, female air brake swivel with male pipe adapter on other end.
- Temperature rating: -40°F to +212°F (-40°C to +100°C).



3/8" I.D. HOSE WITH 1/4" MPT FIXED + SWIVEL	
LENGTH (IN.)	PART NO.
14	27242
16	27243
18	27244
20	27245
24	27246
26	27247
30	27248
32	27249
36	27250
42	27251
48	27350

3/8" I.D. HOSE WITH 3/8" MPT FIXED + SWIVEL	
LENGTH (IN.)	PART NO.
14	27261
16	27262
18	27263
20	27264
24	27266
26	27267
28	27268
30	27269
32	27270
34	27271
36	27272
42	27275
45	27277
48	27279
60	27281

1/2" I.D. HOSE WITH 3/8" MPT FIXED + SWIVEL	
LENGTH (IN.)	PART NO.
18	27252
20	27253
24	27254
28	27255
30	27256
32	27257
36	27258
42	27259
48	27360
60	27361
72	27362

1/2" I.D. HOSE WITH 1/2" MPT FIXED + 3/8" SWIVEL	
LENGTH (IN.)	PART NO.
18	27286
20	27287
24	27289
28	27291
30	27292
32	27293
34	27294
36	27295
42	27297



## BRAKE LINE ABRASION SHIELDS

The Federal Motor Carrier Safety Administration's Compliance Safety Accountability (CSA) program requires abrasion shields on brake lines that fall below the chassis and in circumstances where chafing, kinking or other mechanical damage can occur. Gates provides high-quality products that meet the rules and specifications for brake line protection.

### PolySleeve™ High Density Polyethylene Hose Wrap

Protects lines and hoses from chafing, rubbing, crushing, ultraviolet rays and other hazards that cause hose failures. Easy to install before or after assemblies are in place. Effective temperature range from  $-40^{\circ}\text{F}$  to  $+280^{\circ}\text{F}$  ( $-40^{\circ}\text{C}$  to  $+138^{\circ}\text{C}$ ).



### Nylon Sleeves

Nylon filament mesh forms a self-renewing shield that protects against abrasion for brake lines, hose and hose bundles. Extremely flexible, flame resistant and easy to install.





 **AB SERIES AIR BRAKE HOSE**

Computer-controlled manufacturing process virtually insures product uniformity.

- Superior EPDM rubber resists damaging effects of ozone and heat, plus harmful grease and oil common to air brake systems.
- Four-spiral polyester construction, meets SAE J1402 specifications. Complies with DOT FMVSS 106 requirements.
- Flexible and kink-resistant.
- Designed to accept all styles of air brake couplings, including conventional brass and plastic couplings.
- Temperature rating: -40°F to +212°F (-40°C to +100°C).
- Packaging: 50ft (15.2m) per carton or 250ft (76.2m) reels.
- Maximum 3 pieces, shortest length 50ft (15.2m) or greater.

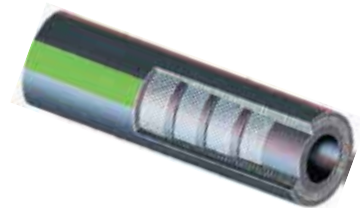


PART NO.	I.D. (IN.)	I.D. (MM)	LENGTH (FT.)	WORK PRESS. (PSI)
27240	3/8	9.5	50	225
28760	3/8	9.5	250	225
27241	1/2	12.7	50	225
28761	1/2	12.7	250	225

 **GREEN STRIPE™ VACUUM BRAKE HOSE**

Extra heavy-duty hose designed to fit most air brake systems on trucks, trailers and other heavy equipment.

- Wrapped hose construction with multiple plies of rubber-impregnated fabric.
- Resists collapsing or deforming even under high vacuum at elevated temperatures.
- Rated at 30 In./Hg.
- Exceeds SAE J1403, Type H requirements. Complies with DOT FMVSS 106VH requirements.
- Temperature rating: -40°F to +257°F (-40°C to +125°C).
- Packaging: 50 ft. (15.2m) lengths, individually cartoned.



PART NO.	I.D. (IN.)	I.D. (MM)	WORK PRESS. (PSI)
27210	3/8	9.5	85
27211	1/2	12.7	85
27212	5/8	15.8	85
27213	3/4	19.0	85

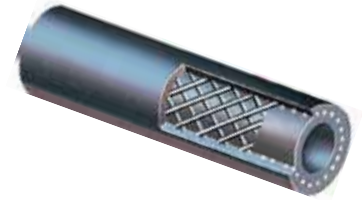
**Note:** Federal law requires registration with the Department of Transportation for anyone producing air brake hose assemblies with swaged or crimped fittings.



  **POWER BRAKE VACUUM HOSE**

Light-duty hose specially engineered for power brake applications on passenger cars and light trucks.

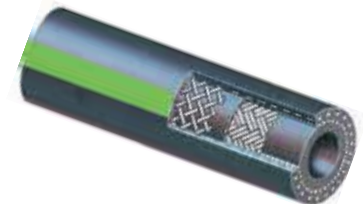
- Complies with DOT FMVSS 106VL. Meets SAE 1403 Type L.
- Ozone-resistant EPDM cover.
- Textile reinforcement.
- Vacuum rating 30 In. /Hg.
- Temperature rating: -40°F to +257°F (-40°C to +125°C).



I.D. (IN.)	I.D. (MM)	WORK PRESS. (PSI)	PART NO. 3 FT	PART NO. 50 FT
11/32	8.7	85	27232	27230
15/32	11.9	85	27233	27231

 **HEAVY-DUTY GREEN STRIPE™ AIR BRAKE HOSE**

- Comptible with standard air brake couplings.
- Neoprene construction is oil resistant.
- Two-braid rayon reinforced construction with smooth cover.
- Exceeds SAE J1402 and Bendix specifications.
- Complies with DOT FMVSS 106 requirements.



PART NO.	I.D. (IN.)	I.D. (MM)	WORK PRESS. (PSI)	LENGTH FT
27220	3/8	9.5	225	50
28304	3/8	9.5	225	250
27221	1/2	12.7	225	50



## NYLON AIR BRAKE TUBING

Recommended for truck, bus and mobile air brake, and service lines where heat and battery acids are not present. Conforms to SAE J844 specifications. Meets D.O.T. FMVSS 106.

- Tube: Heat and light stabilised seamless extruded nylon.
- Cover: Nylon. Available in black (NABTA), blue (NABTB), green (NABTG), red (NABTR), yellow (NABTY) and orange (NABTO) colors. Other colors available upon request.
- Temperature rating: -40°F to +200°F
- Couplings: Use Gates DOT SureLok™ (G31) or Gates DOT compression. (G32)  
Type A: Non-reinforced in sizes 1/8", 5/32", 3/16", and 1/4".



**Note:** Sizes 1/8" and 5/32" are NOT recognised by D.O.T. for air brake systems. These are for service lines only.

Type B: Reinforced with one open ply of fibrous nylon in sizes 5/16", 3/8", 1/2", 5/8" and 3/4".







## SURELOK™ FITTINGS

Recommended for compressed air connector on all nylon air brake tubing air brake systems at locations other than between chassis frame and axle or between towed and towing vehicle. Also recommended as a connector on all air operated systems as applicable to suspension, steering, engine, transmission and auxiliary mechanisms. Fittings and tubing comply to Department of Transportation Federal Motor Vehicle Safety Standard, (DOT FMVSS 106) (mandatory requirements for inch tube fittings in U.S.A.) Society for Automotive Engineers (SAE) J1131 (inch tube and fittings) and meet DIN 74324 and German TUV requirements (metric tube and fittings).

- Simple tube connection and disconnection.
- Fewer component parts – Internally machined form in body to secure collet.
- All collets marked with tube size.
- Ease of tube insertion in areas of restricted access.
- Total fittings system solution.
- Maximum Working Pressure: 0 to 150 psi.
- Working Temperature: -40 °F to +220 °F (-40 °C to +104 °C).



## SMALL AIR BRAKE ASSORTMENT

This small SureLok™ assortment is a basic starter package for the jobber or fleet. The SureLok coupling allows for repairs or replacement of J844 nylon air brake lines without the need of tools. Part No. A33001. Assortment contains:

- Four sizes of hose.
- 16 coupling configurations.
- 158 individual couplings.



## LARGE AIR BRAKE ASSORTMENT

The large SureLok™ assortment is perfect for the jobber or fleet. SureLok couplings allow for repairs or replacement of J844 nylon air brake lines without tools. Along with the SureLok couplings, this assortment features brass field attachable couplings for SAE J1402 DOT All hose. Part No. A33002. Assortment contains:

- Seven sizes of hose.
- 51 coupling configurations.
- 318 individual couplings.



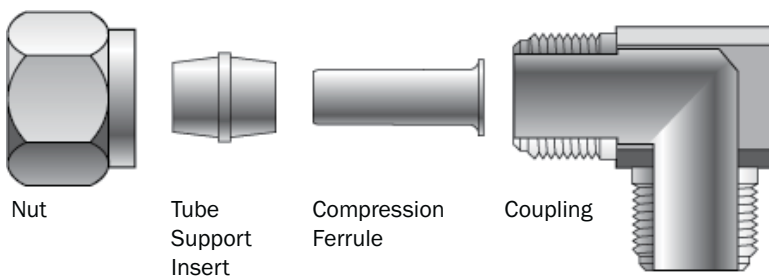


 **COMPRESSION FITTINGS**

Recommended for compressed air connector on all nylon air brake tubing air brake systems at locations other than between chassis frame and axle or between towed and towing vehicle. Also recommended as a connector on all air operated systems as applicable to suspension, steering, engine, transmission and auxiliary mechanisms. Fittings and tubing comply to Department of Transportation Federal Motor Vehicle Safety Standard, (DOT FMVSS571.106) (Mandatory requirements for inch tube fittings in U.S.A.) Society for Automotive Engineers (SAE J246) and (SAE J1131) (inch tube and fittings).

- Maximum Working Pressure: 150 psi.
- Working Temperature: -40°F to +200°F (-40°C to +100°C).
- Materials: Brass.
- Tubing: SAE J844 or DIN 74324.

Component Functions: The Gates compression coupling has four parts:



 **SMALL COMPRESSION ASSORTMENT**

Handy, small compression assortment is a basic starter package for the jobber or fleet. This assortment features brass compression couplings for J844 nylon air brake hose. Part No. A33003.

Assortment contains:

- Four sizes of hose.
- 31 coupling configurations.
- 211 individual couplings.



 **LARGE COMPRESSION ASSORTMENT**

The large compression assortment is perfect for the jobber or fleet. This assortment features both brass compression couplings for J844 nylon air brake hose and brass field attachable couplings for SAE J1402 DOT. Part No. A33004.

Assortment contains:

- Seven sizes of hose.
- 59 coupling configurations.
- 330 individual couplings.



# AIR CONDITIONING & REFRIGERATION SYSTEM

## POLARSEAL™ HOSE

Designed for environmentally safe R134a\* refrigerants in automotive air conditioning and industrial systems such as tractors, construction trucks, and mobile and stationary refrigeration units. Can be crimped with current AC die sets on MC4-20, PC707, 3000B and OmniCrimp 21 crimpers, or with the PolarSeal portable crimper.

- Minimises permeation of both R134a and R12 refrigerants.
- Cover is black synthetic EPDM rubber.
- Nylon barrier inside black chloroprene rubber tube is reinforced with spiraled polyester.
- Meets or exceeds SAE J2064 Type C. Class II.
- Temperature rating: -22°F to +257°F (-30°C to +125°C), Class II.



**Note:** For a complete listing of PolarSeal Hose and Couplings, see Gates Hydraulic Catalog 431-2080.

\* Beginning in 1995, all new air conditioning systems in cars, light trucks and industrial applications manufactured in North America must use R134a refrigerant.

## POLARSEAL™ II HOSE

PolarSeal II Hose is designed to be installed with PolarSeal II couplings and clamps. Meets SAE J2064 Type C, Class I - use with R12, R13A and R22 refrigerants. Recommended for air condition systems on school/transit buses, RV's, limos and other heavy equipment that has long run or hard to service AC lines. Elastomeric tube with fabric braid reinforcement. Cover is heat, moisture and ozone resistant.

- Temperature rating: -22°F to +257°F (-30°C to +125°C).
- Coupling Recommendation (See Crimp Data Manual 428-7365 or E.Crimp): PolarSeal™ II Coupling.



**Note:** For a complete listing of PolarSeal™ II Hose and Couplings, see Gates Hydraulic Catalog 431-2080.

## POLARSEAL™ AND POLARSEAL™ II COUPLINGS AND ACCESSORIES

OEM quality couplings in 64 configurations to fit most mobile refrigeration and air conditioning applications.

- Available in straight, 45° and 90° styles.
- Comes in male, female, flared, flareless and swivel ends to fit most popular applications.
- Four sizes of "O-Rings" especially compounded for R134a refrigerants.
- Five inline orifice tubes.



**Note:** For a complete listing of PolarSeal™ Couplings, see Gates Hydraulic Catalog 431-2080.

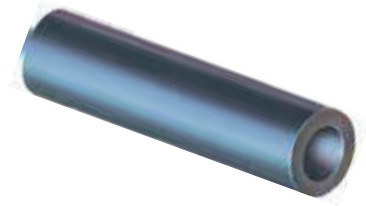


# WINDSHIELD WASHER & VACUUM SYSTEM

## WINDSHIELD WASHER, VACUUM AND RADIATOR OVERFLOW TUBING

Ideal for windshield washers, vacuum-operated accessories and radiator over flow.

- Vacuum and kink resistant construction.
- Vacuum rated to 24 In./Hg (610mm).
- Meets SAE J1037, J942b specifications.
- 25 psi working pressure.
- Temperature rating: -40° to +257°F (-40°C to +125°C).

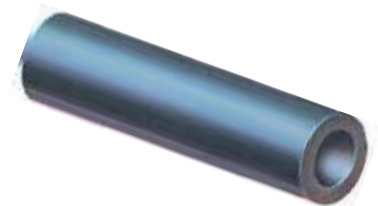


I.D.		NIPPLE SIZE		LENGTH				
INCH	MM	INCH	MM	3FT	6FT	25FT REEL	50FT REEL	250FT REEL
7/64	2.8	1/8	3.2	-	27037	-	27041	-
5/32	4	3/16	4.8	-	27038	-	27042	27035
7/32	5.6	1/4	6.4	-	27039	-	27043	27036
1/4	6.4	5/16	7.9	-	27040	-	27044	27044
5/16	7.9	3/8	9.5	27555	-	27050	-	-
3/8	9.5	7/16	11.1	27556	-	27053	-	-

## WINDSHIELD WIPER HOSE

Ideal for windshield washers, vacuum-operated accessories and radiator overflow applications.

- Reinforced construction for pressure applications. Kink and collapse resistant.
- EPDM tube and cover resists splitting or cracking during stem insertion.
- Temperature rating: -40°F to +257°F (-40° to +125°C) to 26 In./Hg.
- Packaging: 50 ft reels.



I.D. (IN.)	I.D. (MM)	WORK PRESS. (PSI)	NIPPLE SIZE (IN.)	NIPPLE SIZE (MM)	PART NO.
5/32	3.9	50	3/16	4.8	27072
7/32	5.5	50	1/4	6.3	27073
1/4	6.3	50	5/16	7.9	27074



  **CLAMSHELL PACKAGING**

Several sizes of windshield washer and vacuum tubing in self-service, recyclable packaging.

- Can be displayed on pegboard.

PART NO.	I.D. (IN.)	I.D. (MM)	NIPPLE SIZE (IN.)	NIPPLE SIZE (MM)	LENGTH (IN.)
27037	7/64	2.7	1/8	3.2	72
27038	3/32	3.9	3/16	4.8	72
27039	7/32	5.5	1/4	6.3	72
27040	1/4	6.3	5/16	7.9	72
27555	5/16	7.9	3/8	9.5	36
27556	3/8	9.5	7/16	11.1	36



  **SILICONE VACUUM TUBING (EGR HOSE) AND DPF**

Specially formulated silicone rubber. High temperature resistance assures long service life in harsh environments.

- Extremely flexible and kink resistant.
- Also used to transfer air, water and coolant for exhaust gas recirculation.
- Orange color for easy identification.
- Temperature rating: +300°F (+149°C) to 25 In./Hg. Possible reduced capacity above +300°F; Maximum +400°F (+204°C).



PART NO.	I.D. (IN.)	I.D. (MM)	NIPPLE SIZE (IN.)	NIPPLE SIZE (MM)	MIN. BEND RADIUS (IN.)	MIN. BEND RADIUS (MM)
27075	7/64	2.7	1/8	3.2	1	25
27076	5/32	3.9	3/16	4.8	1 1/2	38
27077	7/32	5.5	1/4	6.3	1 1/2	38
27078	1/4	6.3	5/16	7.9	1 1/2	38

  **WET ARM WIPER TUBING**

One size, small outside diameter washer tubing designed as an integral part of windshield wiper systems. Same construction as windshield washer and vacuum tubing.

- Meets SAE J1037, J942b specifications.

I.D. (IN.)	I.D. (MM)	NIPPLE SIZE (IN.)	NIPPLE SIZE (MM)	PART NO. 72 IN. CLAMSHELL	PART NO. 50 FT. REEL
3/32	2.4	1/16	1.6	27030	27045





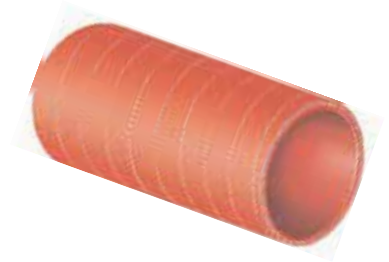
# AIR & DEFROSTER SYSTEM



## TURBOCHARGER HOSE

Specially compounded for use as a short, flexible connector between the air intake and the turbocharger. Can also be used for turbocharger air discharge. Approved for Marine Applications.

- Silicone elastomer inner liner reinforced with woven fiberglass fabric and coated with orange silicone rubber.
- Resists high temperatures and pressures.
- Resists coolants, weathering and ozone.
- Highly visible orange color helps distinguish this hose from engine coolant hose.
- Temperature rating: -60°F to +500°F (-51° to +260°C).



TURBOCHARGER HOSE					
I.D. (IN.)	I.D. (MM)	PART NO.	LENGTH (IN.)	LENGTH (MM)	WORK PRESS. (PSI)
1	25	26116	36	914	45
1 1/2	38	26124	36	914	40
1 3/4	44	26128	36	914	35
2	51	26132	36	914	35
2 1/4	57	26136	36	914	30
2 3/8	60	26138	36	914	30
2 1/2	64	26140	36	914	30
2 5/8	67	26142	36	914	15
2 3/4	70	26144	36	914	25
3	76	26001	3	76	25
3	76	26148	36	914	25
3 3/8	86	26002	3 1/2	89	15
3 3/8	86	26003	6	152	15
3 3/8	86	26154	36	914	15
3 1/2	89	26004	3	76	30
3 1/2	89	26156	36	914	20
3 3/4	95	26160	36	914	15
3 7/8	98	26162	36	914	15
4	102	26164	36	914	15
4 1/2	114	26166	36	914	15
5	127	26007	3 1/2	89	15
5 1/2	140	26008	3 1/2	89	15



 **MOULDED TURBO CHARGER HOSE**

The aftermarket solution for turbocharger hose replacement in one complete pack. All the parts needed for complete repair - nothing more, nothing less.

- Turbocharge hose feature multi-layer construction for maximum durability and strength.
- Resists high temperatures, high pressures & oil permeation.
- Absorbs and isolates vibrations and shock.



 **TURBOCHARGER REDUCER HOSE**

Turbocharger Reducer Hose features silicone coated meta-aramid fabric with stainless steel pressure retention rings where applicable.

- Meta aramid reinforcement provides flexibility and strength for long life in demanding high temperature applications.
- High quality silicone cover provides superior service life and excellent heat resistance up to 260°.
- Available in the the most common heavy-duty turbocharger reducer hose sizes up to 4.5" in diameter.



PART NO.	I.D.1 x 1.D.2 x LENGTH (IN.)	I.D.1 x 1.D.2 x LENGTH (MM)	HOSE TYPE
26315	2.1/2" x 3.1/2" x 5.1/4"	64 x 89 x 133	Ring Retained
26317	2.1/2" x 3" x 4"	63 x 76 x 101	
26318	3" x 3.1/2" x 5"	76 x 89 x 127	Ring Retained
26319	3" x 4" x 6.1/4"	76 x 101 x 158	Ring Retained
26320	3.1/2" x 4" x 6"	89 x 101 x 152	Ring Retained
26321	4" x 4.1/2" x 6"	101 x 114 x 152	
26322	4" x 4.1/2" x 7"	101 x 114 x 177	Ring Retained



 **GREEN STRIPE™ RING RETAINED TURBOCHARGER HOSE**

Made for turbocharged Class 8 and heavy-duty diesel engines. Multi-hump design isolates vibration and absorbs rotational shock. Depending on application, hose is engineered with three or four rings to maintain design integrity.



- Four layer silicone construction with aramid fibre reinforcement for maximum durability.
- Meets or exceeds OEM specifications.
- Temperature rating: -60 °F to +500 °F (-51 °C to +260 °C).

PART NO.	I.D. (IN.)	I.D. (MM)	LENGTH (IN.)	LENGTH (MM)	WORK PRESS. (PSI)
26200	3	76	6	152	25
26201	3 1/2	89	6	152	25
26203	4	101	6	152	25
26204	4	101	6	152	25

 **DEFROSTER/AIR INTAKE HOSE**

For defrosters, air ducts, air intakes, under-hood applications and other low pressure, low suction applications. Approved for marine applications.



- Propylene-ethylene reinforced with one polypropylene helix.
- Easily cut and formed to desired shape and length.
- Tear, abrasion and ozone resistant.
- Complies with DOT FMVSS 302.
- Temperature rating: -40 °F to +200 °F (-40 °C to +93 °C).

I.D. (IN.)	I.D. (MM)	PART NO.
1 1/4	31.8	23820
1 1/2	38.1	23824
1 3/4	44.5	23828
2	50.8	23832
2 1/4	57.2	23836

I.D. (IN.)	I.D. (MM)	PART NO.
2 1/2	63.5	23840
2 3/4	69.9	23844
3	76.2	23848
3 1/4	82.6	23850
3 1/2	88.9	23856

I.D. (IN.)	I.D. (MM)	PART NO.
4	101.6	23864
4 1/2	114.3	23872
5	127	23880
6	152.4	23896

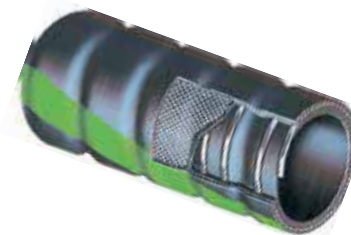




 **GREEN STRIPE™ HEAVY-DUTY AIR VENT HOSE**

Specifically designed for air cleaner-to-engine connections and other ducting applications.

- Heat and oil-resistant tube.
- Flexible, helical wire reinforced.
- Cover is heat, oil and abrasion resistant.
- Smooth interior offers minimum air resistance for maximum efficiency.
- Easily cut with knife and wire cutters.
- Temperature rating: -40 °F to +257 °F (-40 °C to +125 °C).
- Packaging: 10ft (3.05m) lengths. Individually cartoned.



**Caution:** Not recommended for conveying liquids.

PART NO.	I.D. (IN.)	I.D. (MM)	WORK PRESS. (PSI)	VACUUM RATING (IN./Hg.)
24324	4	101	10	7
24325	4 1/2	114	10	7
24326	5	127	10	6
24327	5 1/2	140	10	6

**PVC AIRLINE HOSE**

Gates light weight PVC airline hose is suitable for air impact tools and general service applications. Fitment is easy with Gates, as the hose is pre-fitted with BSPT fittings for quick fitment of airline connectors.

The hose is made with polyester cord reinforcement providing flexibility and durability and comes in a 20 metre length, so that it can be used in longer distances. In addition, the hose is grease, oil and abrasion resistant. Gates PVC Airline hose also comes with the added protection of a 1 year warranty.

- Available in 3 popular sizes including 5/16", 3/8" & 1/2".
- Offered in 20 metre lengths - allows for use in longer distances.
- Retail friendly packaging.
- Temperature rating: -140 °C to +60 °C.
- Maximum working pressure: 300 psi.
- Meets or Exceeds AS/NZS 2554 class B.



PART NO.	GHPVC3820	GHPVC51620	GHPVC1220
<b>DESCRIPTION</b>	3/8" - PVC Airline Hose (1/4" BSP)	5/16" - PVC Airline Hose (1/4" BSP)	1/2" - PVC Airline Hose (3/8" BSP)
<b>HOSE SIZE</b>	3/8" (10mm)	5/16" (8mm)	1/2" (12mm)
<b>FITTING SIZE</b>	1/4" BSP	1/4" BSP	3/8" BSP
<b>LENGTH</b>	20 metres	20 metres	20 metres
<b>CARTON QTY</b>	10	10	5



### AV SERIES AIR VENT HOSE

Specifically designed for air cleaner-to-engine connections and other ducting applications.

- Available in pre-formed hump (similar to Vibraflex™), straight and curved configurations.
- Heat and oil resistant.
- Temperature rating: -40°F to +225°F.



STYLE	PART NO.	(I.D. x LENGTH) (IN.)	(I.D. x LENGTH) (MM)
Hump	23002	4 x 5	102 x 127
	23004	5 x 6	127 x 52
	23005	5 1/2 x 6	140 x 152
	23006	6 x 5	152 x 127
Reducer Hump	23100	3 1/2 x 3 x 5 1/4	89 x 76 x 133
	23101	4 x 3 x 5 1/4	102 x 76 x 133
	23106	6 x 5 1/2 x 6	152 x 140 x 152
	23107	7 x 6 x 5	178 x 152 x 127
Straight Flexible	23400	4 x 22	102 x 559
	23401	6 x 19	152 x 483
	23402	6 1/8 x 19	156 x 483

STYLE	PART NO.	(I.D. x LENGTH) (IN.)	(I.D. x LENGTH) (MM)
Molded Elbow	23201	3 x 5 1/4 x 90°*	76 x 133 x 90°
	23202	3 1/2 x 5 1/2 x 45°	89 x 140 x 45°
	23203	3 1/2 x 5 1/2 x 90°*	89 x 140 x 90°
	23208	5 x 5 1/4 x 45°	127 x 133 x 45°
	23209	5 x 6 x 90°	127 x 152 x 90°
	23215	6 x 6 1/2 x 45°*	152 x 165 x 45°
	23216	6 x 7 1/2 x 45°*	152 x 191 x 45°
	23218	6 x 7 x 90°	152 x 178 x 90°
	23221	7 x 7 1/2 x 90°	178 x 191 x 90°
	Reducer Elbow	23300	6 x 5 1/2 x 90°

\*Ribbed

### EMISSION CONTROL DUCT HOSE

Connects hot air from exhaust manifold shroud to air cleaner for efficient control of emissions. Helps eliminate carburetor icing and improves engine warm-up.

- Aluminum polyester construction for economy.
- Fibreglass aluminum (black) for greater strength and durability.
- Completely flexible and easily bent, yet retains shape after forming.
- Resists heat, cold, oil and water.
- Cuts with knife for easy installation.
- Install with or without clamps.
- Temperature rating: -40°F to +400°F (-40°C to +204°C).



PART NO.	I.D. (IN.)	I.D. (MM)	LENGTH (IN.)	LENGTH (MM)
28092	3/4	19	36	914
28085	7/8	212	36	914
28093	1 1/2	38	18	457
28088	1 1/2	38	36	914
28094	1 3/4	44	18	457
28089	1 3/4	44	36	914

PART NO.	I.D. (IN.)	I.D. (MM)	LENGTH (IN.)	LENGTH (MM)
28095	2	51	18	457
28090	2	51	36	914
28091	1 37/67	40	39	1000
28082	1 31/32	50	39	1000
28081	2 23/64	60	39	1000



## AIR VENT HOSE

Light-duty hose for air cleaner-to-engine connections, defroster ducts and air or heater ducting.

- Extremely flexible.
- Helical wire construction.
- Heat and oil resistant tube.
- Temperature rating: -40 °F to +212 °F (-40 °C to +100 °C).



**Note:** For abrasive environments use Gates Green Stripe™ Heavy-Duty Air Vent Hose.

**Caution:** Not recommended for conveying liquids.

PART NO.	I.D. (IN.)	I.D. (MM)	WORK PRESS. (PSI)	VACUUM RATING (IN./Hg.)
24300	5/8	16	10	5
24301	3/4	19	10	5
24302	7/8	22	10	5
24303	1	25	10	5
24304	1 1/4	32	10	5
24305	1 3/8	35	10	5
24306	1 1/2	38	10	5
24307	1 5/8	41	10	5
24308	1 3/4	44	10	5
24309	1 7/8	48	10	5
24310	2	51	5	3
24311	2 1/8	54	5	3
24312	2 1/4	57	5	3
24313	2 3/8	60	5	3
24314	2 1/2	64	5	3
24315	2 5/8	67	5	3
24316	2 3/4	70	5	3
24317	3	76	5	3
24318	3 1/2	89	5	3
24319	3 5/8	92	5	3
24320	4	102	5	3
24321	4 1/2	114	5	3
24322	5	127	5	3
24323	5 1/2	140	5	3



### DIESEL EMISSION FLUID (DEF) HOSE ASSEMBLIES

Diesel Emission Fluid (DEF) Hose Assemblies are specially designed and manufactured to convey Diesel Emission Fluid (DEF). Because DEF freezes at +11 °F (-12 °C), the hose and couplings are electronically heated using Gates revolutionary carbon fibre heating system.

- Patent-pending carbon fibre heating system provides faster thaw times, lower amp draw and more uniform heating than OE heated-wire designs.
- Dense, closed-cell EPDM cover resists cuts and abrasion better than typical OE replacements, for longer life in harsh environments.
- Over-moulded quick connects keep dirt and grime out of critical connections to prevent premature system failure.
- Heating and electrical connection per OE specifications.



### DIESEL EMISSION FLUID (DEF) TANK FILL HOSE

DEF Tank Transfer Hose is manufactured for the specific filling functions of DEF tanks. They feature the highest quality construction to meet the demands of DEF handling and transfer.

- 3/4" and 1" standard I.D. sizes.
- Temperature rating: -40 °F to +212 °F (-40 °C to +100 °C).
- Non-zinc, peroxide-cured EPDM.
- Gates DEF hose can be used with PVC fittings and stainless steel clamps, but Gates stainless steel coupling line provides a more durable and permanent solution.



PART NO.	DESCRIPTION
DEF750025	3/4" DEF Hose 25'
DEF750300	3/4" DEF Hose 300'
DEF100025	1" DEF Hose 25'
DEF100025	1" DEF Hose 300'



# SERVICE HOSE

## MULTI-USE HOSE

For handling lower pressure air, water, agricultural spraying, oil or grease.  
Can also be used for air spray painting.

- Nitrile tube and cover provide high oil resistance.
- One braid polyester cord reinforcement.
- Temperature rating: 0°F to +212°F (-18°C to +100°C).



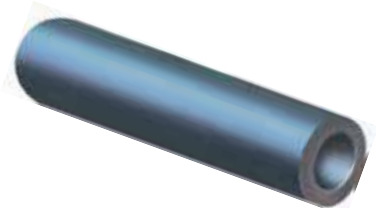
**Caution:** Not recommended for use as small I.D. by-pass, coolant and heater hose.  
Do not use for fuel transfer applications.

PART NO. 50 ft.	PART NO. 300 ft.	I.D. (IN.)	I.D. (MM)	WORK PRESS. (PSI)	BRAID
27402	28652	1/4	6.3	315	1
27404	28657	5/16	7.9	315	1
27406	28661	3/8	9.5	315	1
27410	28665	1/2	12.7	315	1
27414	28667	5/8	15.9	315	1
27418	28671	3/4	19	315	1
27420	28765	1	25	315	1

## SIGNAL CALL TUBING

Designed for driveway signal devices in service stations and garages.

- Long-lasting EPDM rubber tubing specially built to register under the slightest pressure.
- Withstands vehicle weight at temperatures up to +150°F (+66°C).
- Meets SAE J1037, J942b specifications.



PART NO.	I.D. (IN.)	I.D. (MM)	LENGTH (FT.)	LENGTH (M)
27539	3/8	9.5	50	15
28681	3/8	9.5	100	30
28686	3/8	9.5	300	91

# FLEET ACCESSORIES

## HEAVY-DUTY HOOD LATCH KIT

Universal hood latch kit for medium and heavy-duty applications.  
Part No. 90350.

- Kit includes anti-rattle nub.
- Brackets are made from hot-rolled steel with clear zinc chromate plating for superior corrosion resistance.
- Hood latch is made of EPDM rubber which is specially formulated to resist ozone for long service life.



# MERCHANDISERS & SALES AIDS

## INTERACTIVE ABDS/SBDS SYSTEM DISPLAY

Engage your customers with a hands-on display to facilitate conversations about the benefits of complete system repairs for the timing and accessory belt drive systems. Part No. 91078.

- 3D unit has a real belt and moving system components.
- Compact countertop size:
  - 457mm x 254mm x 76mm deep.
  - Footprint 254mm x 305mm (base is 178mm x 305mm).
  - Lightweight but durable construction.



## BELT FINGER RACK

Display allows dealers to display more belts in less space. Part No. 91530.

- Racks easily screw to the wall, then all you do is slide over the finger.
- Includes: 5 x 3' metal finger racks (enough for 250 V-belts), mounting screws, and wall spacers.



## HOSE HANGERS

Convenient plastic hook hangers that can quickly be attached and detached from individual hoses for storage and/or display. Part No. 91999.

- 50 per package.
- Will not damage hose.





### FUEL AND VACUUM HOSE MERCHANDISER

Compact, free standing merchandiser containing 3 fast selling hose sizes for fuel, PCV and EEC applications, plus 3 popular sizes of tubing for windshield washer and vacuum applications.

- Hose ends are located by size.
- Hose measurement chart along the front of the merchandiser.
- Part No. 91140.



PART NO.	DESCRIPTION	QTY
27002	1/4" (6mm) Fuel Line	1
27003	5/16" (8mm) Fuel Line	1
27004	3/8" (9.5mm) Fuel Line	1
27042	5/32" (4mm) Vacuum Tubing	1
27043	7/32" (5.5mm) Vacuum Tubing	1
27044	1/4" (6mm) Vacuum Tubing	1

### EFI & VACUUM HOSE MERCHANDISER

Compact, free standing merchandiser containing 3 fast selling hose sizes for fuel, PCV and EEC applications, plus 3 popular sizes of tubing for windshield washer and vacuum applications.

- Hose ends are located by size.
- Hose measurement chart along the front of the merchandiser.
- Part No. 91140EV.



PART NO.	DESCRIPTION	QTY
27339	1/4" (6mm) Barricade EFI Fuel Line	1
27340	5/16" (8mm) Barricade EFI Fuel Line	1
27341	3/8" (9.5mm) Barricade EFI Fuel Line	1
27042	5/32" (4mm) Vacuum Tubing	1
27043	7/32" (5.5mm) Vacuum Tubing	1
27044	1/4" (6mm) Vacuum Tubing	1

### HEATER HOSE MERCHANDISER

**The perfect way to display heater hose in your showroom.**

Gates merchandiser has wire racks to hold 3 cartons of Gates Charter Heater Hose. There is also space on top of the merchandiser to place your Gates Fuel Hose Merchandiser.

- Comes complete with 2 cartons each of 28400, 28401 and 28402.
- Part No. HHM-6.







## CURVED HOSE RACKING

Wall mounted racking designed for retail, trade and distributor use. Sturdy metal construction, powder coated in red. GHR-10 for O5 series radiator Hose and GHR-14 for O2 series small bore hose.



## BELT RACKING - DK12

Convenient racking used to display Gates industrial & automotive belts on display walls or in warehouses.

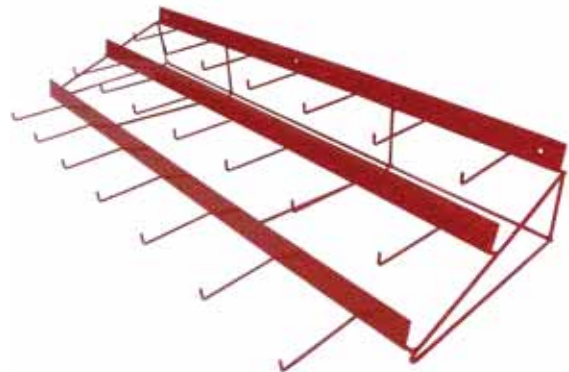
- Supplied as box of 12 x 1 metre black strips (including hooks).
- Part No. DK12.



## BELT RACKING (TIERED)

Convenient in-store racking used to display Gates industrial & automotive belts, consisting of 21 hooks to hang product.

- Dimensions: 1000mm (W) x 125mm (H) x 420mm (D).
- Part No. GBM-1RR.





## SILICONE COOLANT HOSE MERCHANDISER

Gates offers high quality, 4-ply silicone coolant hose (in straight and elbow sections) in the industry standard blue colour to perform in demanding conditions. Straight sections are available in two varieties of recommended operating temperatures (176 °C & 260 °C); while elbows (45 °C & 90 °C) sections are engineered to perform at a recommended operating temperature of 176 °C. Gates silicone hoses will keep your fleet moving by reducing down-time and lowering cost-per-kilometre.

CONTENTS OF THE MERCHANDISER (PART #: GSSEHM-26):

- Top 12 x straight 3' lengths, 8 x 90° elbows, 6 x 45° elbows.



I.D. (IN.)	GATES PART NUMBER	DESCRIPTION	QUANTITY
3/4	24812	SILICONE COOLANT HOSE	1
7/8	24814	SILICONE COOLANT HOSE	1
1	24816	SILICONE COOLANT HOSE	1
1 1/4	24820	SILICONE COOLANT HOSE	1
1 1/2	24824	SILICONE COOLANT HOSE	1
1 3/4	24828	SILICONE COOLANT HOSE	1
2	24832	SILICONE COOLANT HOSE	1
2 1/4	24836	SILICONE COOLANT HOSE	1
2 3/8	24838	SILICONE COOLANT HOSE	1
2 1/2	24840	SILICONE COOLANT HOSE	1
2 3/4	24844	SILICONE COOLANT HOSE	1
3	24848	SILICONE COOLANT HOSE	1
1 3/4	28205	45° SILICONE ELBOW	1
2 1/2	28200	45° SILICONE ELBOW	1
2 3/4	28201	45° SILICONE ELBOW	1
3	28202	45° SILICONE ELBOW	1
3 1/2	28203	45° SILICONE ELBOW	1
4	28204	45° SILICONE ELBOW	1
1 3/4	28217	90° SILICONE ELBOW	1
2	28210	90° SILICONE ELBOW	1
2 1/4	28211	90° SILICONE ELBOW	1
2 1/2	28212	90° SILICONE ELBOW	1
2 3/4	28213	90° SILICONE ELBOW	1
3	28214	90° SILICONE ELBOW	1
3 1/2	28215	90° SILICONE ELBOW	1
4	28216	90° SILICONE ELBOW	1



### V-BELT AND MICRO-V® BELT MERCHANDISER

**Consists of the Top 10 Micro-V® and V-Belt Part Numbers.**  
 This space saving design can be wall mounted and is a great way of promoting Gates Automotive Belt Products to your customers.

- Suits popular Australian and New Zealand vehicle applications.
- Part No. GVMVM-1.



### VULCO-FLEX™ MERCHANDISER

It easily replicates the angles and planes of a wide variety of expensive original equipment coolant hose, for quick and easy replacement.

GVFM-16	
	QTY
25473	1
25252	1
25476	1
25253	1
26611	1
25480	1
26612	1
25255	1
26502	1
25305	1
25477	1
25250	1
25532	1
HEADER BOARD	1
HOSE HOOKS (x50)	1





### GREEN STRIPE™ VULCO-FLEX™ COOLANT HOSE MERCHANDISER

■ Part No. GGSVF-12.

GGSVF-12	
	QTY
26510	1
26511	1
26512	1
26516	1
26521	1
26522	1
26523	1
26524	1
26525	1
26528	1
26531	1
26532	1
HEADER BOARD	1
HOSE HOOKS (x50)	1





### HOSE CLAMPS MERCHANDISER 57 SERIES

Perfect way to display your full clamp product line. Merchandiser features 8 different clamp sizes with 160 clamps in total. Merchandiser features a shelf at the bottom to store additional clamps for convenient refill. Each merchandiser comprises 20 each of the following hose clamp part numbers.

IHCM-1	
IDEAL PART NO.	CLAMPING RANGE
52F15	13-15mm
6204	6-16mm
6206	8-22mm
5710	13-27mm
5712	13-32mm
5716	18-38mm
5724	26-51mm
5728	32-57mm



### HOSE CLAMPS MERCHANDISER 67 SERIES

All Stainless Steel Hose Clamps (300 Series S/S Marine Grade) range. The merchandiser features 7 part numbers with a total of 160 clamps. It also features a shelf at the bottom to store additional clamps. Each merchandiser comprises 40 - 62604 clamps and 20 each of the following hose clamp part numbers.

ISSHCM-1	
IDEAL PART NO.	CLAMPING RANGE
62604	6-16mm
62606	8-22mm
6710	13-27mm
6712	13-32mm
6716	19-38mm
6724	26-50mm
6728	34-57mm





### T-BOLT CLAMPS MERCHANDISER 32 SERIES

The T-Bolt Merchandisers contain 18 popular sizes from 23-25mm to 113-121mm (4 of each size = 72 Clamps).

The merchandiser can be displayed on a pegboard or mounted on the wall.

Available in 32 Series style clamp (partial Stainless Steel) and 33 Series (full Stainless Steel).



ITBM - 1	
IDEAL PART NO.	CLAMPING RANGE
3223	23 - 25mm
3226	26 - 28mm
3229	29 - 31mm
3232	32 - 35mm
3236	36 - 39mm
3240	40 - 43mm
3244	44 - 47mm
3248	48 - 51mm
3252	52 - 55mm

ITBM-1	
IDEAL PART NO.	CLAMPING RANGE
3256	56 - 59mm
3260	60 - 63mm
3264	64 - 67mm
3268	68 - 73mm
3274	74 - 79mm
3280	80 - 85mm
3286	86 - 91mm
32104	104 - 112mm
32113	113 - 121mm



### T-BOLT CLAMPS MERCHANDISER 33 SERIES

ISSTBM-1	
IDEAL PART NO.	CLAMPING RANGE
3323	23 - 25mm
3326	26 - 28mm
3329	29 - 31mm
3332	32 - 35mm
3336	36 - 39mm
3340	40 - 43mm
3344	44 - 47mm
3348	48 - 51mm
3352	52 - 55mm

ISSTBM-1	
IDEAL PART NO.	CLAMPING RANGE
3356	56 - 59mm
3360	60 - 63mm
3364	64 - 67mm
3368	68 - 73mm
3374	74 - 79mm
3380	80 - 85mm
3386	86 - 91mm
33104	104 - 112mm
33113	113 - 121mm





  **HEATER HOSE CONNECTOR ASSORTMENT**

Sturdy impact-resistant plastic case holds an assortment of 36 hose connectors for 1/4" through 3/4" I.D. hose. Part No. 91175.

- Case opens from either side.
- Handy plan-o-gram inside both lids identifies location of each type and size connector.
- Assortment contains two each elbow, straight, and "T" connectors.
- Provides convenient storage for complete line of connectors.



PART NO.	DESCRIPTION	O.D. (IN.)	O.D. (MM)
28600	Straight Connector	5/16	8.0
28602	Straight Connector	3/8	9.5
28603	Straight Connector	1/2	12.7
28604	Straight Connector	5/8	15.9
28605	Straight Connector	3/4	19.0
28606	Straight Connector	1	25.4
28620	Elbow Connector	5/16	8.0
28622	Elbow Connector	3/8	9.5
28623	Elbow Connector	1/2	12.7
28624	Elbow Connector	5/8	15.9

PART NO.	DESCRIPTION	O.D. (IN.)	O.D. (MM)
28625	Elbow Connector	3/4	19.0
28626	Elbow Connector	1	25.4
28630	Tee Connector	5/16	8.0
28632	Tee Connector	3/8	9.5
28633	Tee Connector	1/2	12.7
28634	Tee Connector	5/8	15.9
28635	Tee Connector	3/4	19.0
28638	Tee Connector	1	25.4

2 of each in all.

  **FUEL HOSE CONNECTOR ASSORTMENT**

Upgraded component range to match Gates heater hose offerings. Part No. 91174.

- Inside cover plan-o-gram easily identifies the location of each type and size connector.
- Premium storage container can be connected to create a double-sided unit.
- Includes: Plastic box and 2 each of 28561, 28562, 28563, 28564, 28600, 28601, 28602, 28603, 28571, 28581, 28572, 28582, 28573, 28583, 28574, 28584, 28621, 28631, 28620, 28630, 28622, 28632, 28623, 28633.



PART NO.	DESCRIPTION	O.D. (IN.)	O.D. (MM)
28561	Straight Connector	3/32	2.4
28562	Straight Connector	1/8	3.2
28563	Straight Connector	5/32	4.0
28564	Straight Connector	3/16	4.8
28591	Reducer	3/32 - 1/8	2.4 - 3.2
28551	"Y" Connector	3/32	2.4
28571	Elbow	3/32	2.4
28572	Elbow	1/8	3.2
28573	Elbow	5/32	4.0

PART NO.	DESCRIPTION	O.D. (IN.)	O.D. (MM)
28574	Elbow	3/16	4.8
28592	Reducer	1/8 - 5/32	3.2 - 4.0
28552	"Y" Connector	1/8	3.2
28581	Tee	3/32	2.4
28582	Tee	1/8	3.2
28583	Tee	5/32	4.0
28584	Tee	3/16	4.8
28593	Reducer	3/16 - 1/4	4.8 - 6.4
28554	"Y" Connector	3/16	4.8

# PROFESSIONAL TOOLS

## TIMING BELT INSTALLATION TOOLS

Belt maintenance, replacement and installation kept easy with Gates expert tool range. Gates range of timing belt installation tools are high quality tools that will not only help you complete the task quicker, but will also give you peace of mind that the job has been done right.

The range includes universal and engine specific tools for popular vehicles in the Australian and New Zealand markets.

Gates expert tool range makes accurate belt installation, tensioning, alignment and drive system maintenance simple and straightforward. With no premature failures, rectification time or lost sales, watch your business become more efficient.



PART NO.	TOOL
GAT3054-10	DIAL TEST INDICATOR
GAT3398	FLYWHEEL HOLDING TOOL
GAT4358	FLYWHEEL HOLDING TOOL
GAT4359	FLYWHEEL HOLDING TOOL
GAT4377	INJPUMP PULLEY REMOVER
GAT4388A	TIMING TOOL KIT
GAT4394	SPROCKET HOLDING TOOL
GAT4404C	TIMING MOUNTING TOOL
GAT4454	TIMING TOOL KIT
GAT4455	TIMING TOOL KIT
GAT4510	TIMING TOOL KIT
GAT4519	TDC POSITIONING TOOL
GAT4523	FLYWHEEL HOLDING TOOL
GAT4528	FLYWHEEL HOLDING TOOL
GAT4576	CRANK PULLEY TOOL
GAT4620	TIMING TOOL KIT

PART NO.	TOOL
GAT4623	CAM PULLEY LOCK. TOOL
GAT4629	CRANK PULLEY SET
GAT4657	TIMING TOOL KIT
GAT4695	UNI & MULTI LOCK KIT
GAT4736	CRANKSHAFT PULLEY HOLDING TOOL
GAT4740	TIMING TOOL KIT
GAT4741	FRONT END SUPPORT SET
GAT4844	SPROCKET HOLDING TOOL
GAT4848	CAM SPROCKET REMOVER
GAT4910	TIMING TOOL KIT
GAT4923	CAM PULLEY LOCKING TL
GAT4924	IDLER PULLEY WRENCH
GAT4955	OAP INSTALL/REMOVE ADAPTOR KIT
GAT4960	TIMING TOOL KIT
GAT91010	TENSIONER PIN SET
GATV501A	WATER PUMP ADJUSTER

## HYDRAULIC TENSIONER PIN SET

A Gates exclusive that is a must have for every technician. Hydraulic timing belt tensioners need to be compressed during service. Many technicians use a drill bit or allen wrench to hold tensioners in their compressed state, which can be dangerous and may bend or damage tools. Part No. 91010.

- Hardened spring steel to hold the strongest tensioners.
- Conveniently mounted on key chain with six different sizes to service a variety of applications.
- Holds certain accessory belt tensioners and timing chain tensioners in place during service.







### TIMING BELT SPACER TOOL

The Timing Belt Spacer Tool allows proper clearance between belt and guide plate on 1997 and newer Subaru manual transmission equipped engines. Available in Gates Timing Component Kits.

- Prevents excessive heat, belt wear, and eventual engine failure.



### SUBARU STRETCHFIT™ BELT INSTALLATION TOOL

The 2008-11 Subaru Impreza, Forester and Outback with 2.5L engines utilise Stretch Fit belt technology on the A/C compressor drives. Gates leads the way as the only U.S. aftermarket supplier to offer coverage for these vehicles. This tool is required for proper installation to avoid damaging the belt. Unlike the OE belt, this tool is available separately so that the technician isn't forced to buy a tool every time a belt is installed. Part No. 91031.



### STRETCH FIT™ BELT INSTALLATION TOOLS

Installation tool for Gates Stretch Fit™ belts. The belt can be damaged if the right tools are not used.

- Installation instructions online.



PART NO.	PART NO.	PART NO.
91030	SFT004	SFT006
SFT061	SFT005	91032
SFT002		



### ACCESSORY BELT INSTALLATION TOOL

Time-saving tool affords improved control and reach when installing accessory belts. Also helps install V-belts and timing belts located in difficult-to-reach areas. Part No. 91209.

- Dual-pin design affords convenient belt push/pull capability.
- Tool's handle lends easy twisting control of belt in hard-to-reach places.





### BELT WEAR GAUGE

Like tyres, EPDM V-ribbed belts wear out gradually, steadily losing rubber material. This unique tool is designed to help inspect accessory belts for wear. EPDM belts, installed by original equipment manufacturers on new vehicles, typically do not show obvious signs of wear such as cracking. Contact your local Gates representative or visit [www.gatesaustralia.com.au/beltwear](http://www.gatesaustralia.com.au/beltwear) to request your free tool. Part No. BELT-WEAR-GAUGE.



### V-RIBBED BELT STRAP PULLEY WRENCH

Revolutionary tool allows technicians to easily remove stubborn drive pulleys. Part No. 910131.

- Specifically designed to grasp and hold automotive SAE V-ribbed belt driven pulleys.
- Simple to use, it is fabricated with a heavy-duty aluminum alloy handle, enabling plenty of gripping force on a pulley via the plastic composite locking head.
- The specially constructed V-ribbed strap, with its high coefficient of friction, settles into pulley grooves or flattens against the smooth surface of a pulley, providing the utmost grasping control and allowing the user to easily remove stubborn drive pulleys from accessories.



### V-RIBBED BELT LENGTH FINDER

Handy tool measures every accessory belt made to help determine replacement belt for cars, light trucks, buses, heavy trucks and other equipment. Part No. 91202.

- Telescopes out to measure up to 120" (3048mm) belts. Compact 3 ft. (914mm) length when closed.
- Accurate, lightweight and easy to use.
- For specific applications and recommended replacement belt numbers, Visit Gates online catalogue [www.gatescatalogue.com.au](http://www.gatescatalogue.com.au).



### TRUFLEX™ AND POWERATED™ BELT LENGTH FINDER

Improved belt length finder measures FHP belts up to 107" to determine equivalent Truflex™ or PowerRated belt numbers. Part No. 91104.

- Instructions for using finder packed with unit.





### BELT MEASURER

Measures Automotive V-belts and Micro-V® belts. Measures V-belts up to 2540mm in length and Micro-V® belts up to 2720mm in length, also measures the belt width.

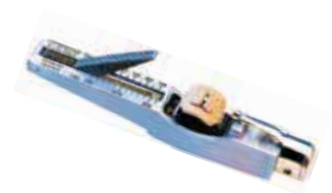
Part No. GVMVBM and 91201 High Cap Belt Measurer.



### KRIKIT™ V-BELT TENSION GAUGE

This easy-to-use gauge is designed for tensioning all automotive V-belts up to, and including, 7/8" top widths. Part No. 91107.

- Scale reads in pounds and kilograms. Measures tension from 30 to 160 lbs., and 15 to 75 kg.
- Die-cast aluminum body, nylon indicator arm and pressure pad.
- Fits in pocket with stainless steel pocket clip.



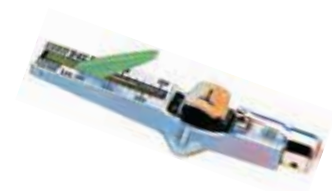
**Note:** Not for use on timing belts.



### KRIKIT™ II (V-RIBBED) BELT TENSION GAUGE

Designed for tensioning V-ribbed belts on passenger cars, light trucks, heavy trucks and buses. Part No. 91132.

- Bright green pressure pad and indicator arm.
- Calibrated to measure tension from 100 to 320 lbs., and 50 to 150 kg.
- Measure belts up to eight ribs in width.



**Note:** Not for use on timing belts.



### ALTERNATOR DECOUPLER PULLEY (ADP) TOOL KIT

This handy tool kit contains all of the tools required for ADP removal and installation. One kit eliminates the need to shop around for hard-to-find tools and reduces service bay downtime that can take a toll on dealer profits. Part No. 91024.

- Kit includes eight tools designed to repair all vehicles that utilise ADPs found on the road today.



PART NO.	DESCRIPTION	PART NO.	DESCRIPTION
91024-1	H22 x 33T	91024-5	1/2" Drive x H10 Adapter
91024-2	H21 x H28	91024-6	1/2" Drive x T50
91024-3	H17 x H19	91024-7	1/2" Drive x S10
91024-4	H10	91024-8	1/2" Drive x H8



  **COOLANT AND BATTERY REFRACTOMETER**

Measures concentration of coolant mixture in engine. Place small sample of coolant on lens, then hold lens up to light source. Light bends through liquid, providing an accurate reading on scale. Part No. 91001.

- Measuring coolant concentrations is essential to cooling system maintenance.
- Most technicians use hydrometers to test coolant concentration via gravity or floating ball scales.
- Hydrometers must be temperature corrected, and may give false readings when testing new, propylene-based coolants.
- Gates refractometer automatically corrects for temperature on both types of coolant (ethylene and propylene glycol) while measuring battery charge levels.



  **POWERGRIP™ SB CLAMP REMOVAL TOOL**

Offers easiest method for removing Gates revolutionary shrink-to-fit PowerGrip™ SB clamps. Part No. 91215.

- Quickly removes clamps without damaging hose.



  **HOSE CUTTERS (HAND-HELD) AND REPLACEMENT BLADES**

Makes clean cuts with no ragged edges. Cuts most non-metal reinforced rubber hose. Excellent for cutting textile-reinforced hose.

- Blade closes into handle for safety.
- Cutter and blades packaged individually on shrink-wrapped cards.
- Lightweight with nylon handles.



HOSE CUTTER	DESCRIPTION	REPLACEMENT BLADE	CUTS TO HOSE I.D. (IN.)
91143	Large I.D. Hose Cutter	91144	3
91153	Small I.D. Hose Cutter	91154	1 1/2



  **POWERCLEAN™ FLUSH TOOL**

Cooling systems can be difficult to flush completely due to accumulated debris. Inadequate flushing can ruin a newly installed water pump and result in warranty problems and frustrated customers. Make sure you perform a complete cooling system flush by using clean water and compressed air. The PowerClean Flush Tool “water hammers” accumulated sludge and scale deposits without the use of harsh chemicals or solvents. It cleans radiators, heat exchangers, hoses and engine blocks more effectively than conventional flushes, maintains system integrity and ensures warranty coverage on replacement parts, including water pumps. The PowerClean Flush Tool patented process uses fixed dimensional control of the air and liquid flow paths. The process allows air to pressurise the cleaning fluid to scrub deep into corners and crevices, eliminating trapped debris.



- Pulsating gun assembly with pre-set regulator.
- Water line backflow preventer.
- Large rubber tip for radiator necks and direct flushing of the engine block.
- Small rubber tip on whip hose for direct access to heater core tube stubs.
- 5/8” and 3/4” heater hose barbs for flushing heater cores or engine blocks.
- Durable protective storage case with room for additional items. Part No. 91002.

PART NO.	DESCRIPTION
91002-1	Storage Case W/Foam Inserts
91002-2	Patented Flushing Gun
91002-3	Small Tip for Heater Core
91002-4	Large Tip for Radiators
91002-5	5/8” Heater Hose Connector
91002-6	3/4” Heater Hose Connector
91002-7	Whip Hose W/Quick Couplers
91002-8	Supply Hose Backflow Preventer
91002-9	4 1/2” Large Tip for Trucks





**POWER CLEAN™ ACCESSORY - HEAVY DUTY CONE**

The larger heavy-duty cone accessory piece is recommended for use with the larger porting of heavy-duty cooling systems. This tool is also highly effective on external cleaning of the heat exchanger “stacks”, which do quickly become heavily contaminated in off-road environments.

- 4.5” max O.D.
- Suitable applications include truck, bus, ag, mining, marine and construction equipment.
- The 4.5” cone is used by inserting the standard radiator cone (included in Part # 91002) into the back of the 4.5” cone.
- The 4.5” cone can also be used by installing the 3/4 heater hose barb adapter (included in Part # 91002) into the back of the 4.5” cone.



Part No. 91002-9

**SURELOK™ QUICK-RELEASE PLIERS**

SureLok push-to-connect couplings are the easiest and quickest couplings to install. But disconnecting them can be another matter. Placement near obstructions, as well as age and road debris, can adversely affect your ability to quickly disconnect SureLok couplings. Many times getting hands into an area to remove a coupling is almost impossible. SureLok pliers allow for the quick removal of SureLok couplings from the tubing with just one hand. To help get into those tight spaces, SureLok pliers offer two different heads: one straight and one at a 90° angle. They also come in two sizes: small for tubing from 1/8” to 3/8”; and large for tubing from 3/8” to 3/4”.



**SureLok Plier Single Packs:**

- Small Angle:** Part No. 91021
- Small Straight:** Part No. 91023
- Large Angle:** Part No. 91020
- Large Straight:** Part No. 91022



**SureLok Plier Four-Pack:** Part No. 91017

**SONIC TENSION METER**

The proper way to check belt tension is to use a tension tester. The Sonic Tension Meter measures the vibration of the belt span and instantly converts the vibration frequency into belt static tension. This is the span vibration method of tensioning belts. Part No. 7420-0508.





## COOLING SYSTEM PRESSURE TESTER

Contains all the components needed to check cooling systems and radiator caps.

- Lightweight, impact resistant analyser.
- Pressure release button on easy to read gauge allows for safe venting of system during testing. This is a precision instrument designed to locate leaks and pressure cooling system problems.
- The gauge includes cap testing, pressure ranges 17-19lbs, 20lbs and 28lbs.
- The head also includes a pressure release bar to allow the release of pressure build up before moving from neck.
- Packaging: Individually boxed.
- Part No. 12270.



## DRIVEALIGN™ LASER TOOL

Designed to detect misalignment in accessory drive systems, the two-piece kit contains a laser tool and a target piece, both of which are anodised red for high visibility in dark engine compartments. The laser beam itself is a large vertical line, and when coupled with the precisely etched groove in the target piece, can be used to easily identify misaligned pulleys and components. The tool works on automotive serpentine belt drives with 4 ribs or more.

- Laser type: 650nm visible laser diode.
- Operating time: 20 hours of continuous service.
- Battery type: replaceable lithium battery.
- Specially designed magnetic feet to sit perfectly in K-section Micro-V pulleys.
- Neatly packaged in a blow-molded plastic case for durability during handling and storage.
- Part No. 91075









## NOTES

A series of horizontal dotted lines providing space for handwritten notes.



HOME

GATES AUSTRALIA

NEW PRODUCTS

WHERE TO BUY

CONTACT US

# CATALOGUE SEARCH

FIND PARTS FOR YOUR VEHICLE

SEARCH MAKE, MODEL OR PART NUMBER...

## 3 WAYS TO SEARCH



### Catalogue Search

Easily search the Gates automotive catalogue to find quality aftermarket replacement parts.



### Cross Reference

Enter an Original Equipment or competitor's part number to find the matching Gates part number.





LETTER



Parts Guide

number to find applications that use that part number.



**DRIVEN BY POSSIBILITY™**



FOLLOW US:  
GATES AUSTRALIA



**DRIVEN BY POSSIBILITY™**

---

**GATES AUSTRALIA PTY LTD**

1-15 Hydrive Close, Dandenong South, Victoria, 3175  
PH: +61 3 9797 9666 FAX: +61 3 9797 9600

**GATESAUSTRALIA.COM.AU**

FOLLOW: GATES AUSTRALIA

